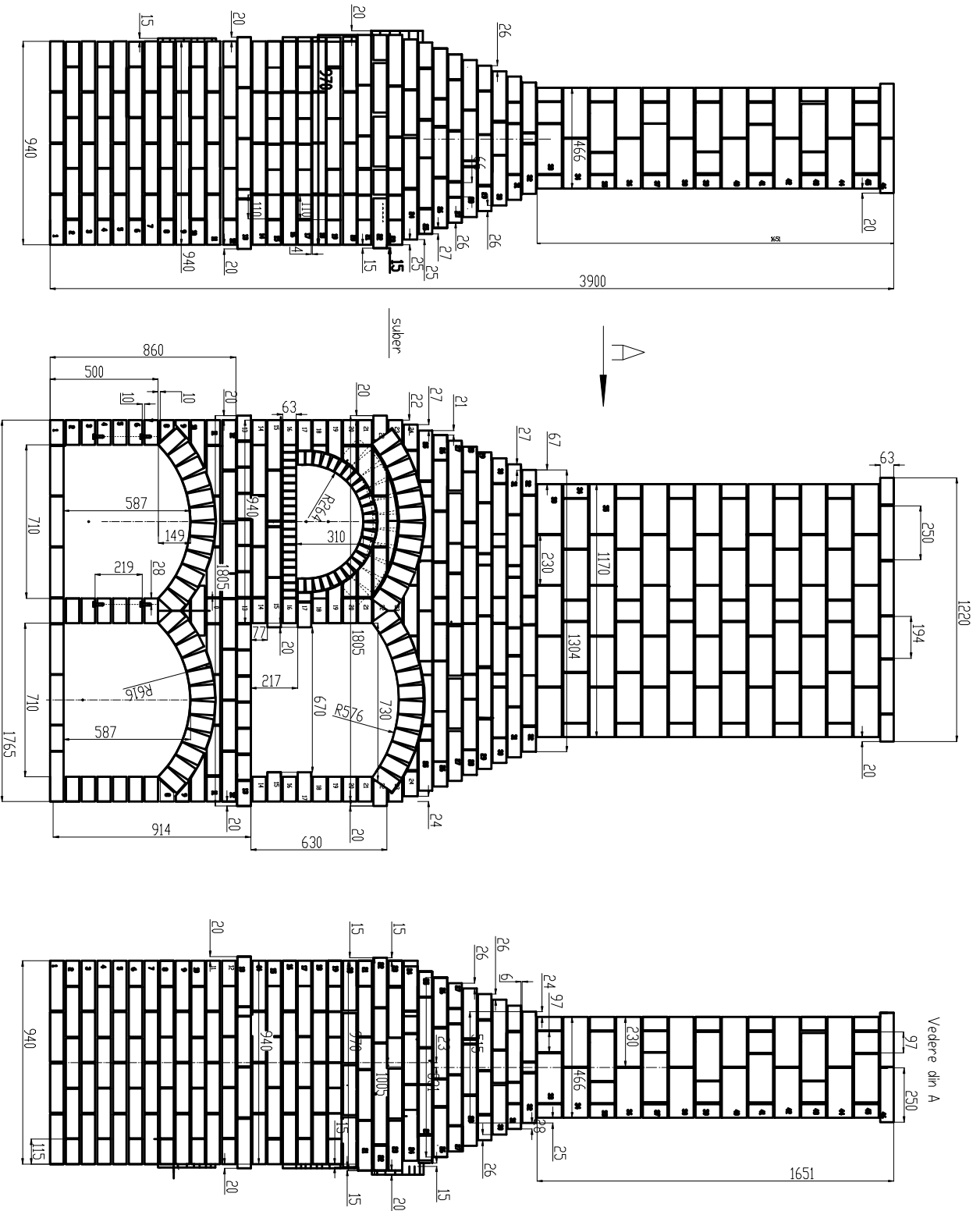
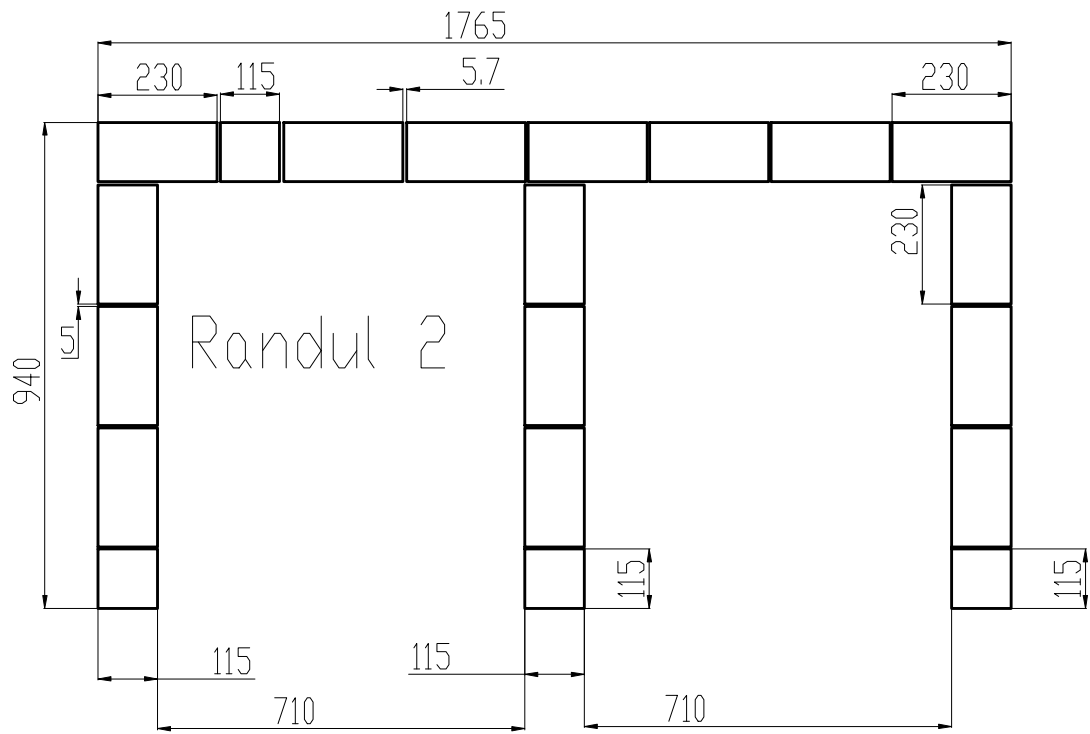


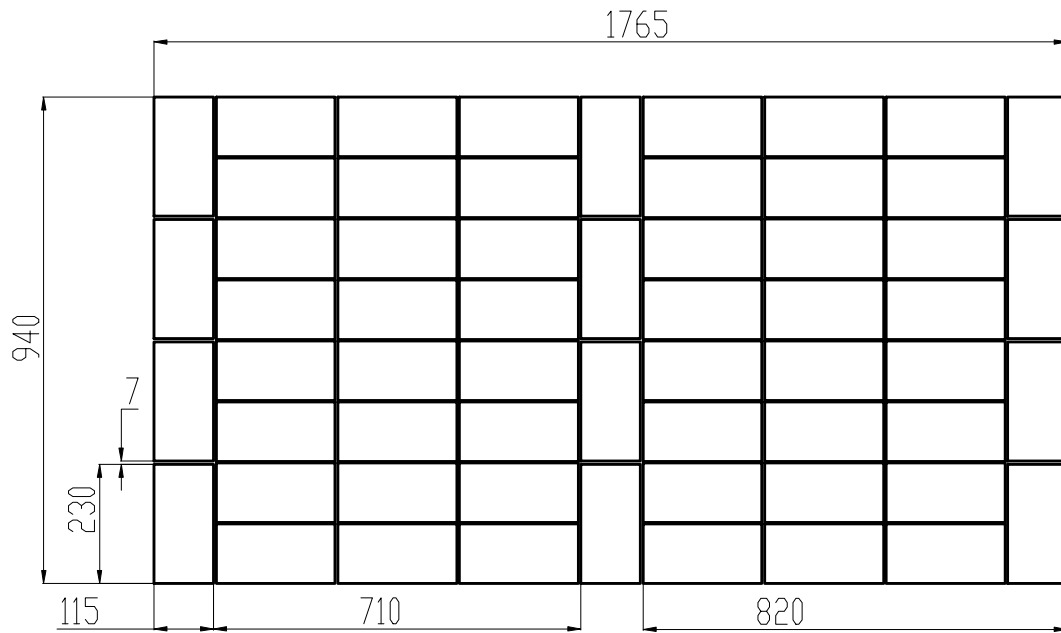
GRILL Varianta 1 Cuptor +grill



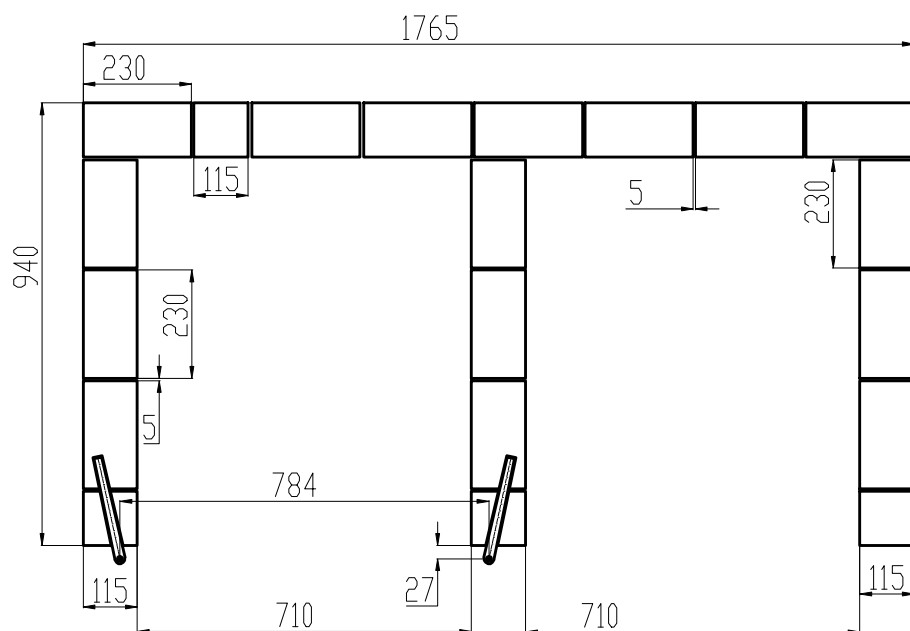
Nota: Deserul este exclusiv de zădărie și nu cuprinde usa de închidere de sub cuptorul de pizza.



Randul 1

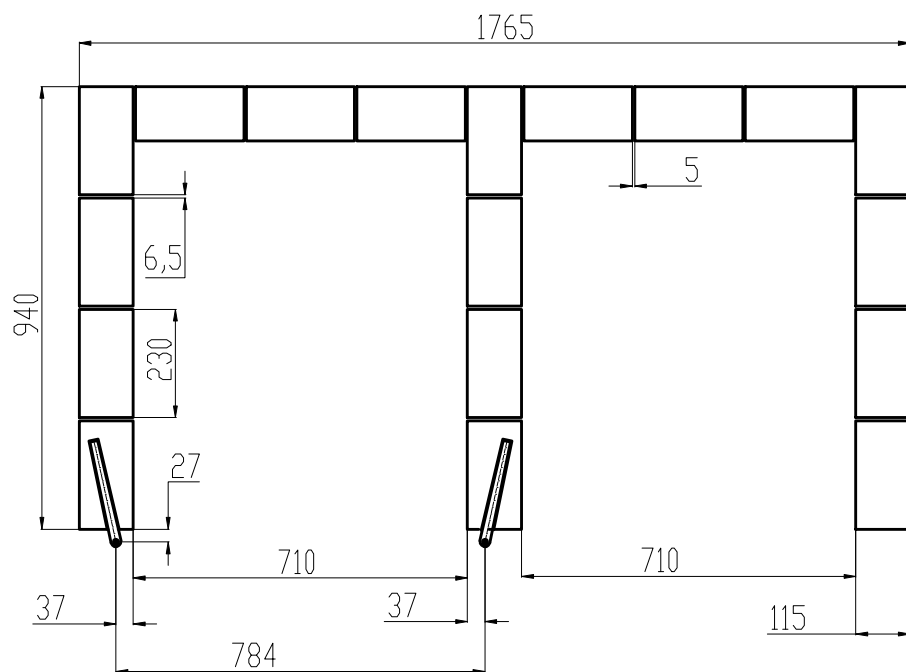


Randul 4 si 6

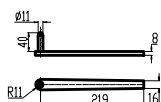


ATENTIE: Balamalele se fixeaza numai la randul 6 pe linie cu cele de la randul 3.

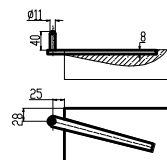
Randul 3



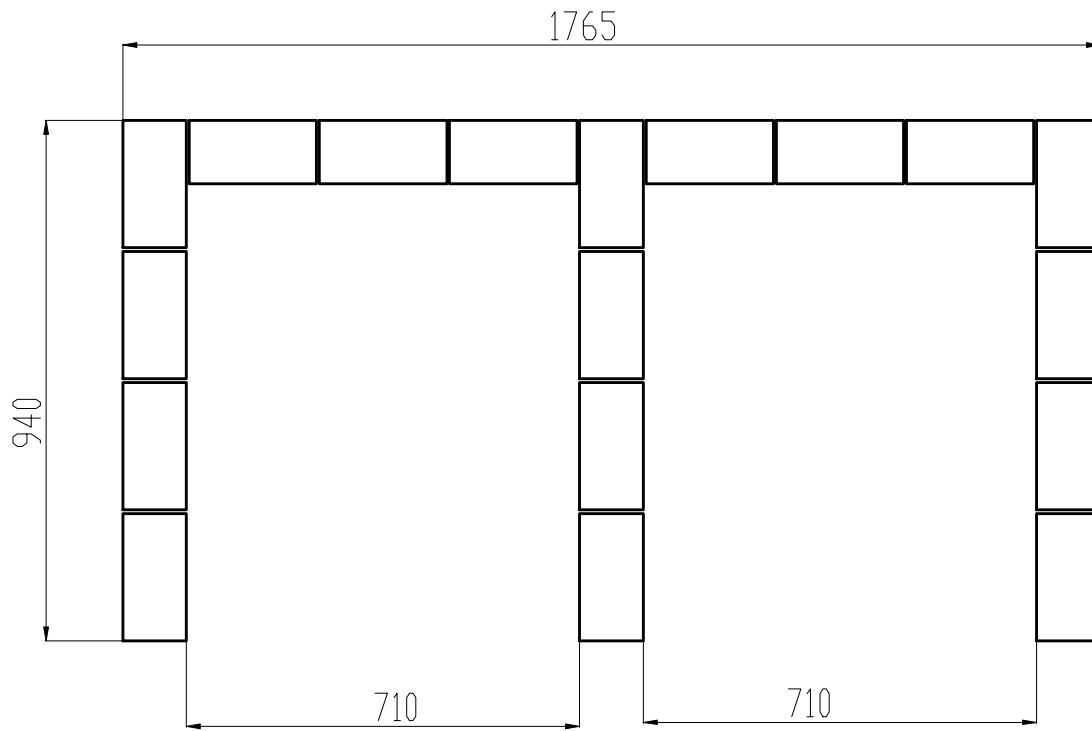
Balamale "tata" Necesari 4 buc.



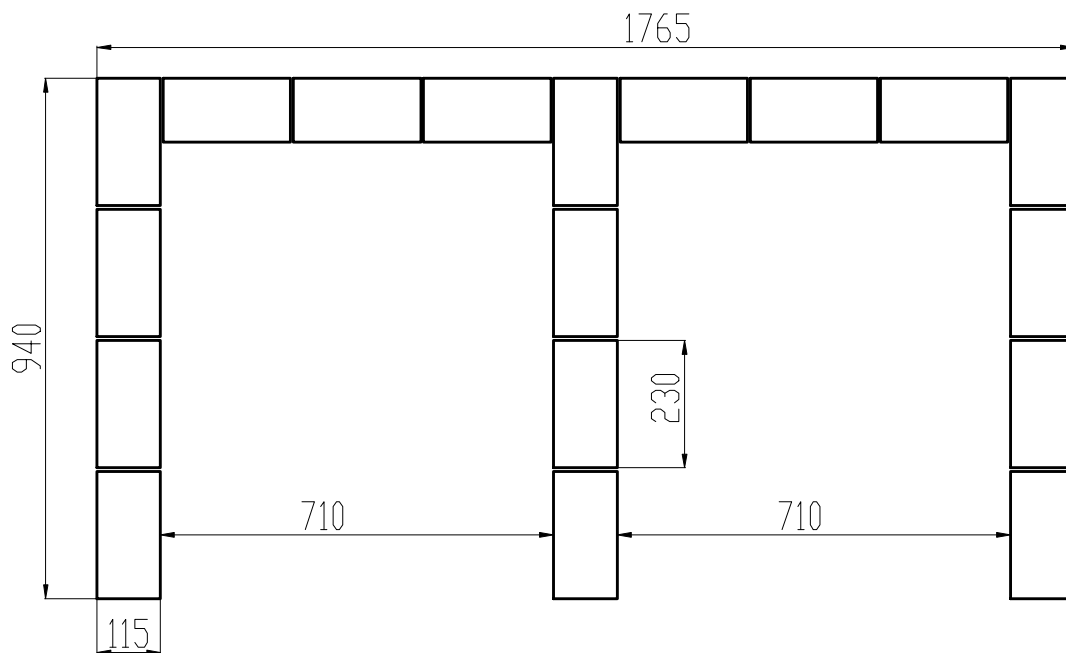
Detaliu montaj balamale



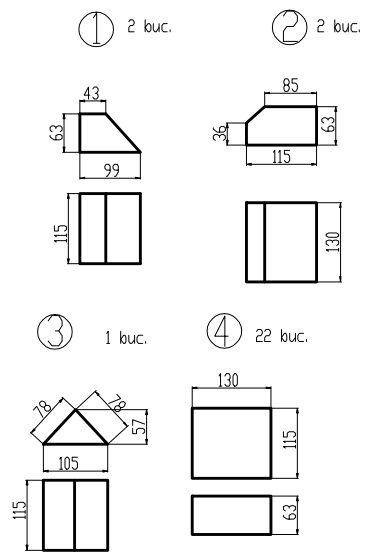
Randul 7 (idem 5)



Randul 5 (idem 3 fara balamale)

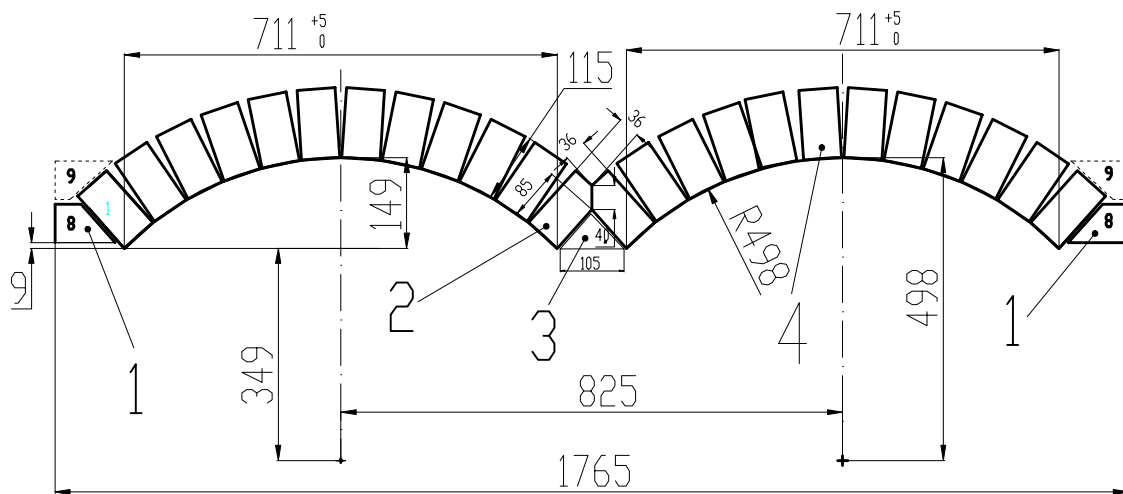


Caramizi taiate R8



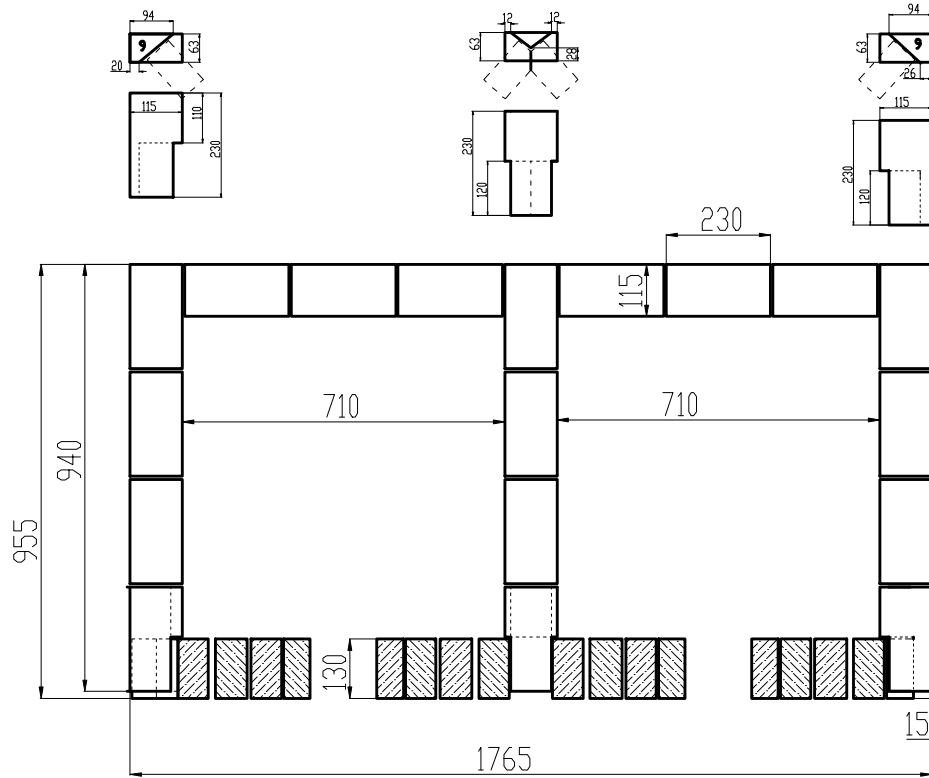
Constructia arcadelor la R8

Vedere din A

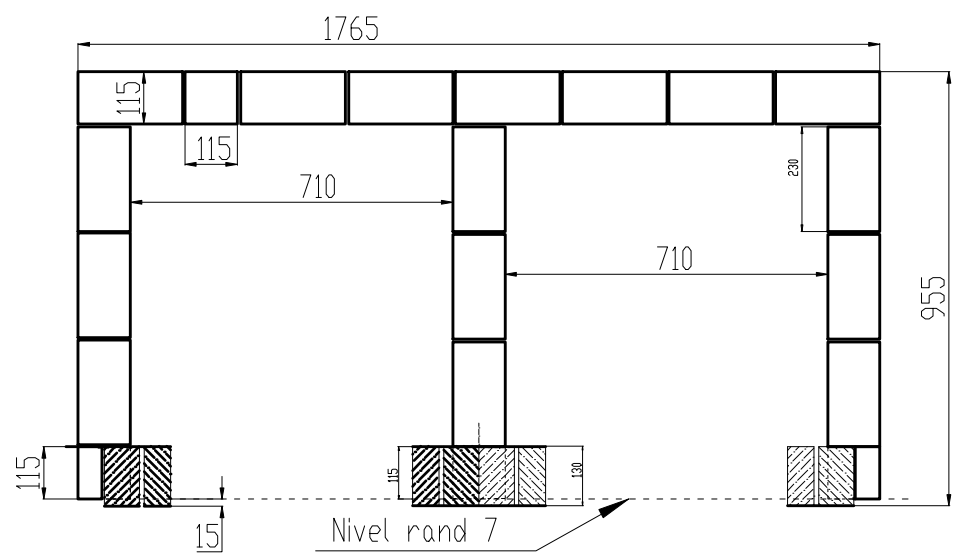


Randul 9

Caramizile prelucrate la R9



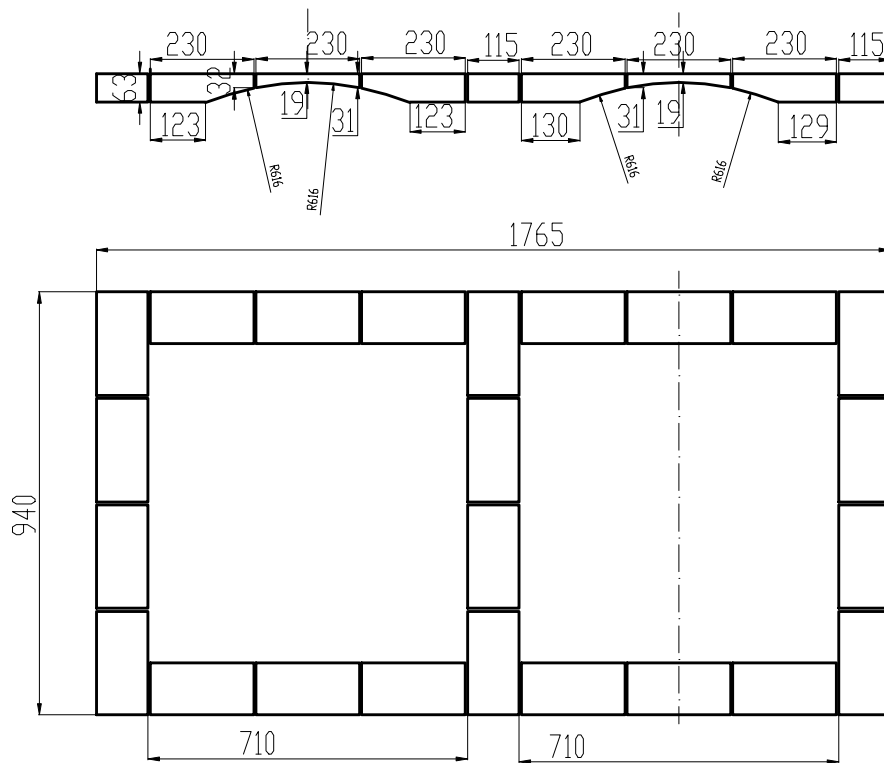
Randul 8



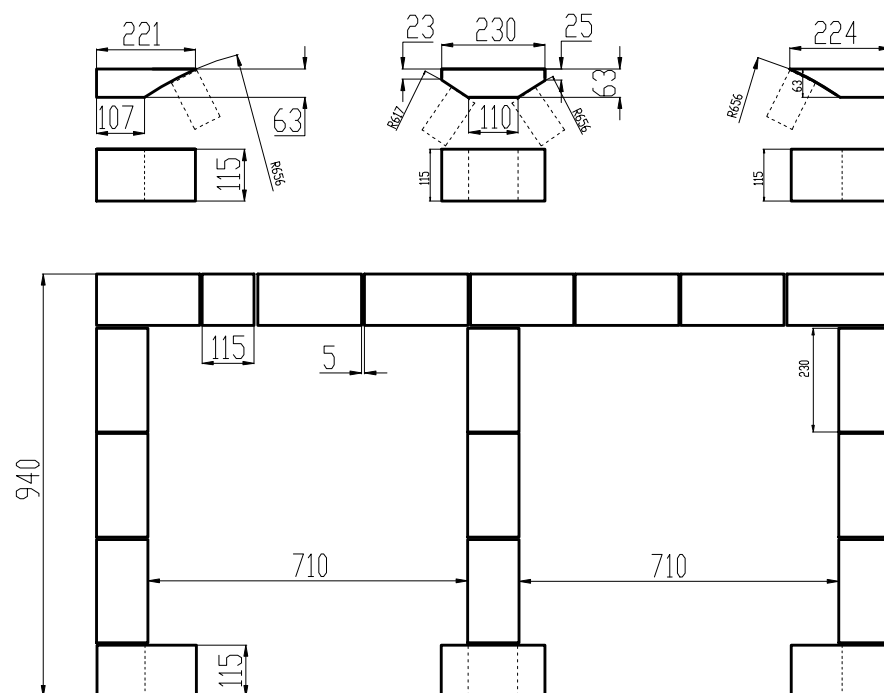
Nivel rand 7



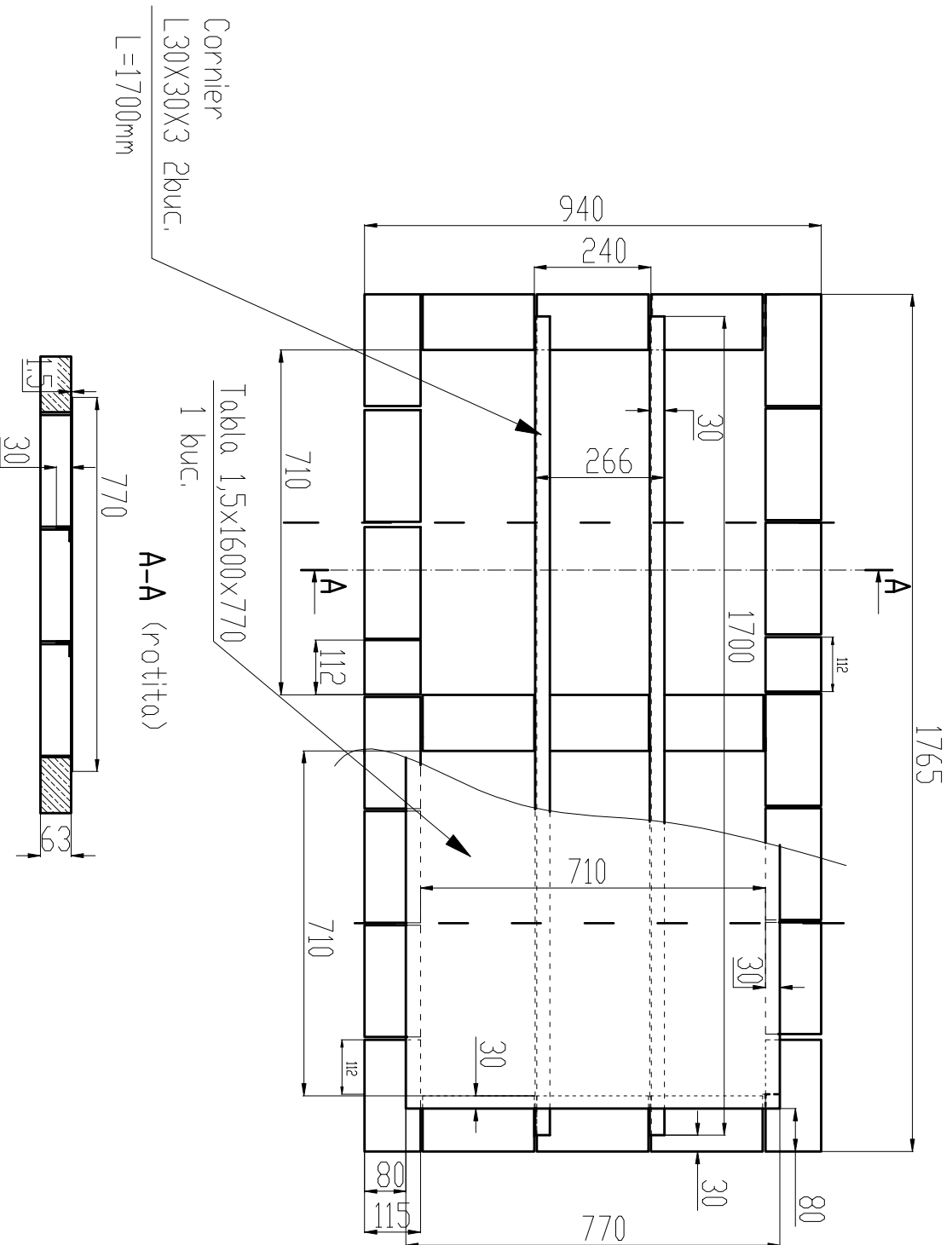
Randul 11



Randul 10 (fara arcade)



Randul 12

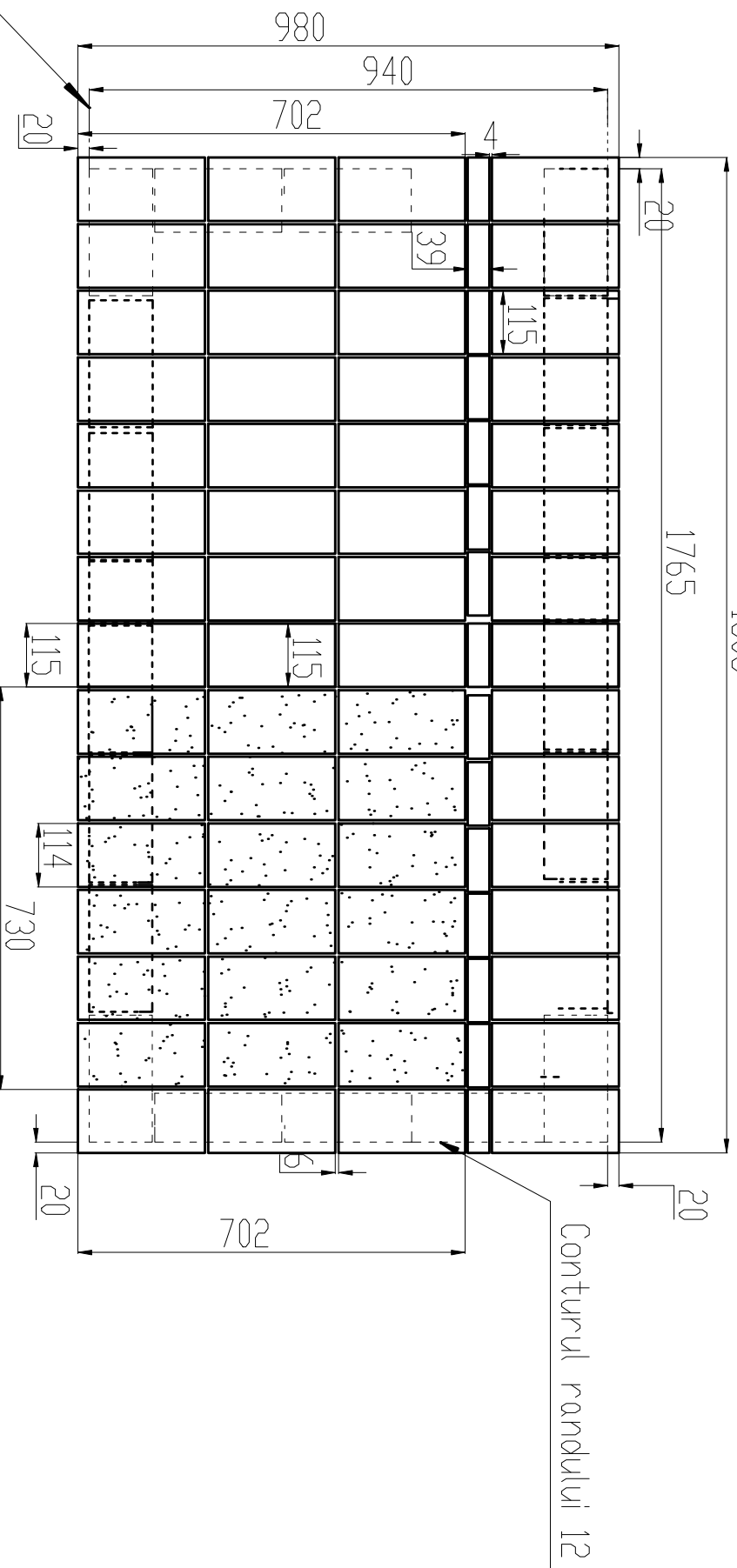


Nota: Cornierul va fi la nivelul superior al caramizilor peste care se pune tabla.

Randul 13

1805

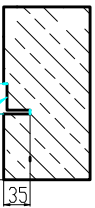
1765



NOTA: Caramizile din zona 730x702 sunt din samota (R 28 AS - 230x114x64)

Conturul randului 12

A-A (rotita)

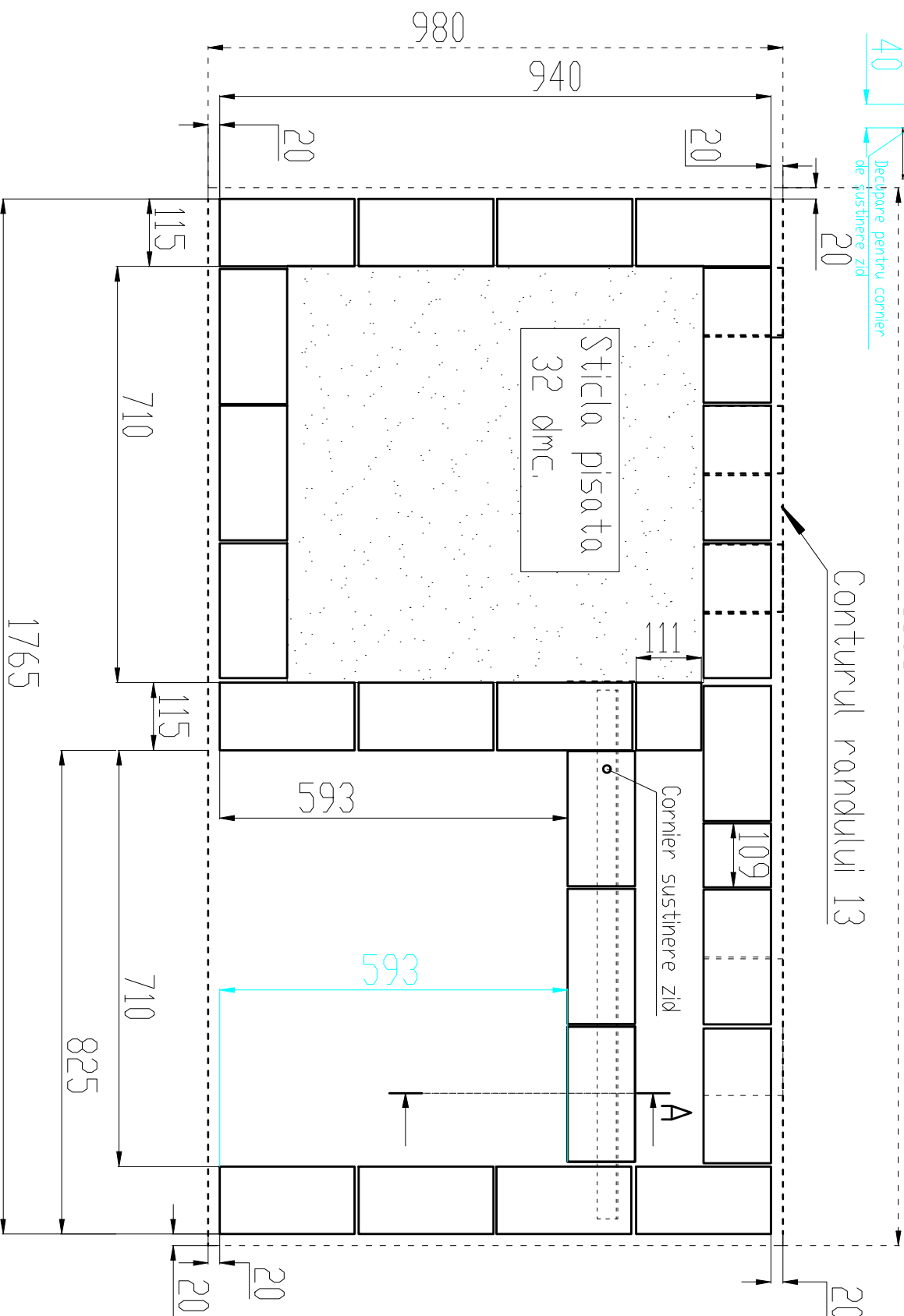


Decupare pentru cornier
de susținere zid

Randul 14

1805

Conturul randului 13



Cornier susținere zid

Sticla pisata
32 dmc.

593

115

710

115

710

825

1765

980

940

20

20

20

20

20

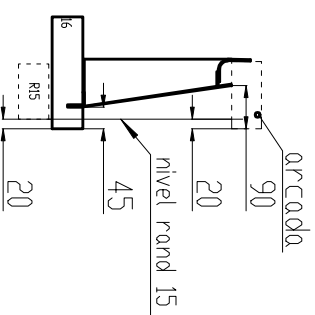
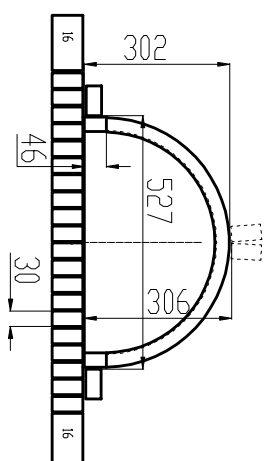
20

109

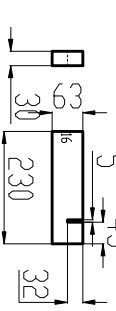
593

A

Detaliu montaj rama usa
cuptor pizza

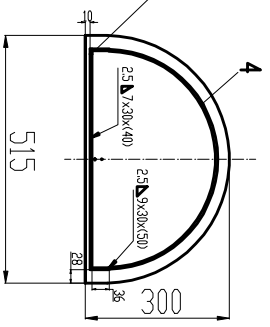
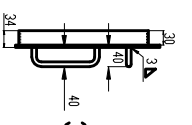
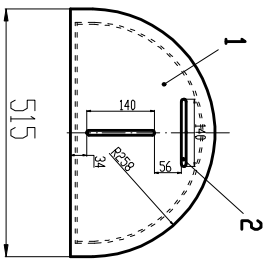


Taiere caramizi sub
rama usii 20 buc.

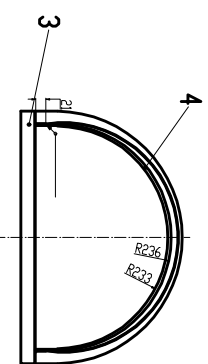
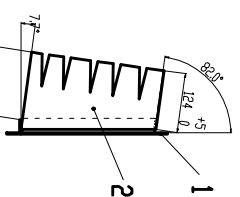
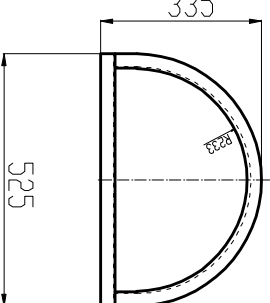


Se taie din caramida R-28 AS, dar
numai din zona ranei (cota 525)

ANSAMBLU USA

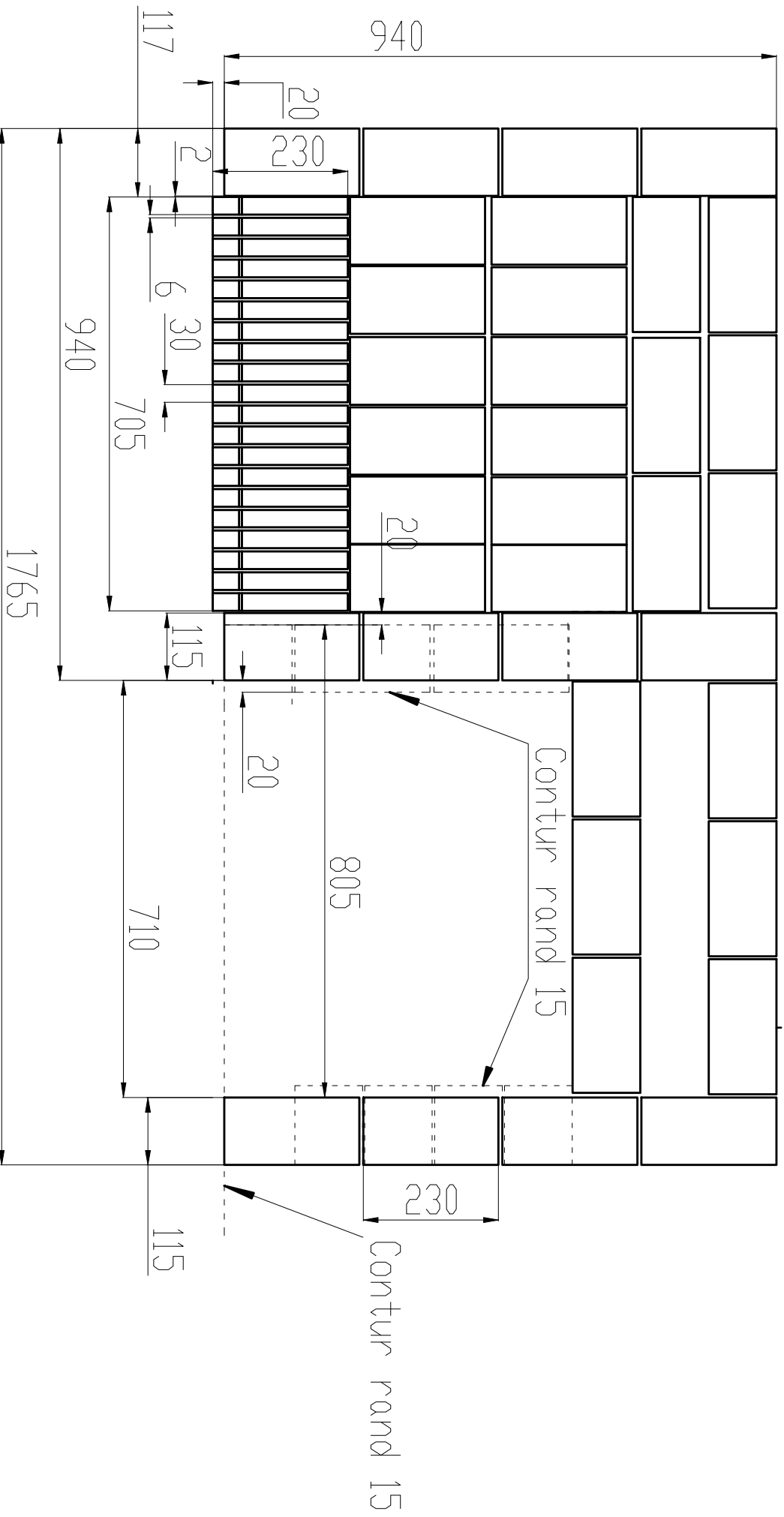


ANSAMBLU RAMA



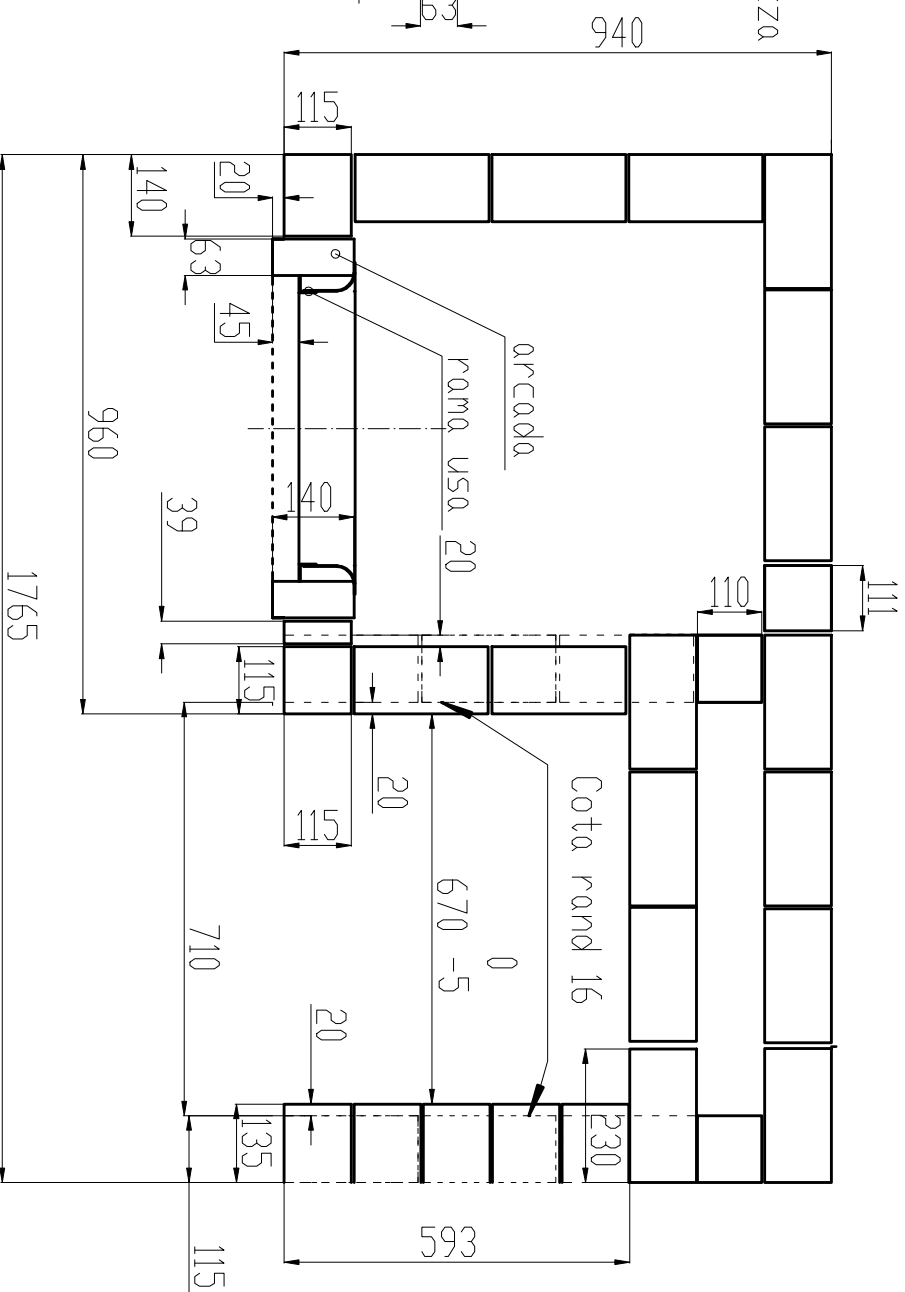
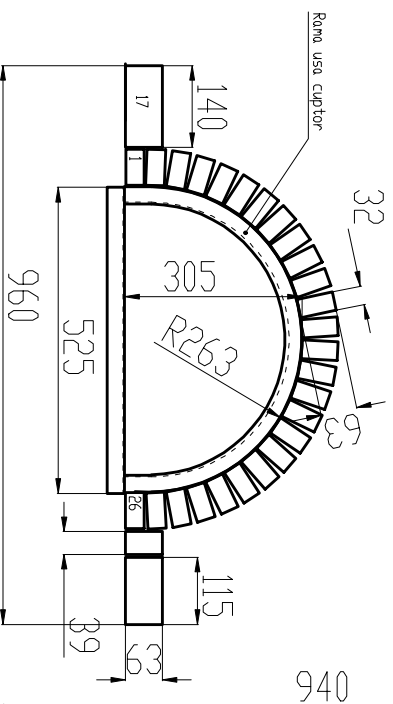
Nota: Arcada se construiește după usa,
aceasta montată

RANDUUL 16

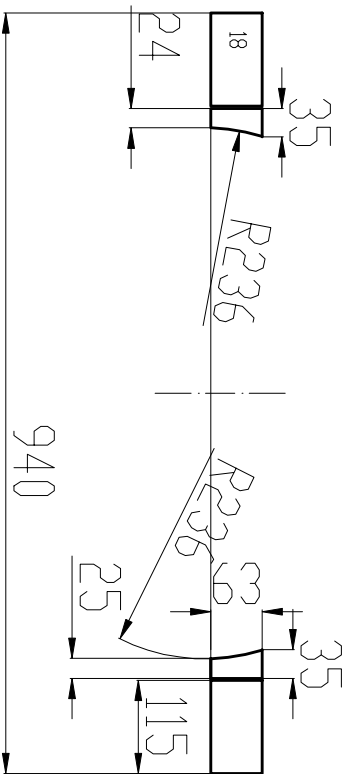


Randul 17

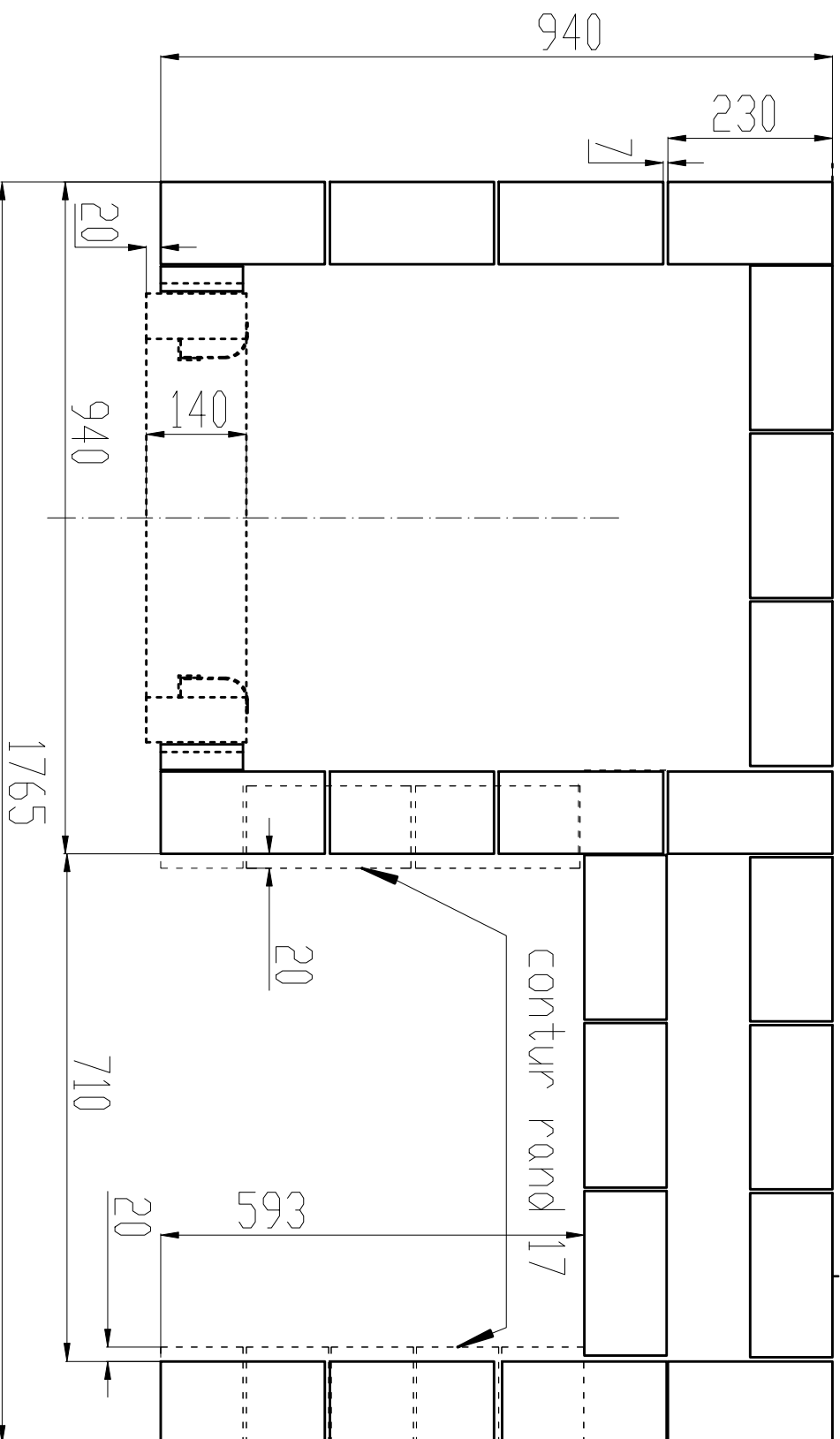
Construcția arcadei cuptor pizza



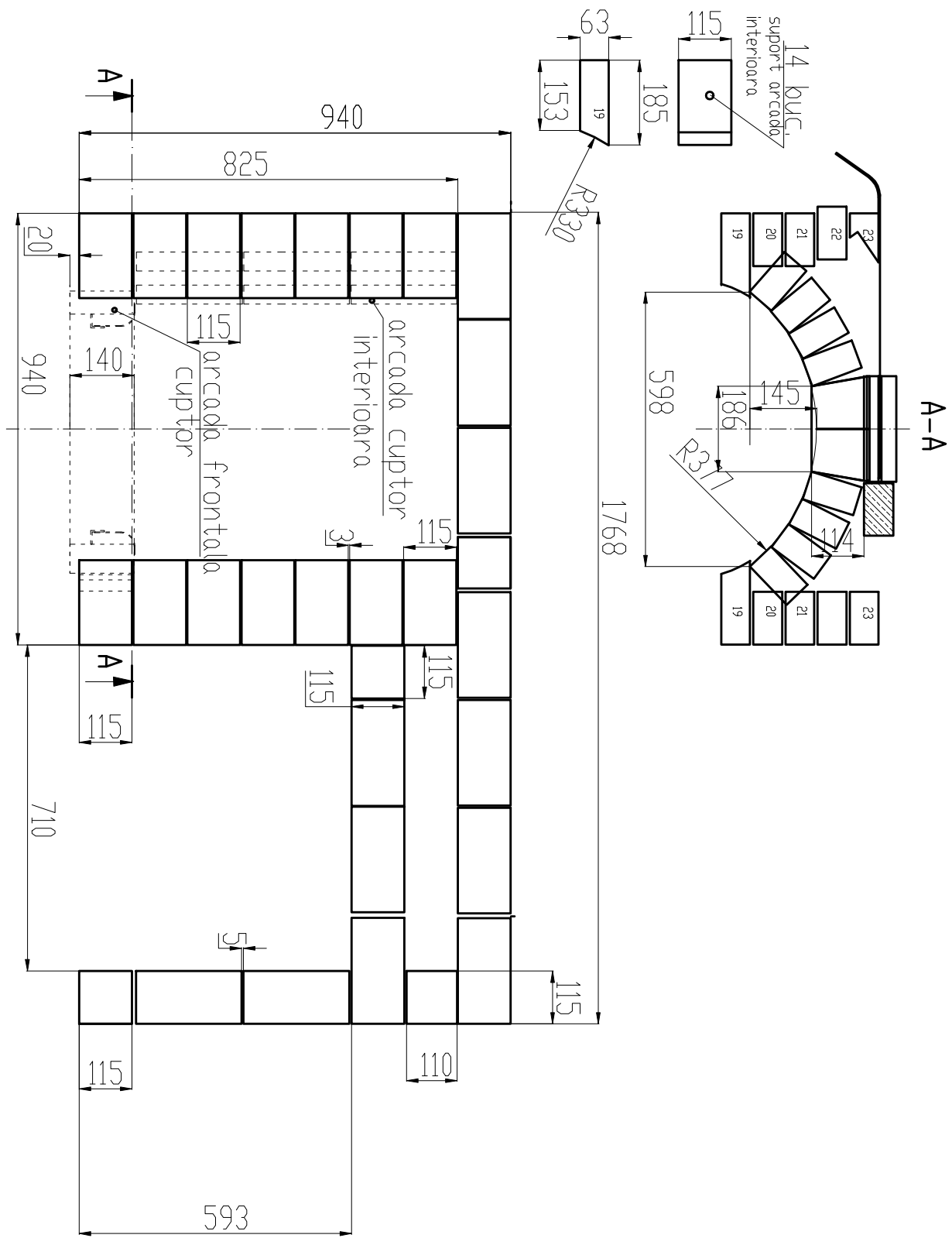
17	P63 (230x115x63)	22	4	24
Arcada -	R32-28 AS (230x114x32)	26 buc.		26



RANDUL 18



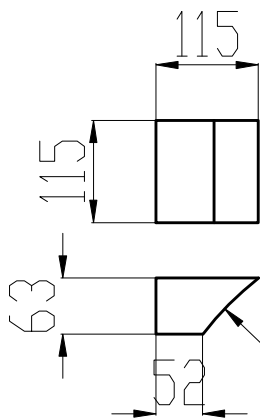
Randul 19



Randul 20 (reperere)

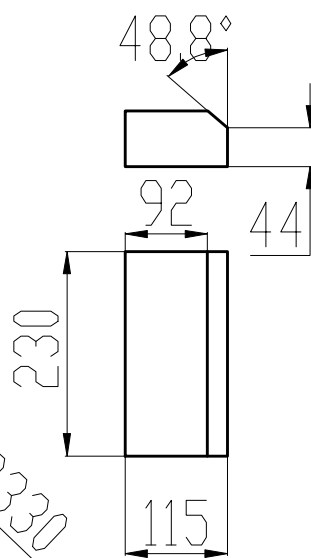
①

2 buc



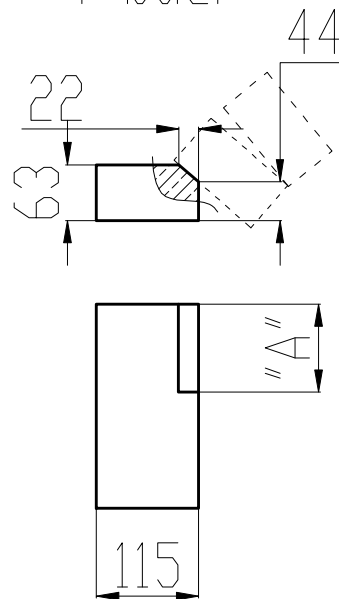
②

4 buc.



③

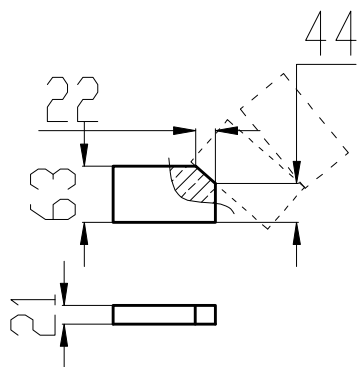
4 buc.



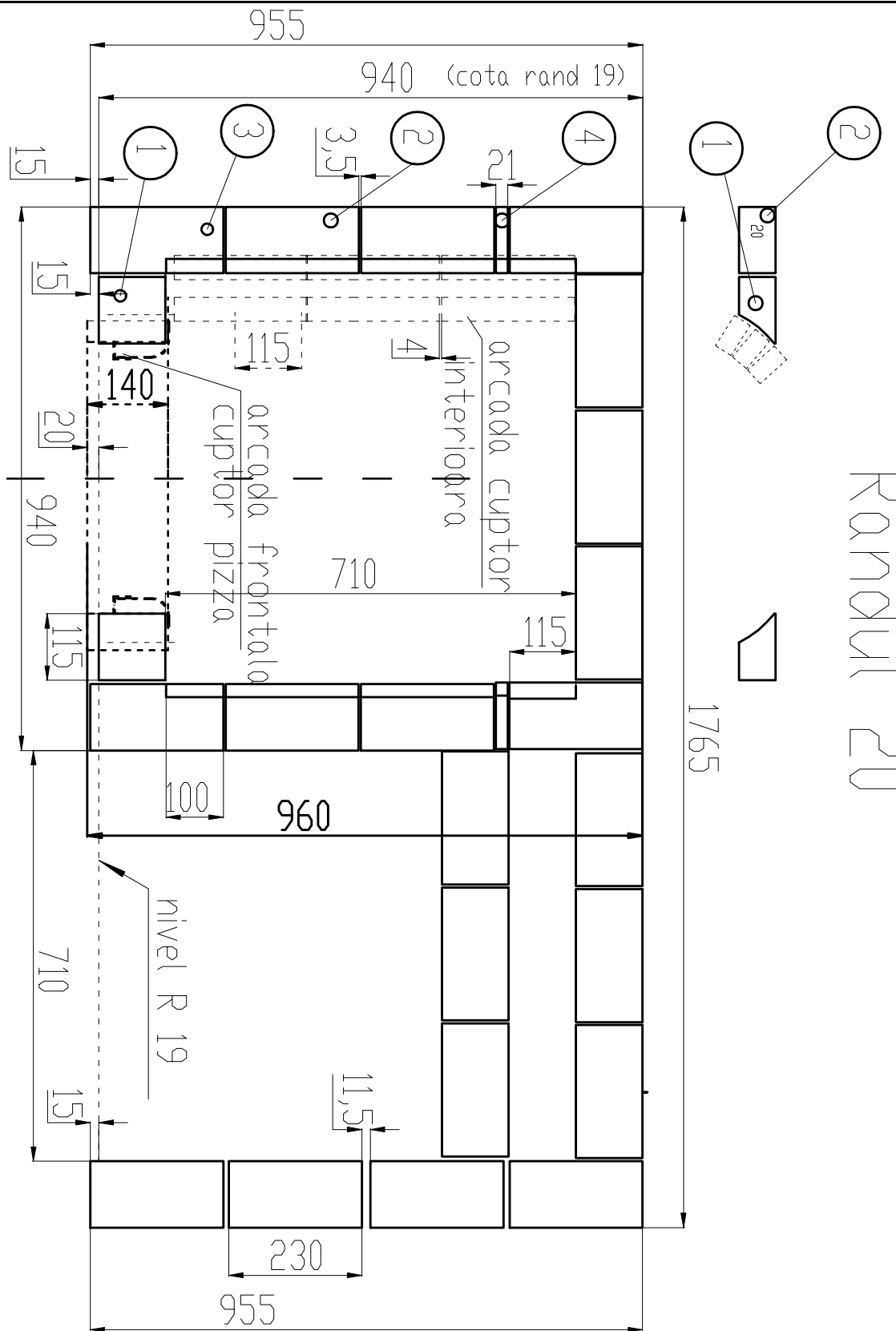
A=100-1buc. st-ga + 1buc.d-ta
A=115-1buc. st-ga + 1buc. d-ta

④

1buc. d-ta+1buc. st-ga

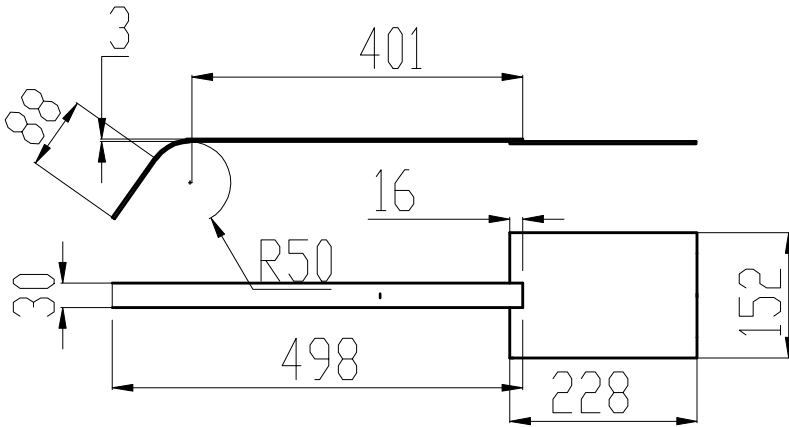


RANDUI 20

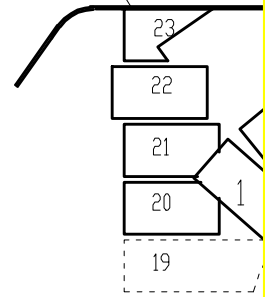


Constructia arcadei in Randul 20

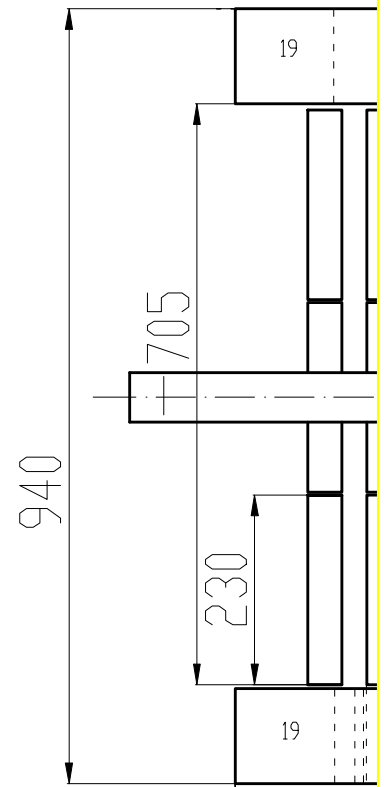
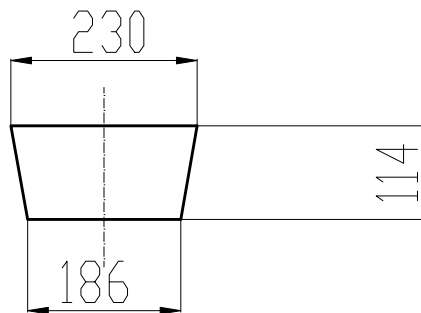
Detaliu suber



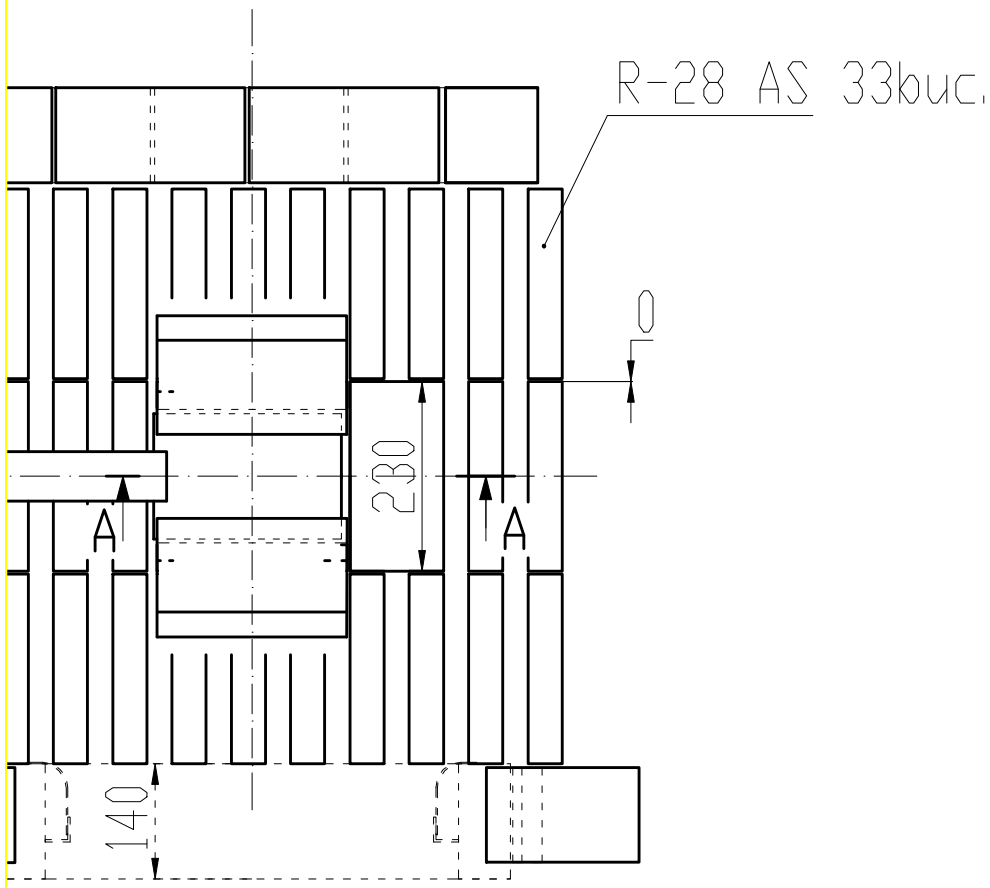
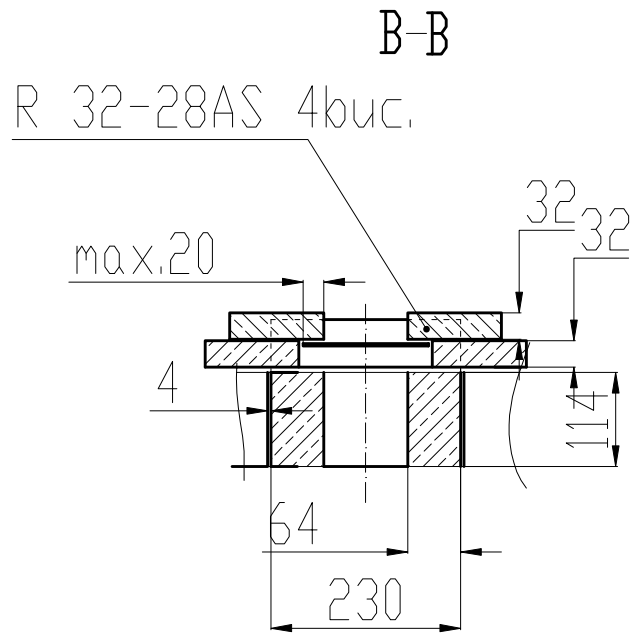
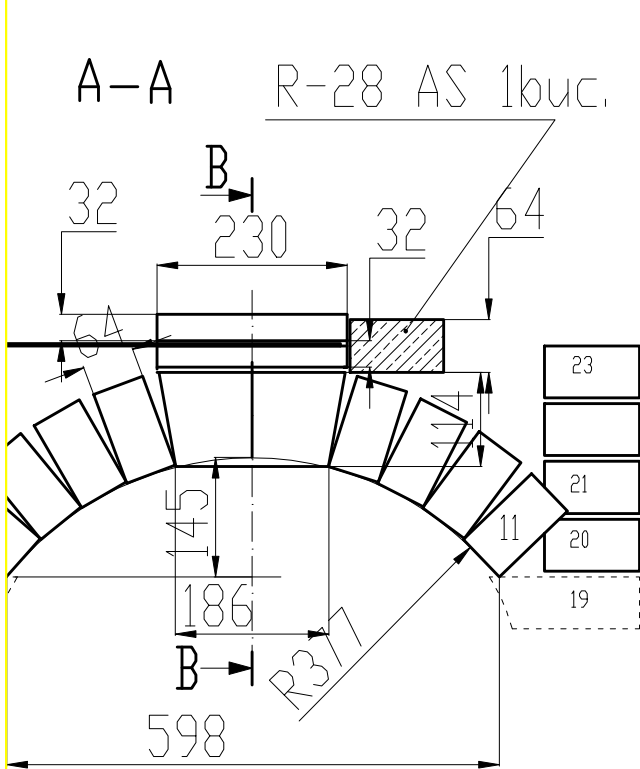
suber



Caramida R-28 AS 2buc.

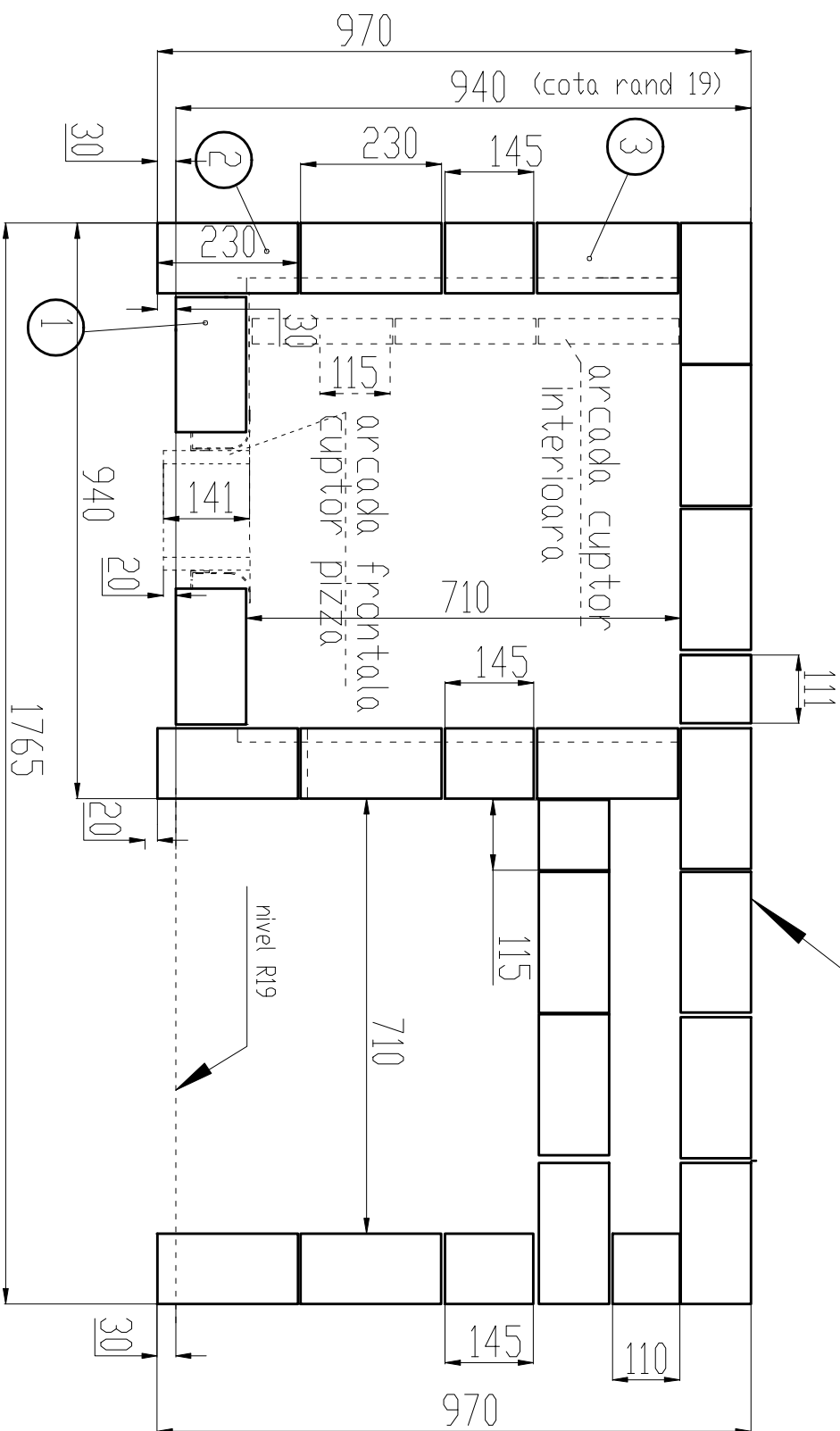
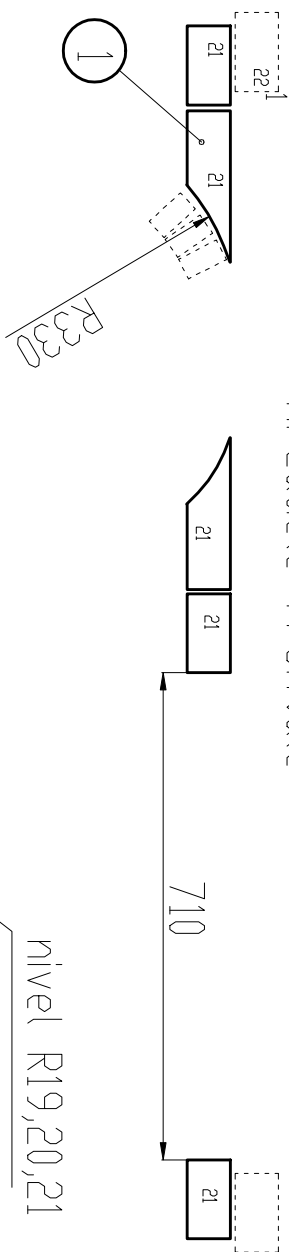


terioare si a suberului



Randul 21

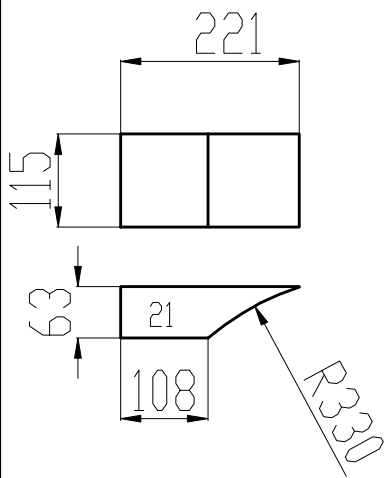
Arcadele frontale



Randul 21-1

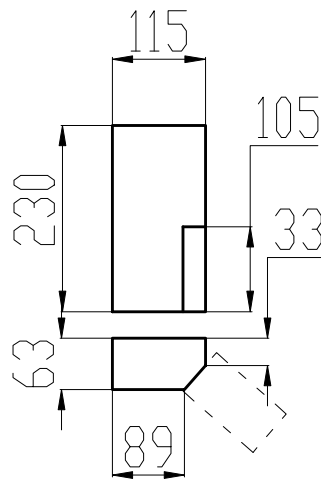
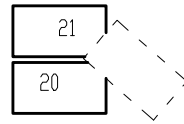
①

2 buc.

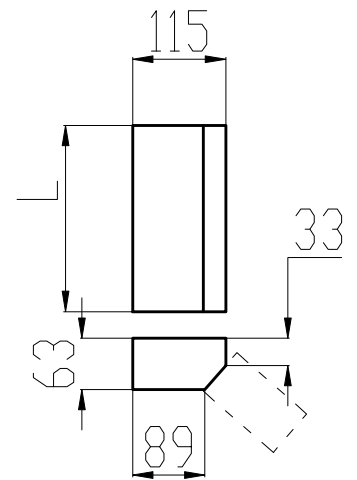


②

2 buc. in oglinda



③



L=230 -6buc.

L=145 -2buc.

21

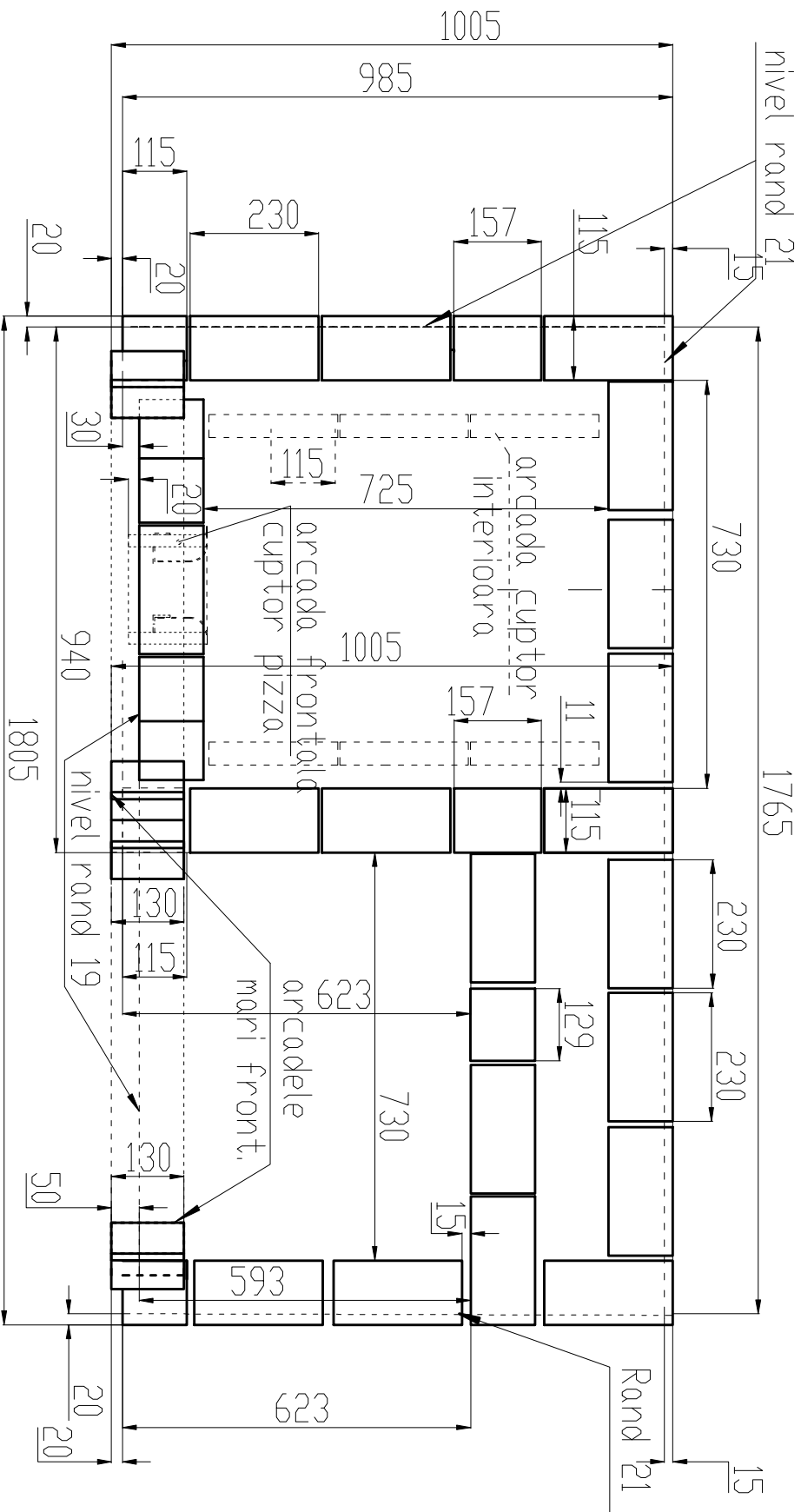
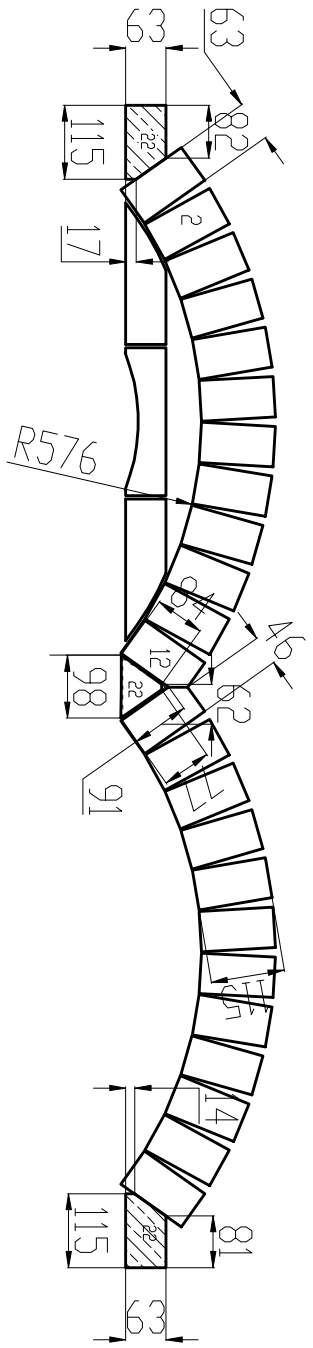
P63 (230x115x63)

24

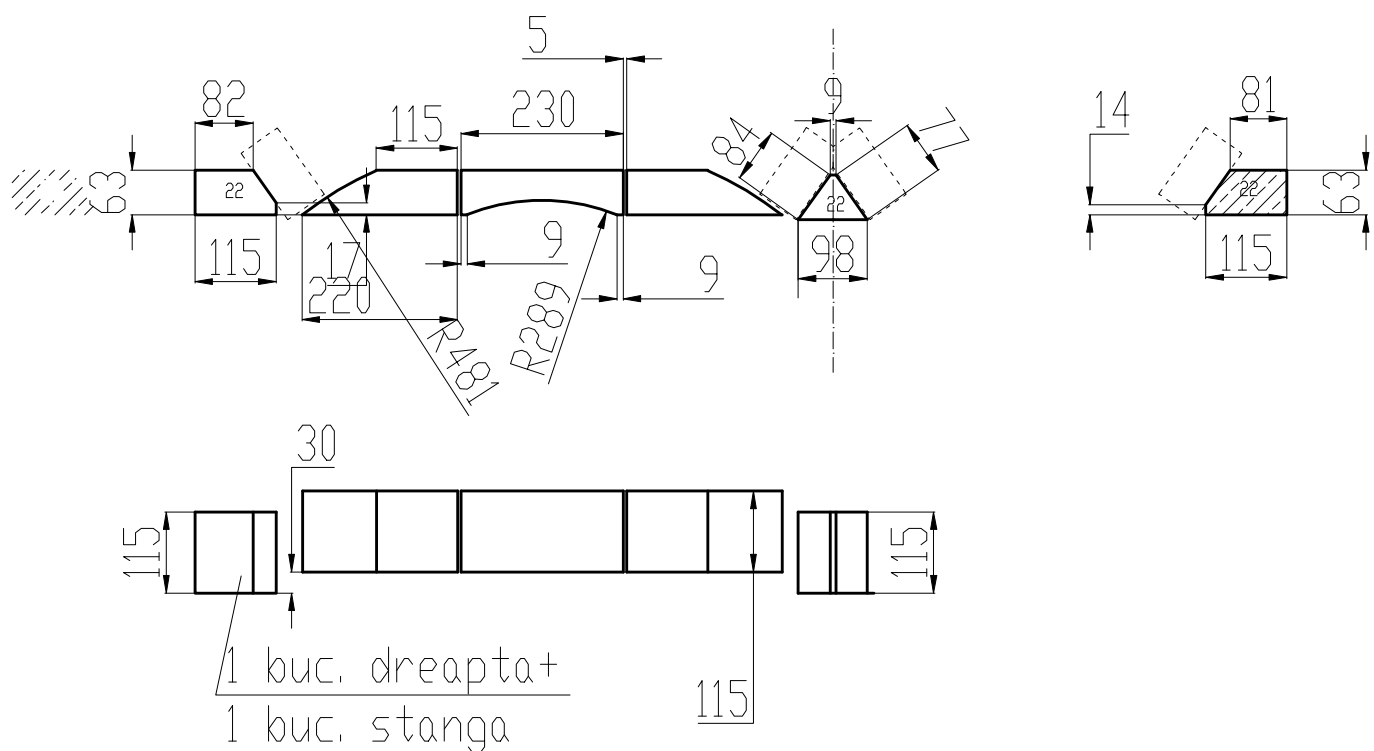
4

26

RANDUL 22

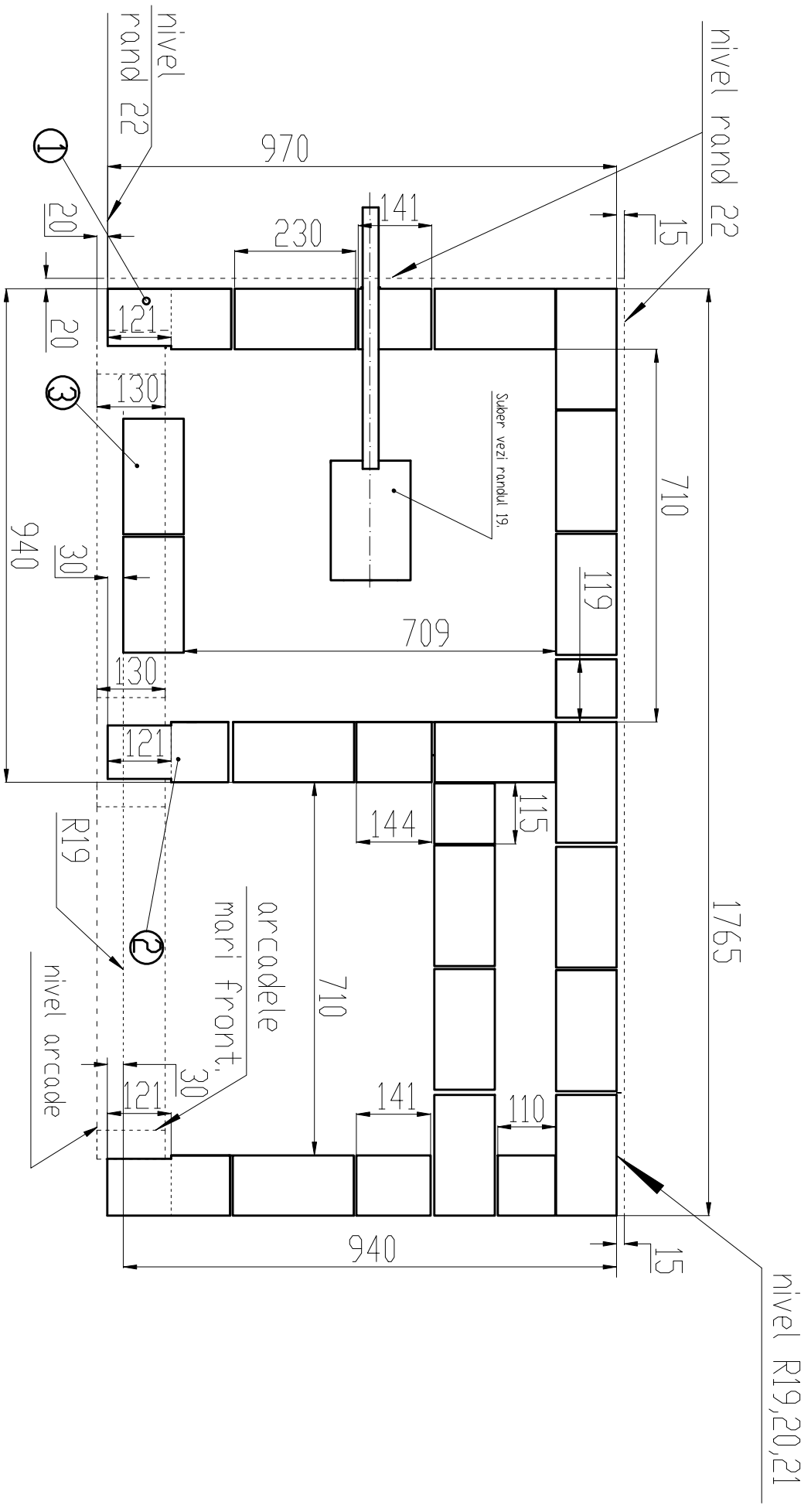
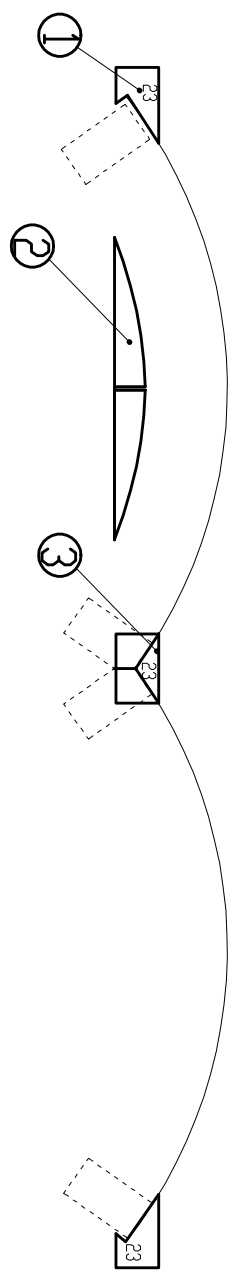


Randul 22-1



22	P63 (230x115x63)	24	3	25.5
	Arcade frontale	P63 (230x115x63)	24	24

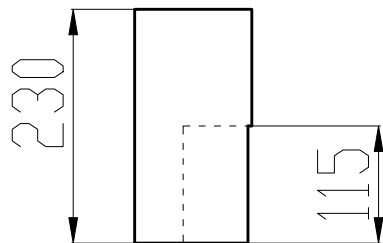
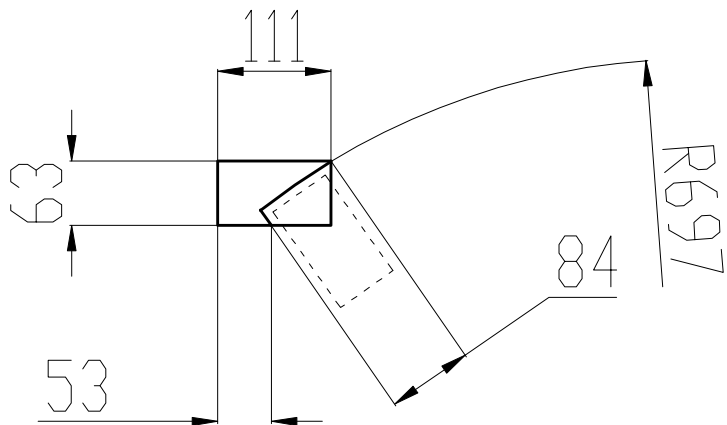
Randul 23



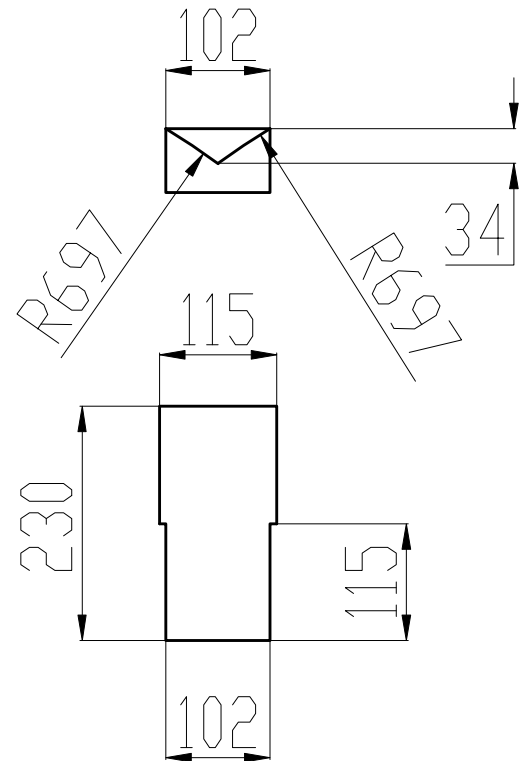
Randul 23-1

①

1 buc. d-ta+1 buc. st-ga

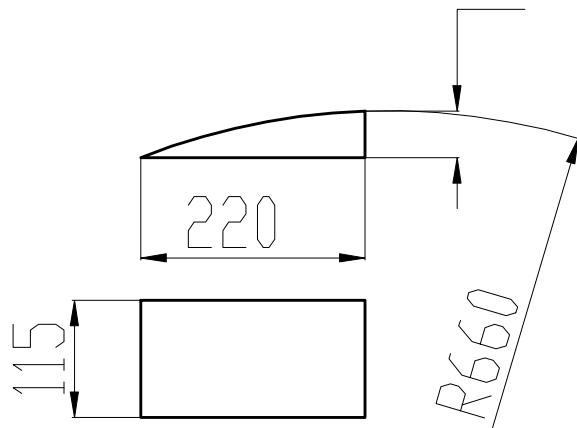


③



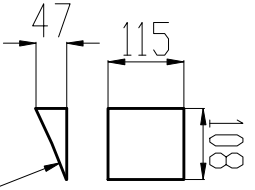
②

2 buc. 46

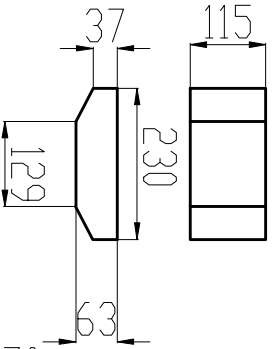


Randul 24

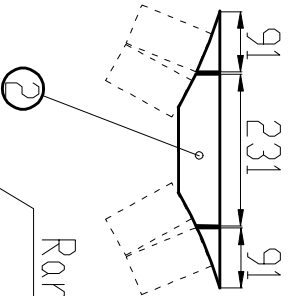
①
4 buc.



②
1 buc.

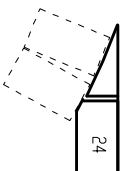


1720



Randul 23

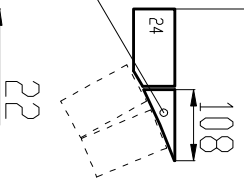
②



24

R697
970
925
25

①



22

206
230
230

①

40

39

1720

②

10

115

Randul 23

130

50

230
230

87

arcadele
mari front.

202

23

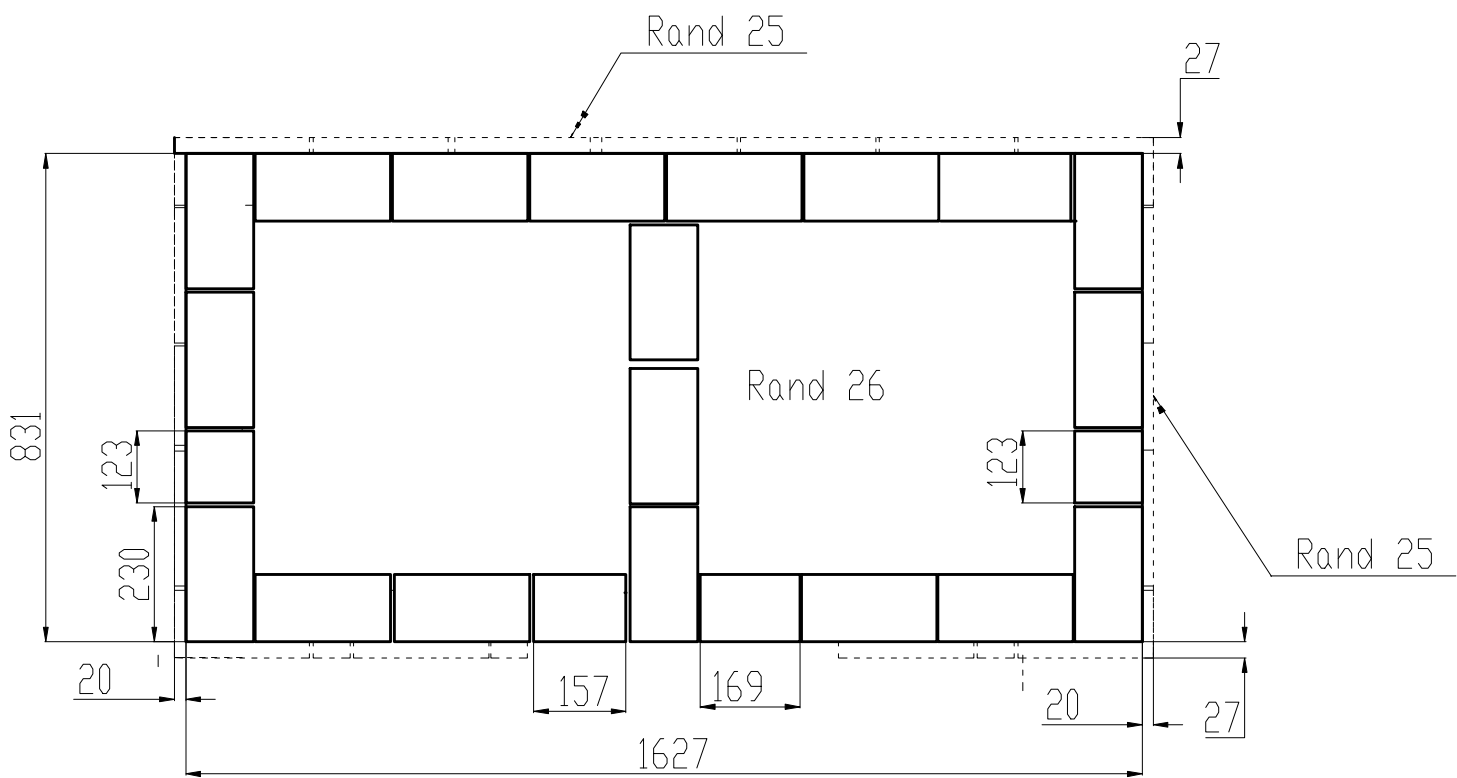
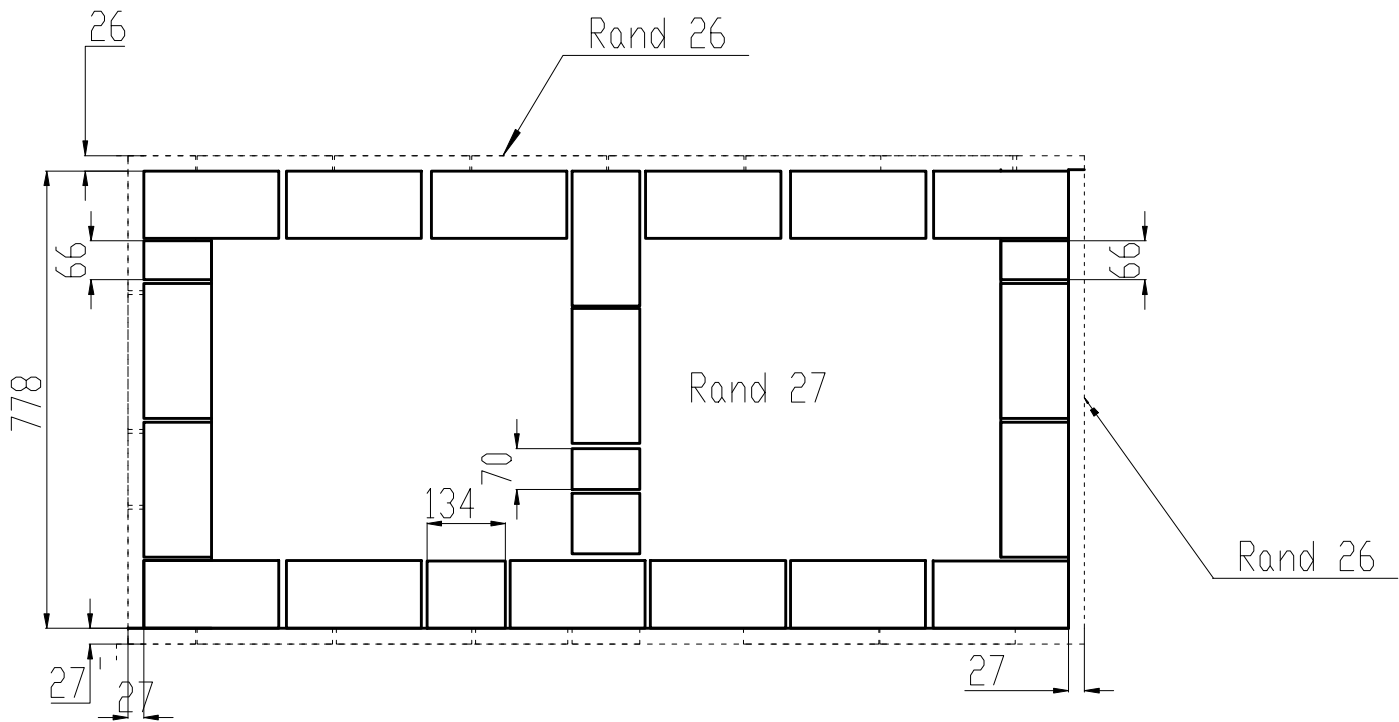
40

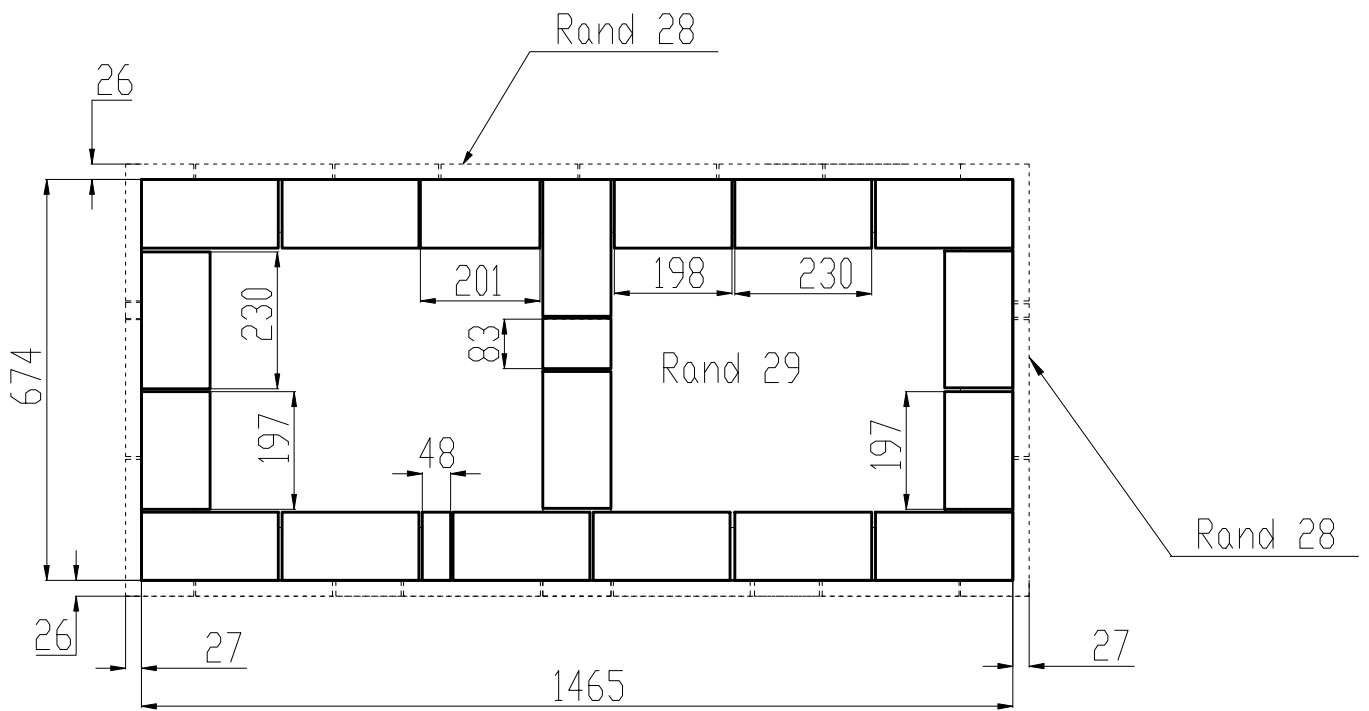
965

Randul 23

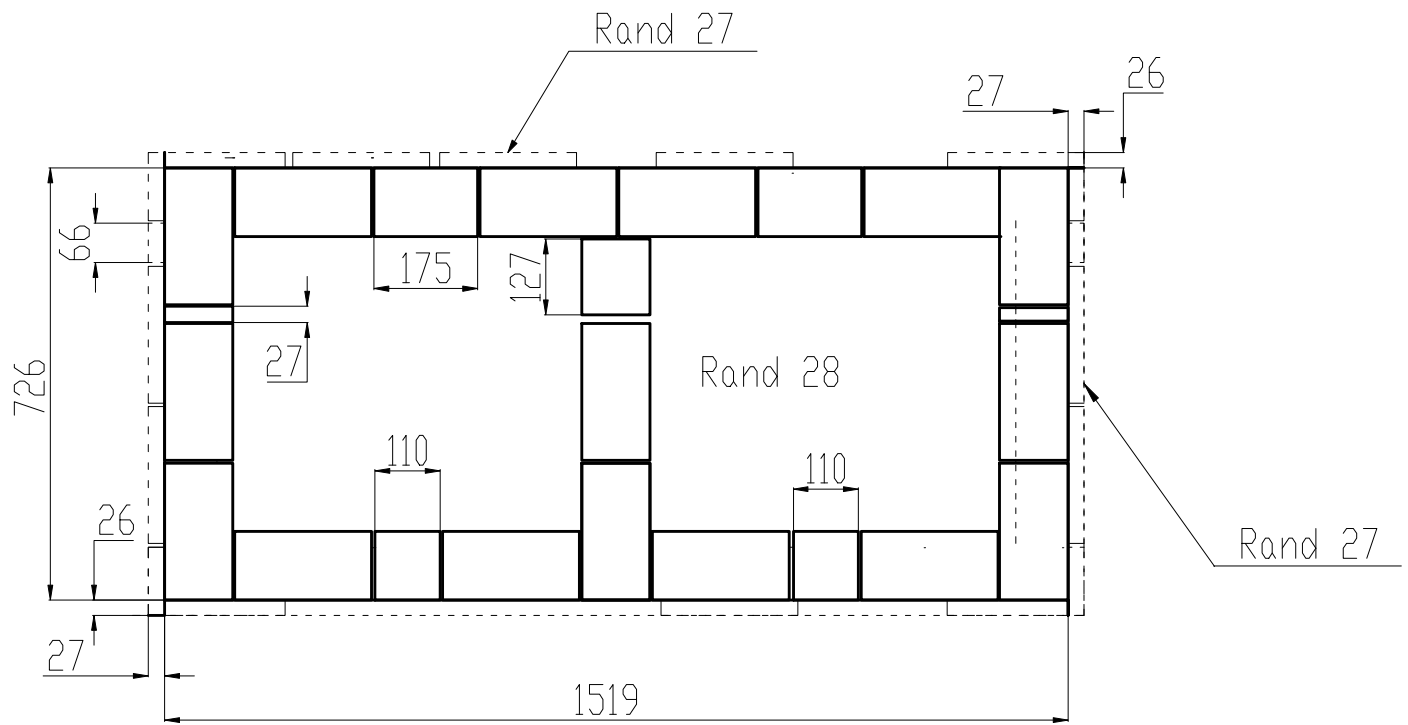
23

40

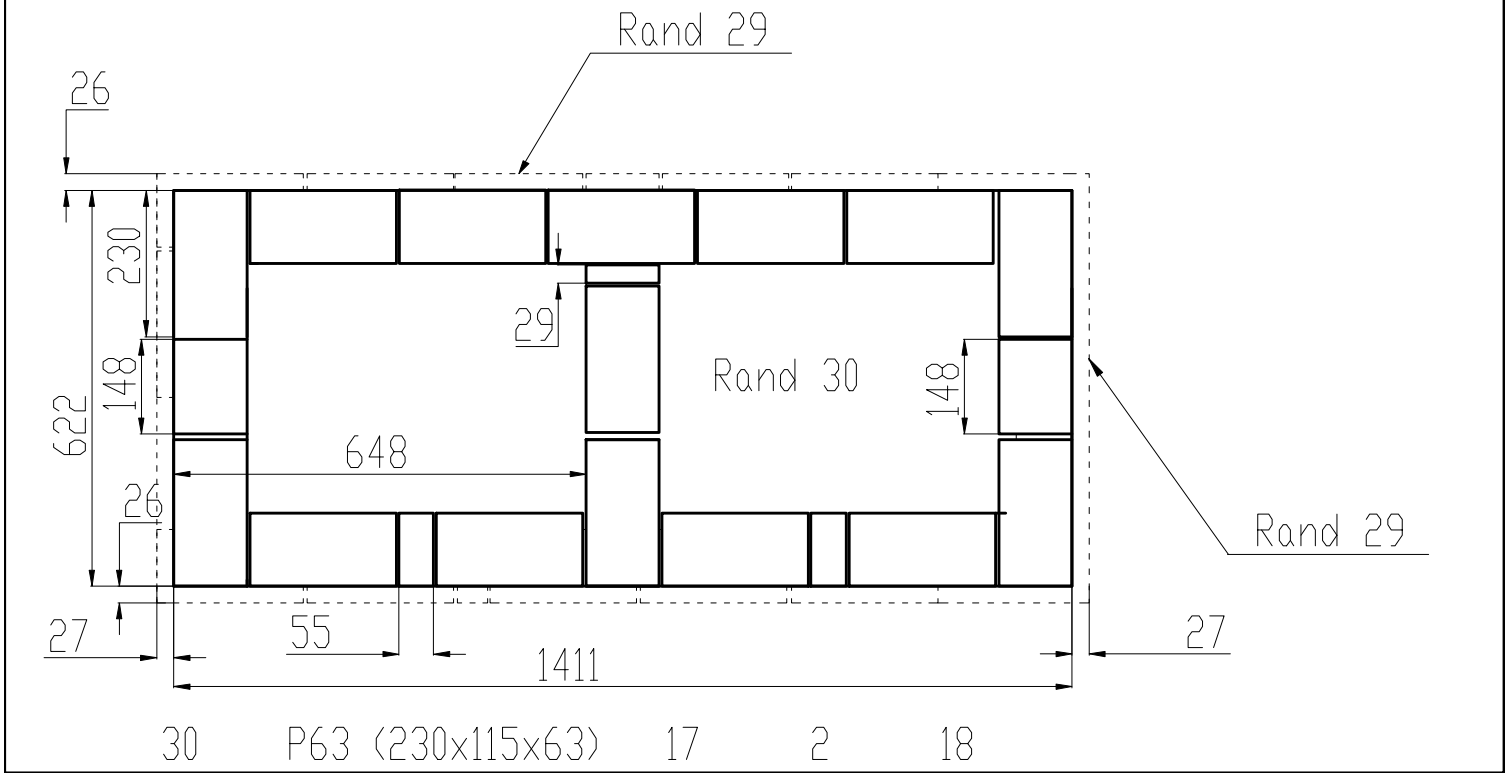
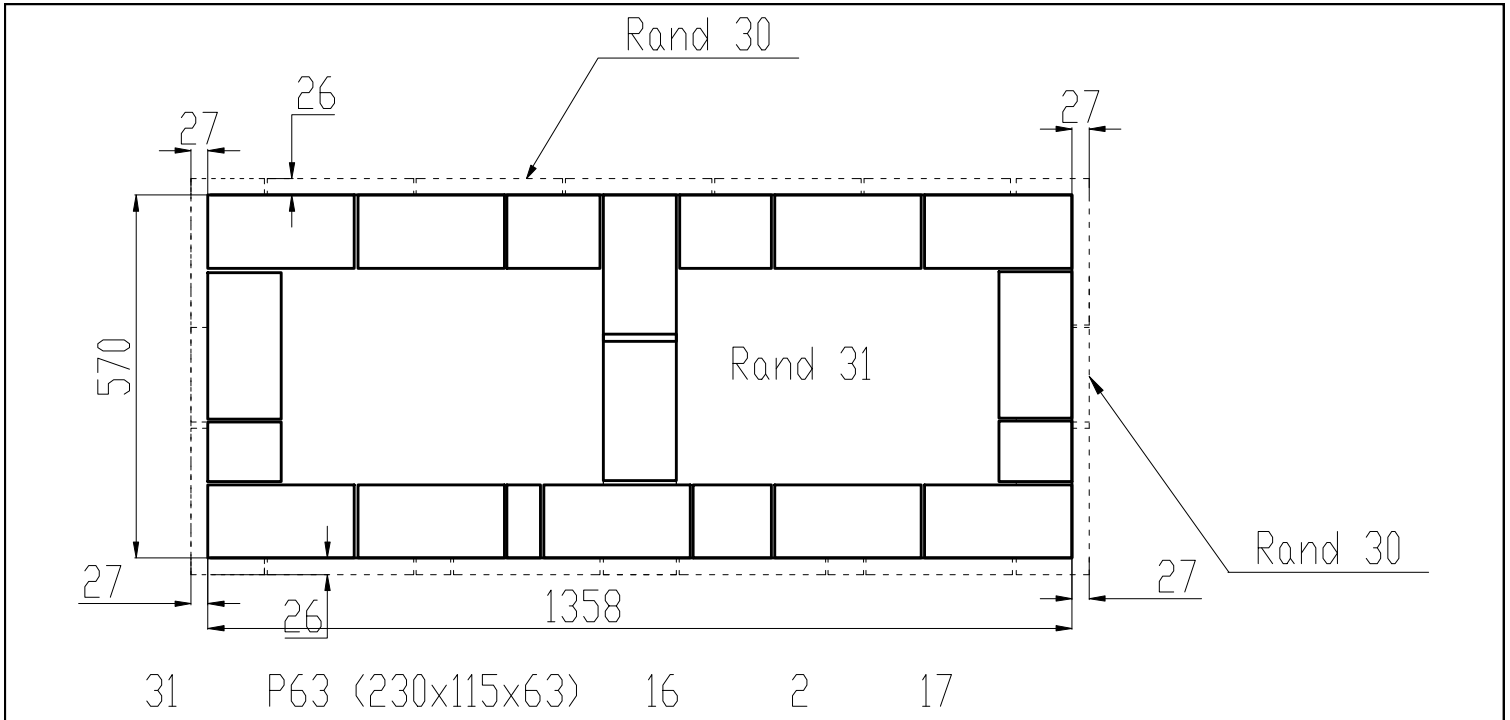


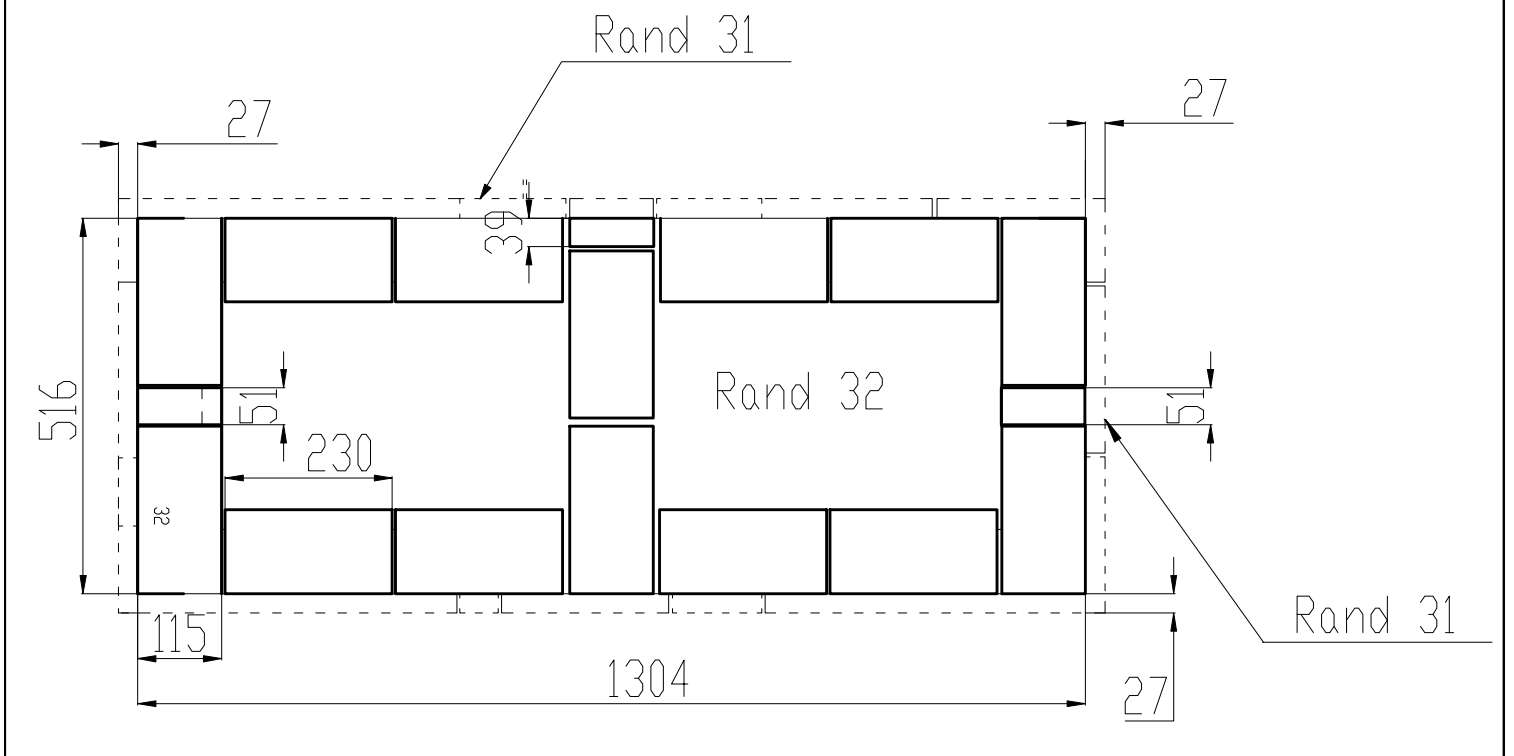
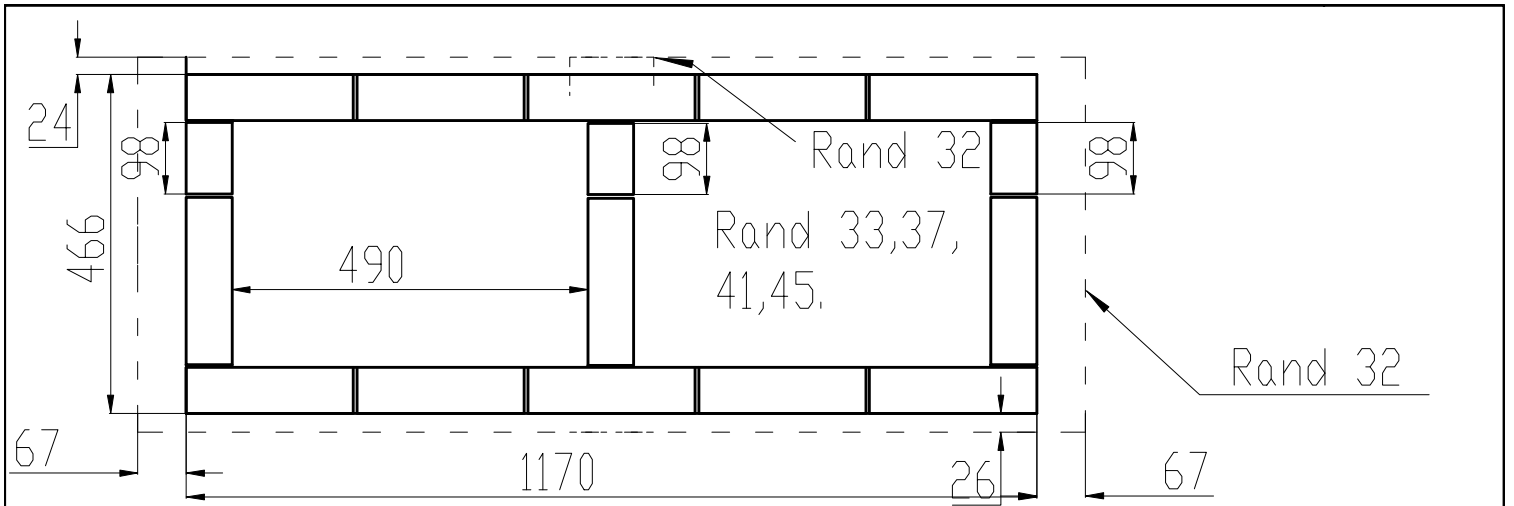


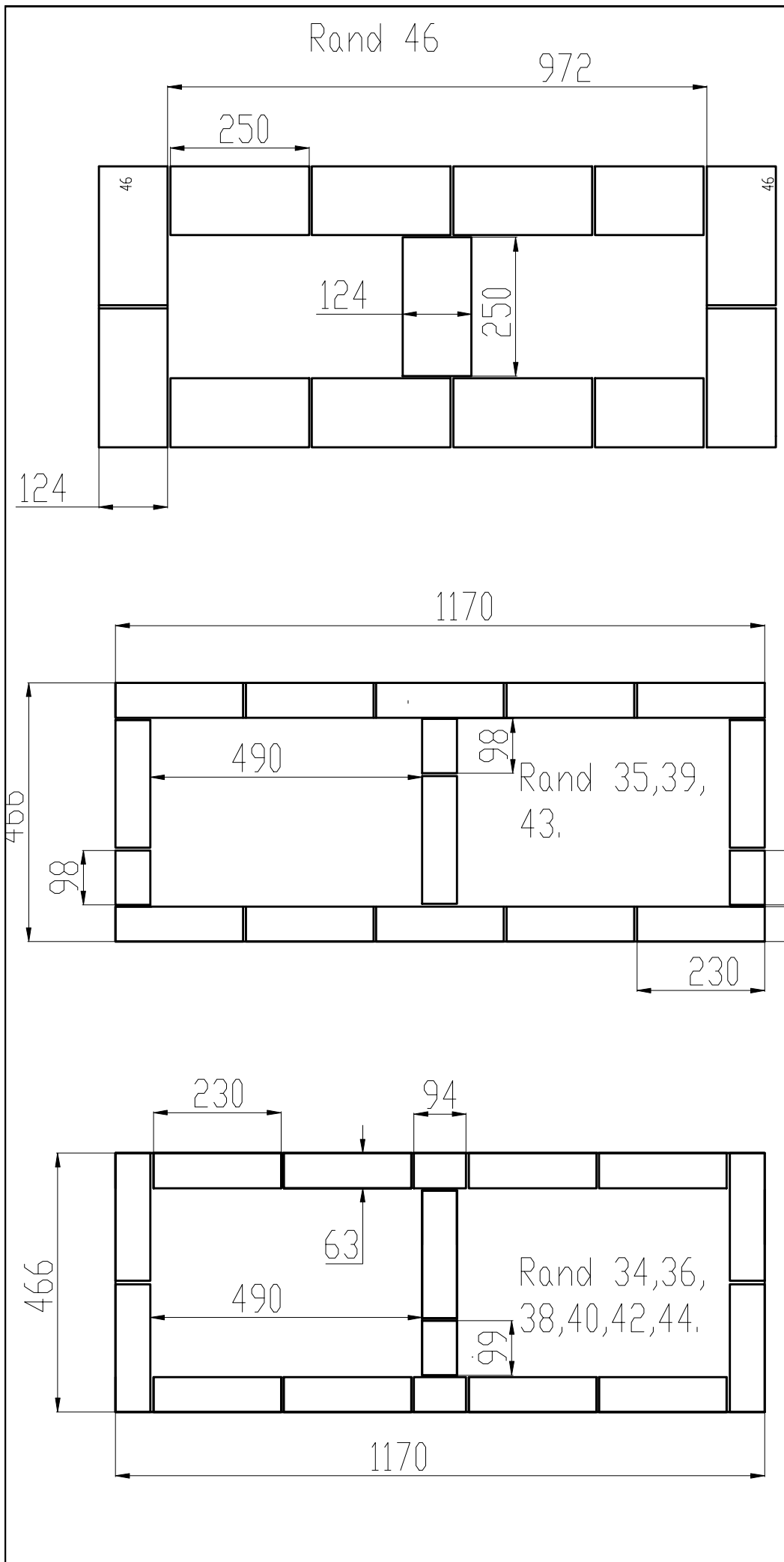
29 P63 (230x115x63) 18 2 19



28 P63 (230x115x63) 21 4 23







Lista de caramizi varianta 1
Cuptor+grill

Caramizi P63 (230x115x63)

Nr. rand	Nr. caramizi
1	60
2	18
3	18
4	18
5	18
6	18
7	18
8	43
9	18
10	195
11	24
12	38
13	45
14	24
15	24
16	36
17	24
18	21
19	28
20	225
21	26
22	495
23	25
24	36
25	23
26	23
27	25
28	23
29	19
30	18
31	17
32	14
33	135
34	14
35	145
36	14
37	135
38	14
39	145
40	14
41	135
42	14
43	145
44	14
45	145

Total 1015 buc.

Caramizi R-28 AS

Nr. rand	Nr. caramizi
13	18
16	7
19	33
2	25

Total 83

Caramizi 2R-28 AS

Nr. rand	Nr. caramizi
46	13

Total 12 buc.

Caramizi R32-28 AS

Nr. rand	Nr. caramizi
17	26
19	4
Total	30 buc.