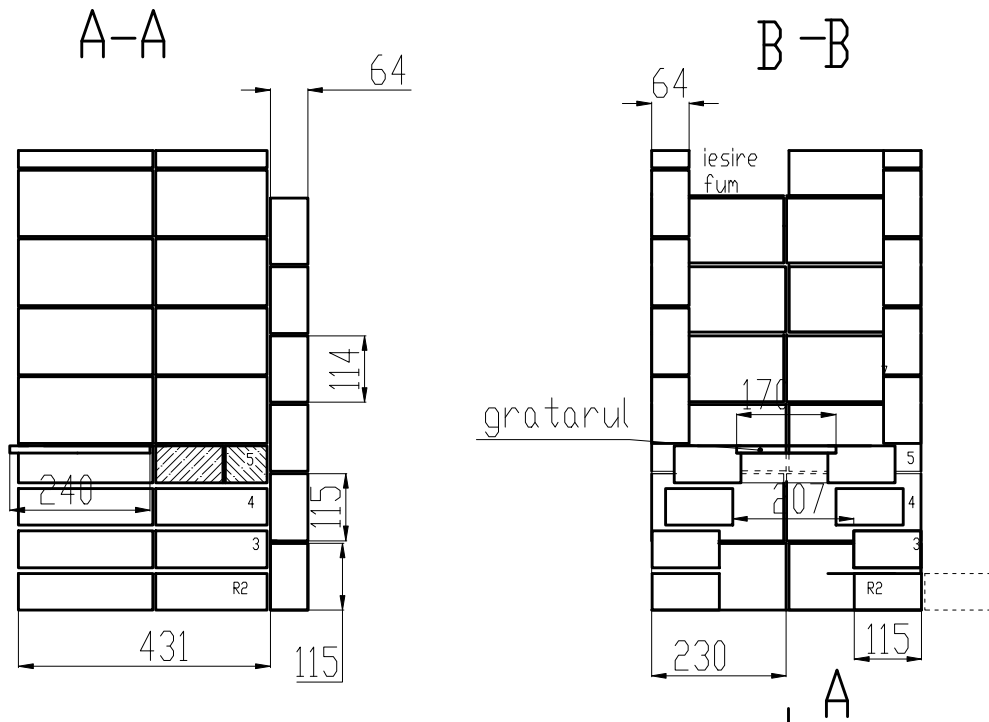


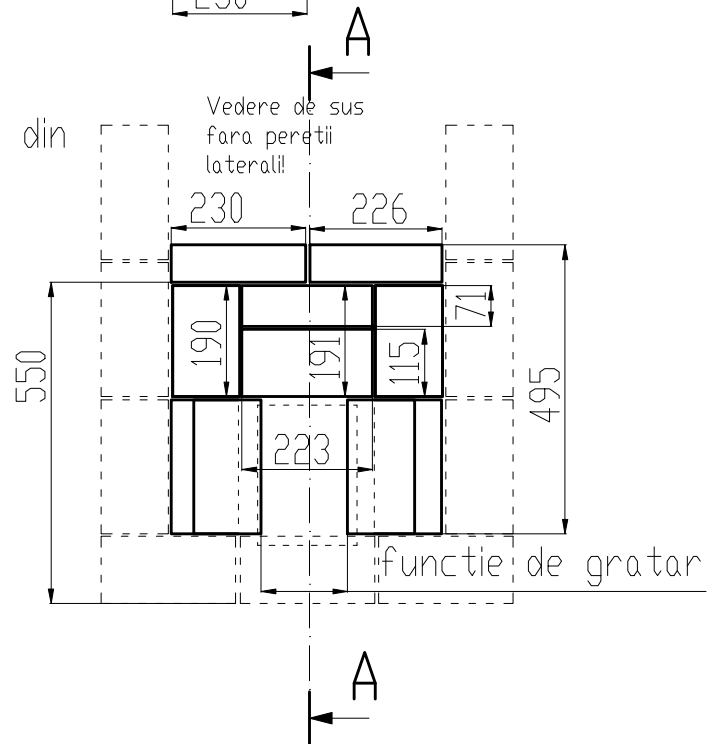




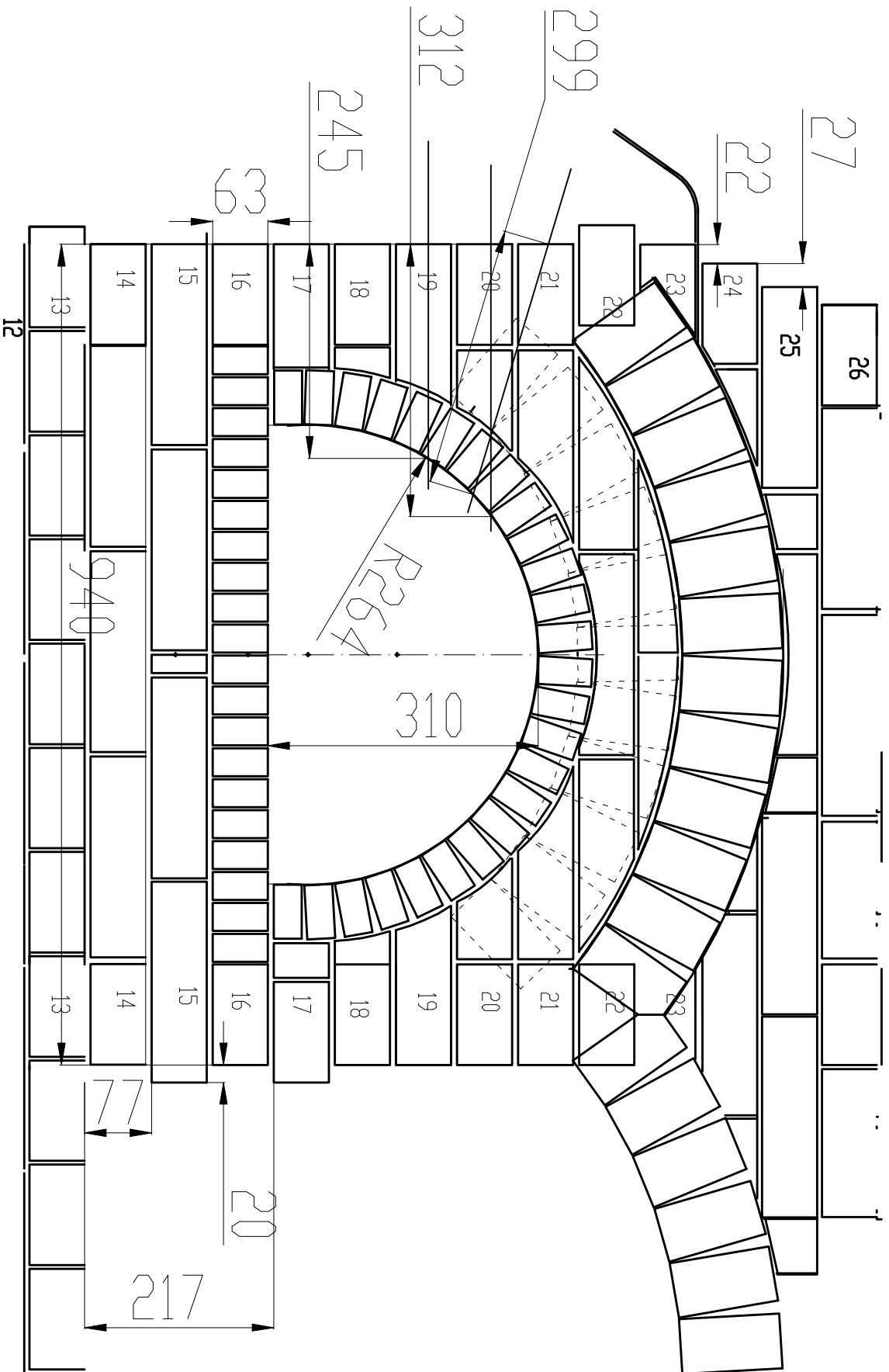
# CAPTUSEALA SOBEI LA FOCAR



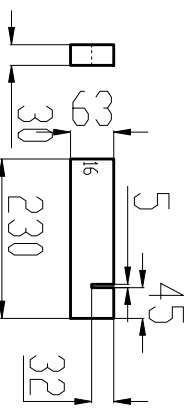
Nota: Pana la randul 4 se executa din rosie iar mai sus samota.



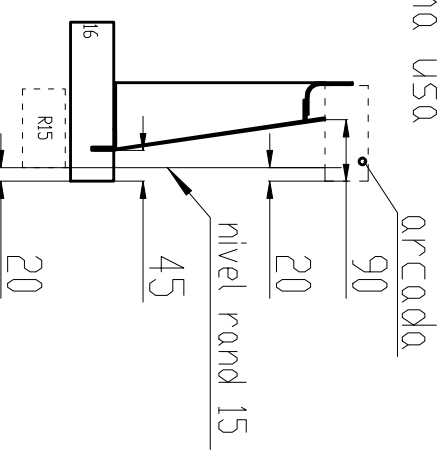
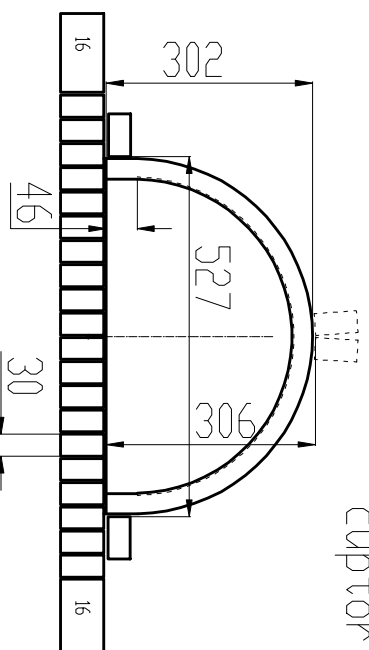
Detaliu cupTOR pizza



Taiere caramizi sub  
rama usii 20 buc.

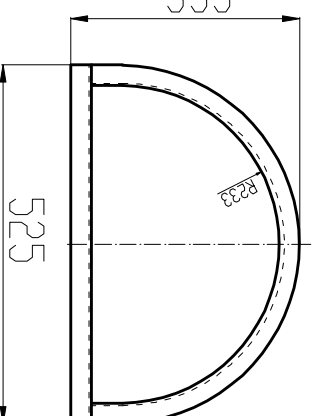
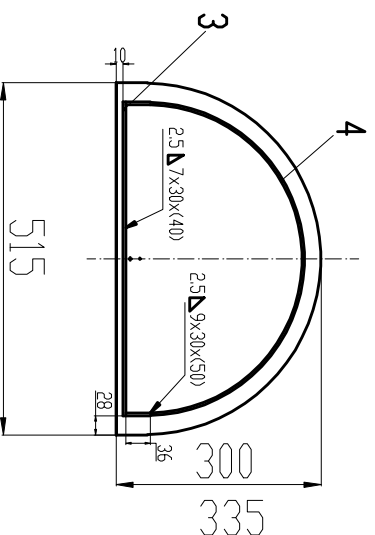
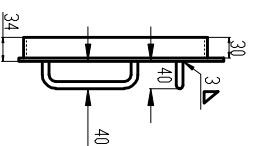
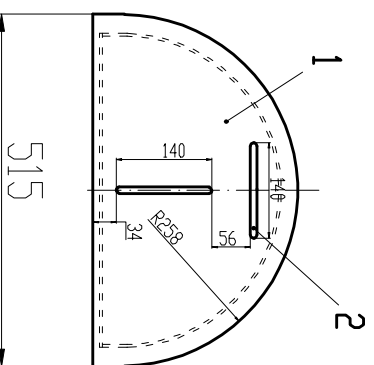


Detalii montaj rama usa  
cuptor pizza

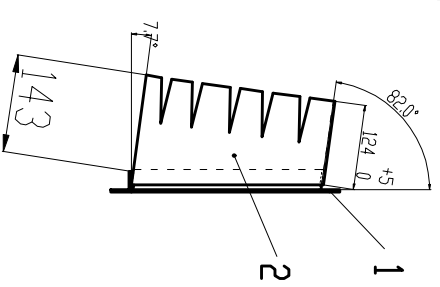


Se taie din caramida R-28 AS, dar  
numai din zona ramei (cota 525)

ANSAMBLU USA

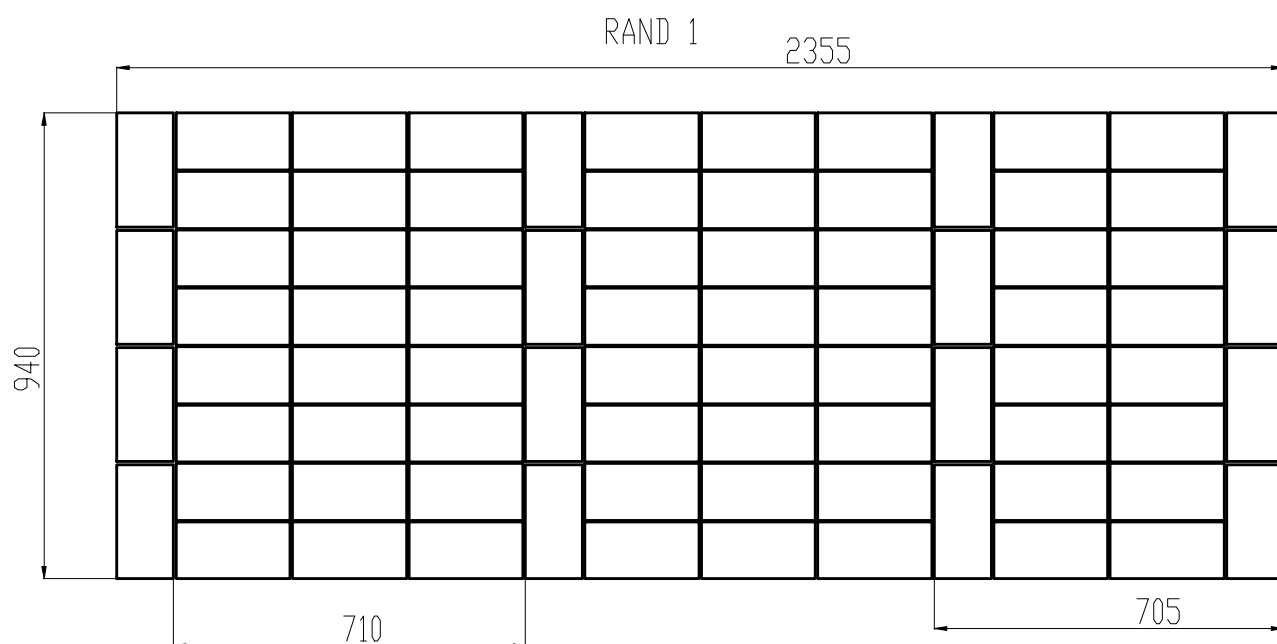
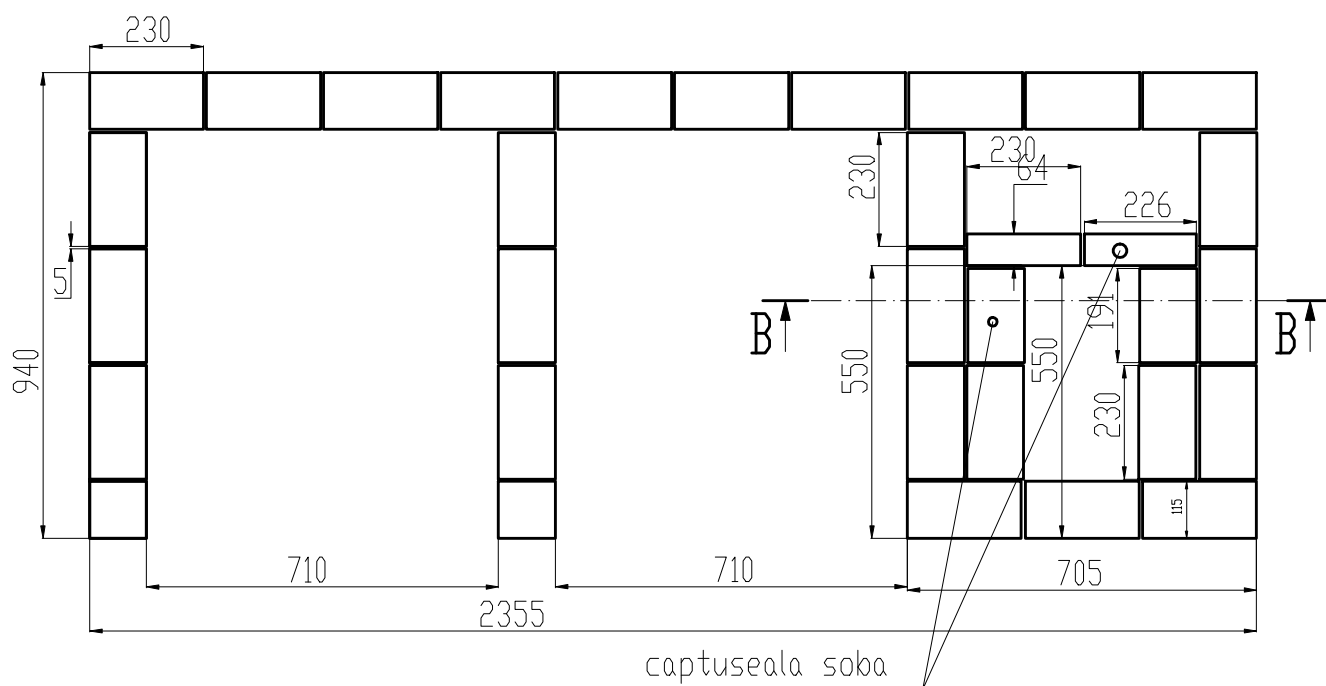
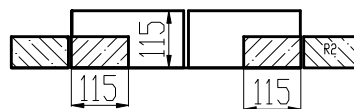


ANSAMBLU RAMA

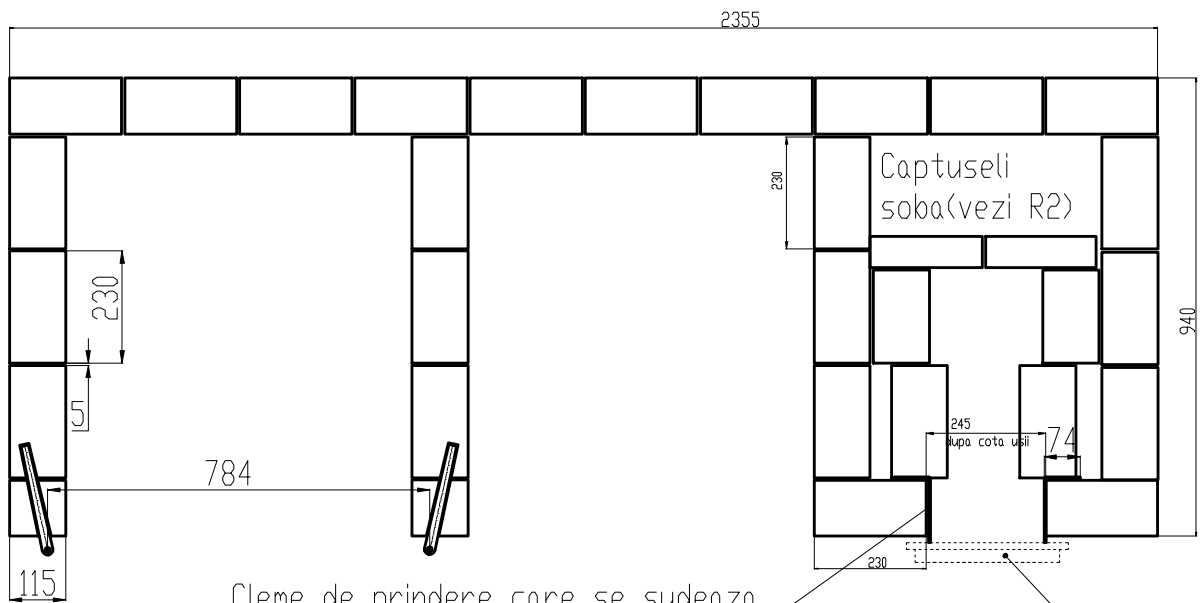


# Randul 2

## B-B



# Randul 4 si 6

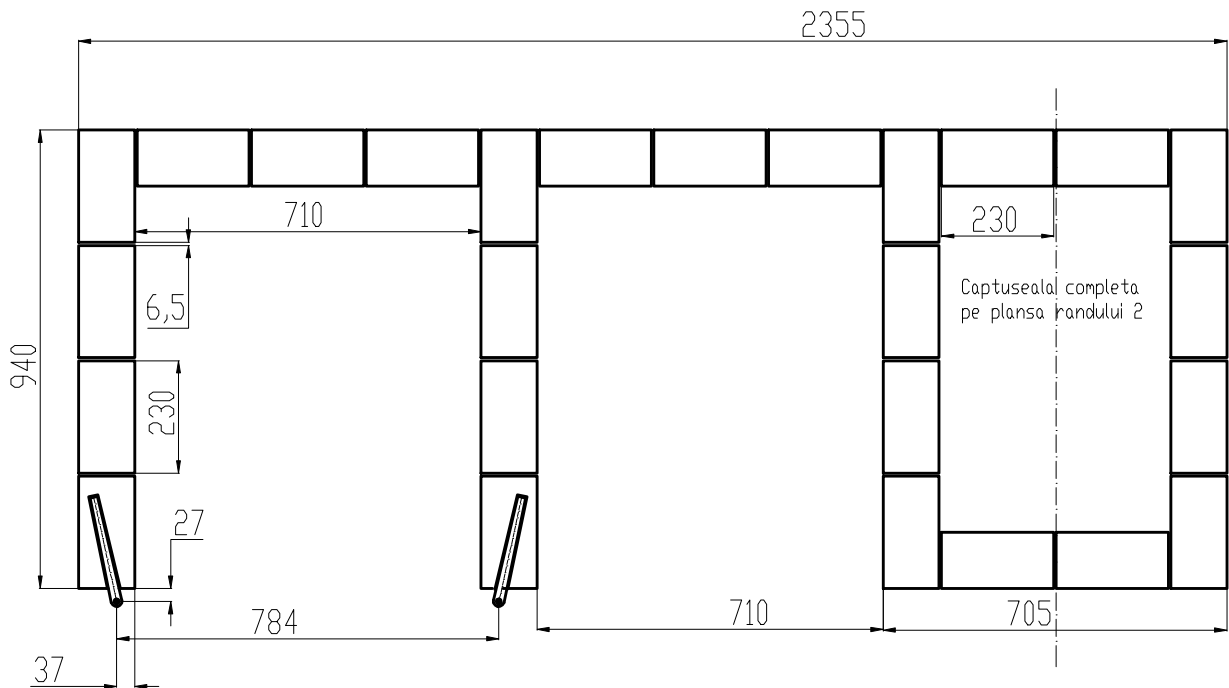


Cleme de prindere care se sudeaza pe rama de la usa

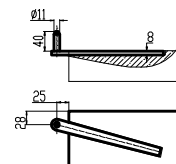
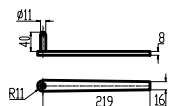
Ansamblu usa soba (focar+ cenusar)

ATENTIE: Balamalele se fixeaza numai la randul 6 pe linie cu cele de la randul 3.

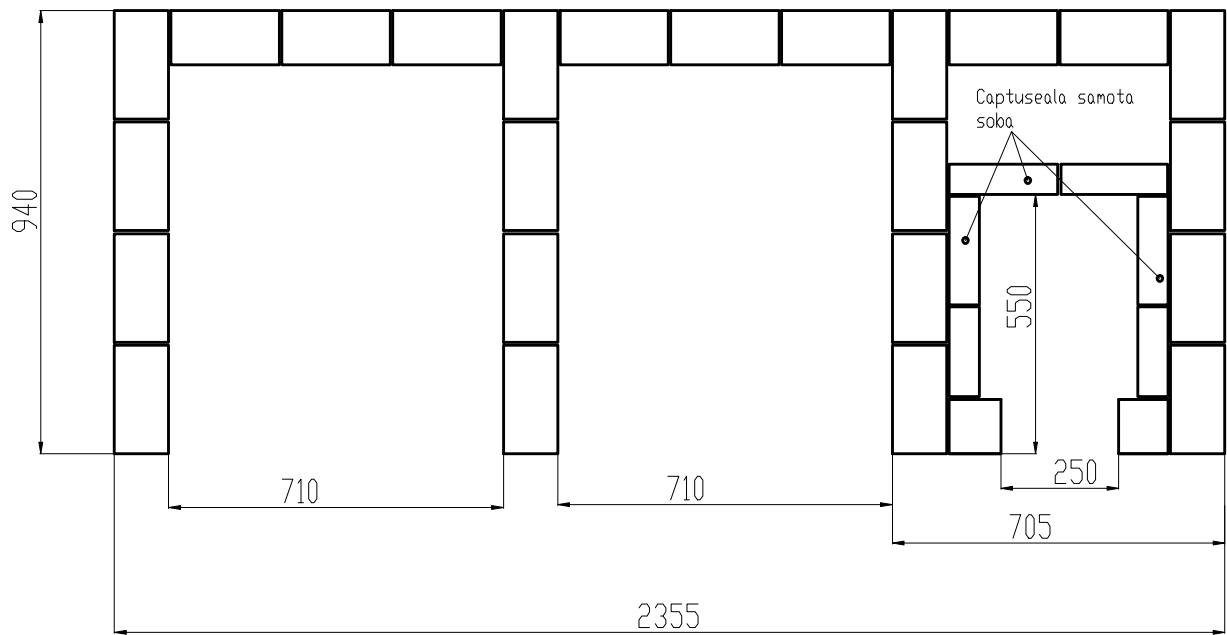
# Randul 3



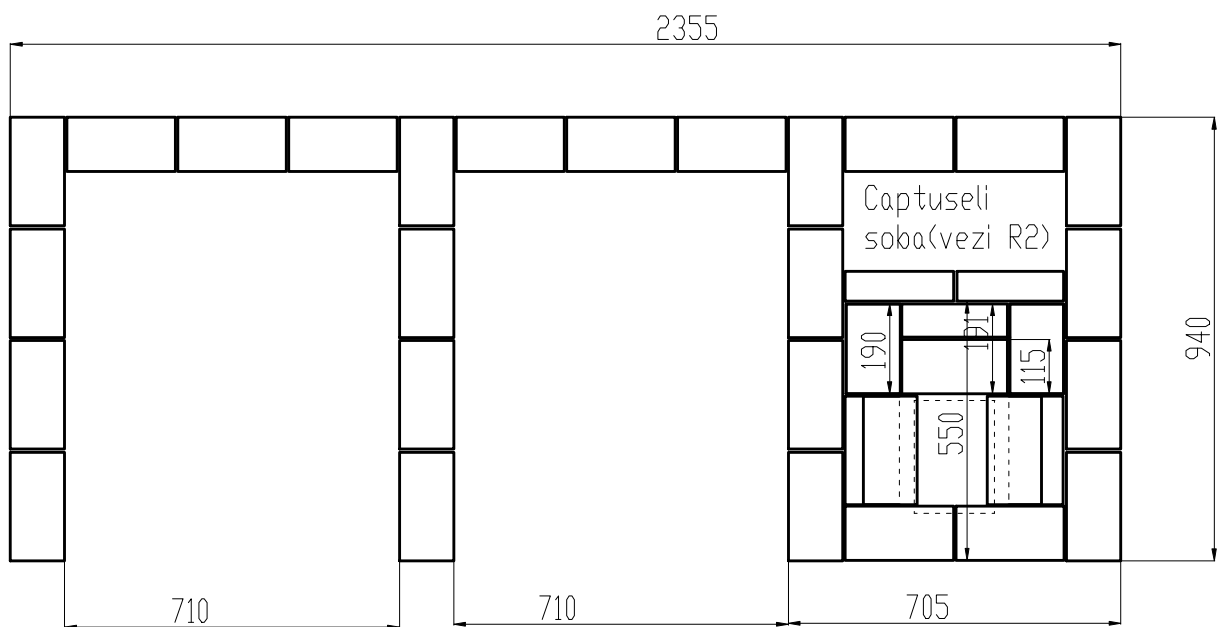
Balamale 'tata' Necesari 8 buc. Detaliu montaj balamale



# Randul 7



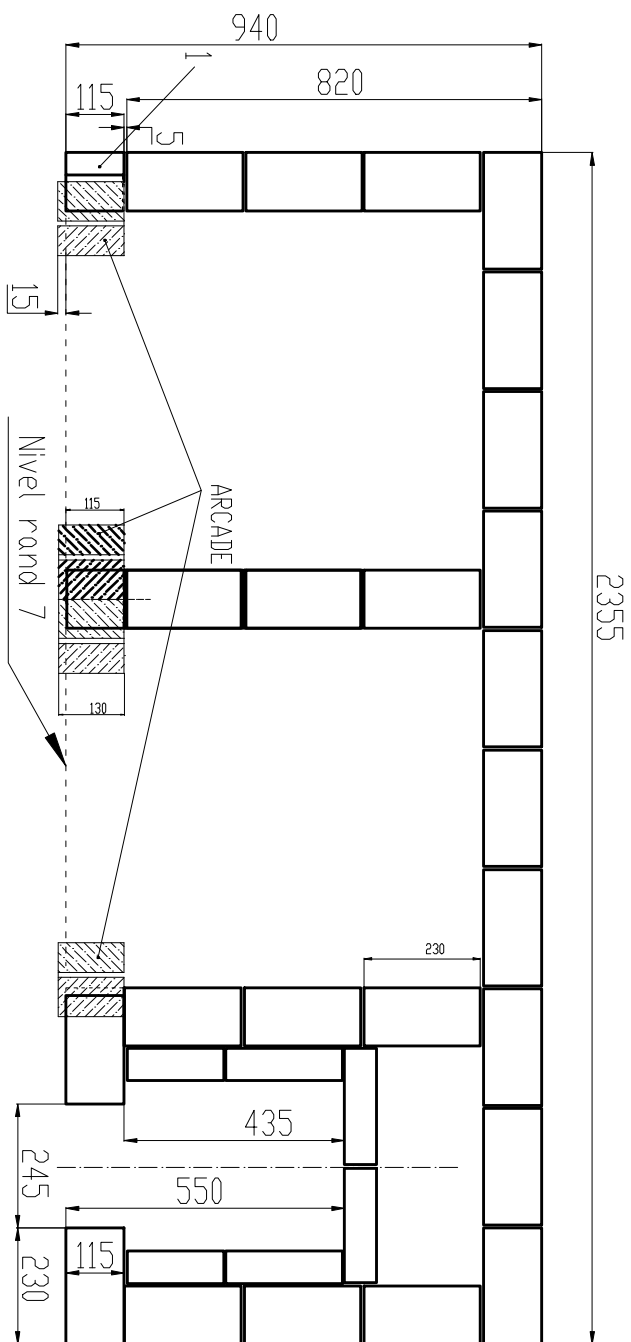
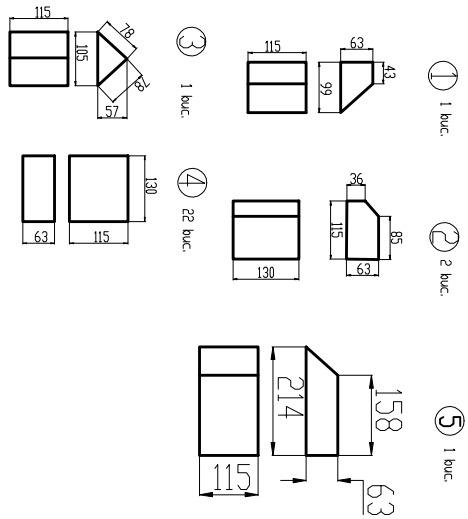
# Randul 5





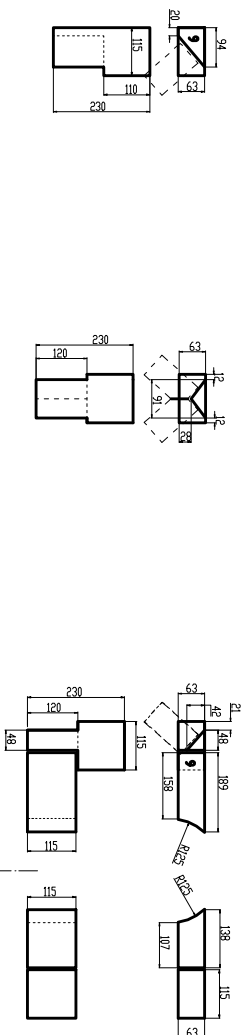
# RANDUL 8

Caramizi taiate R8



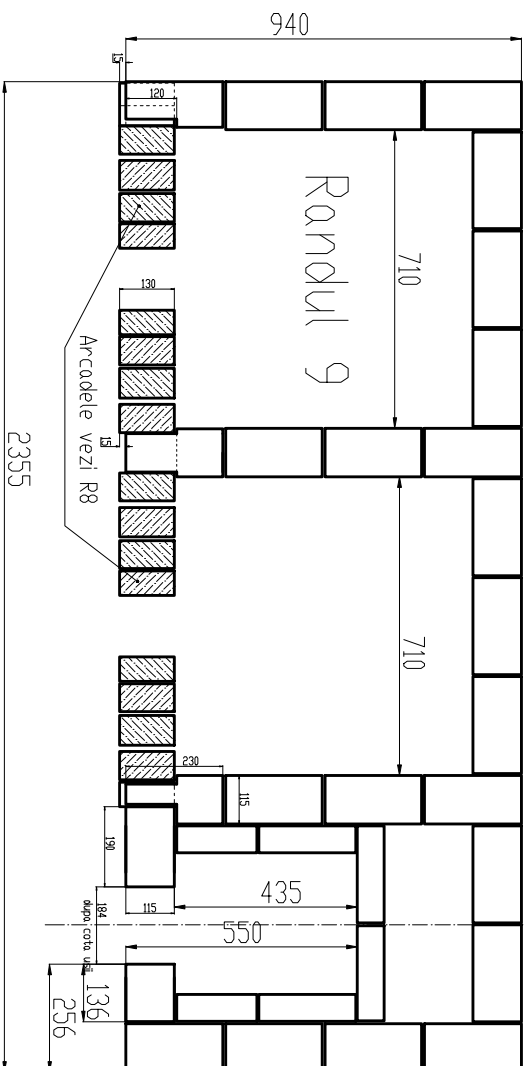
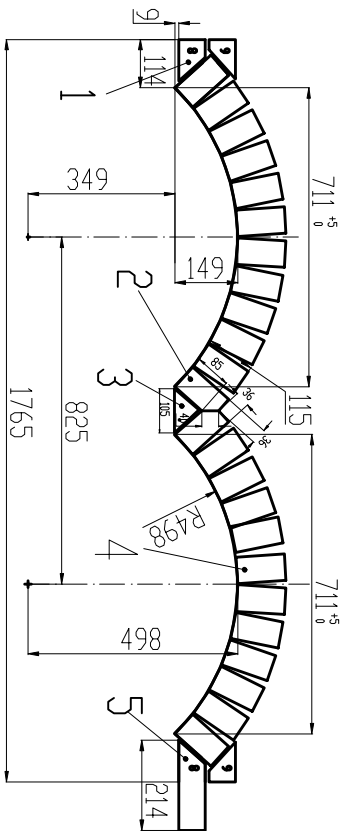
# Randul 9

Caramizile prelucrate la R9

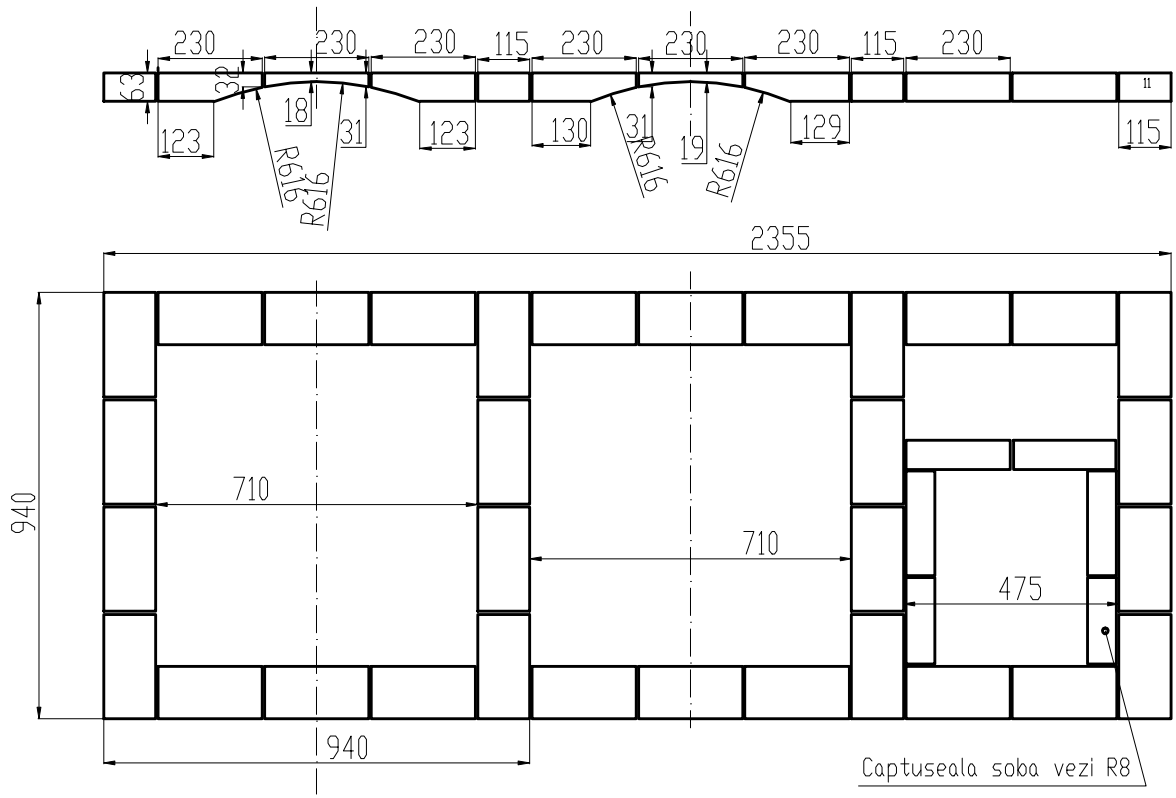


Construcția arcadei la R8

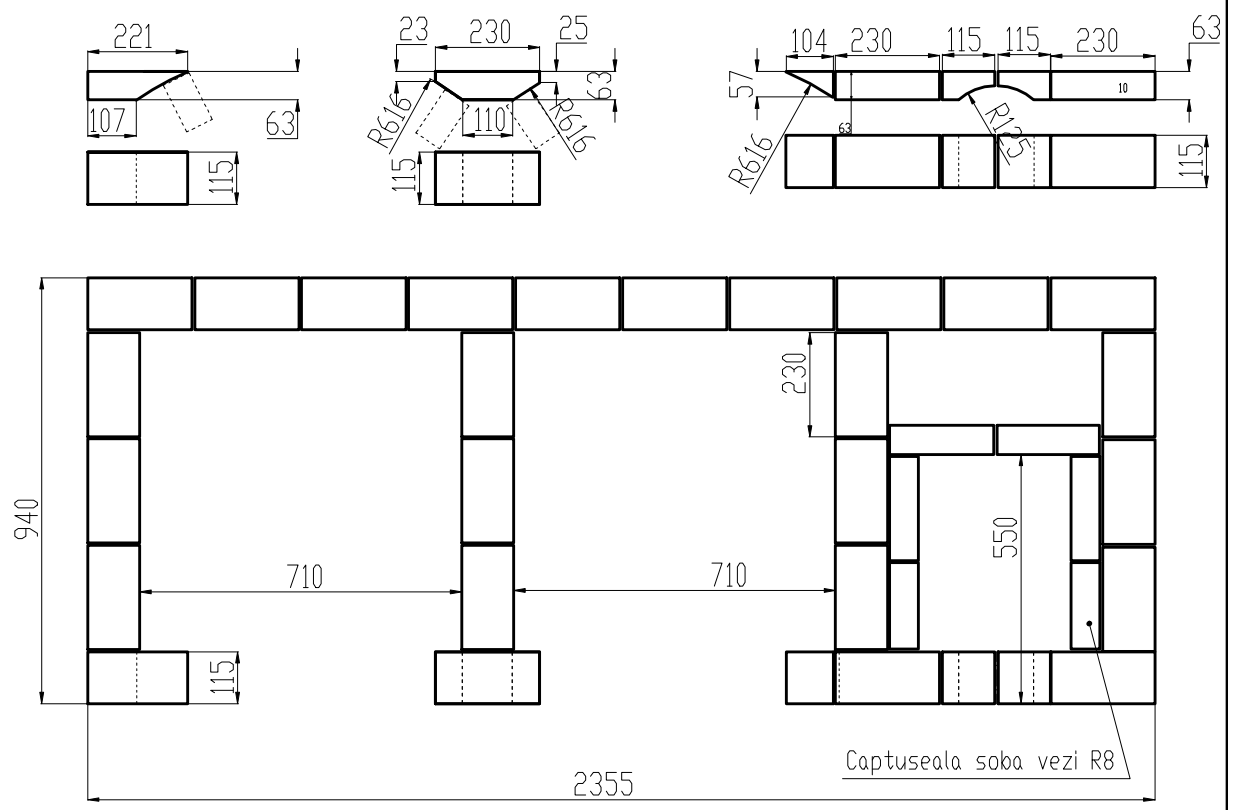
Vezi din A



# Randul 11

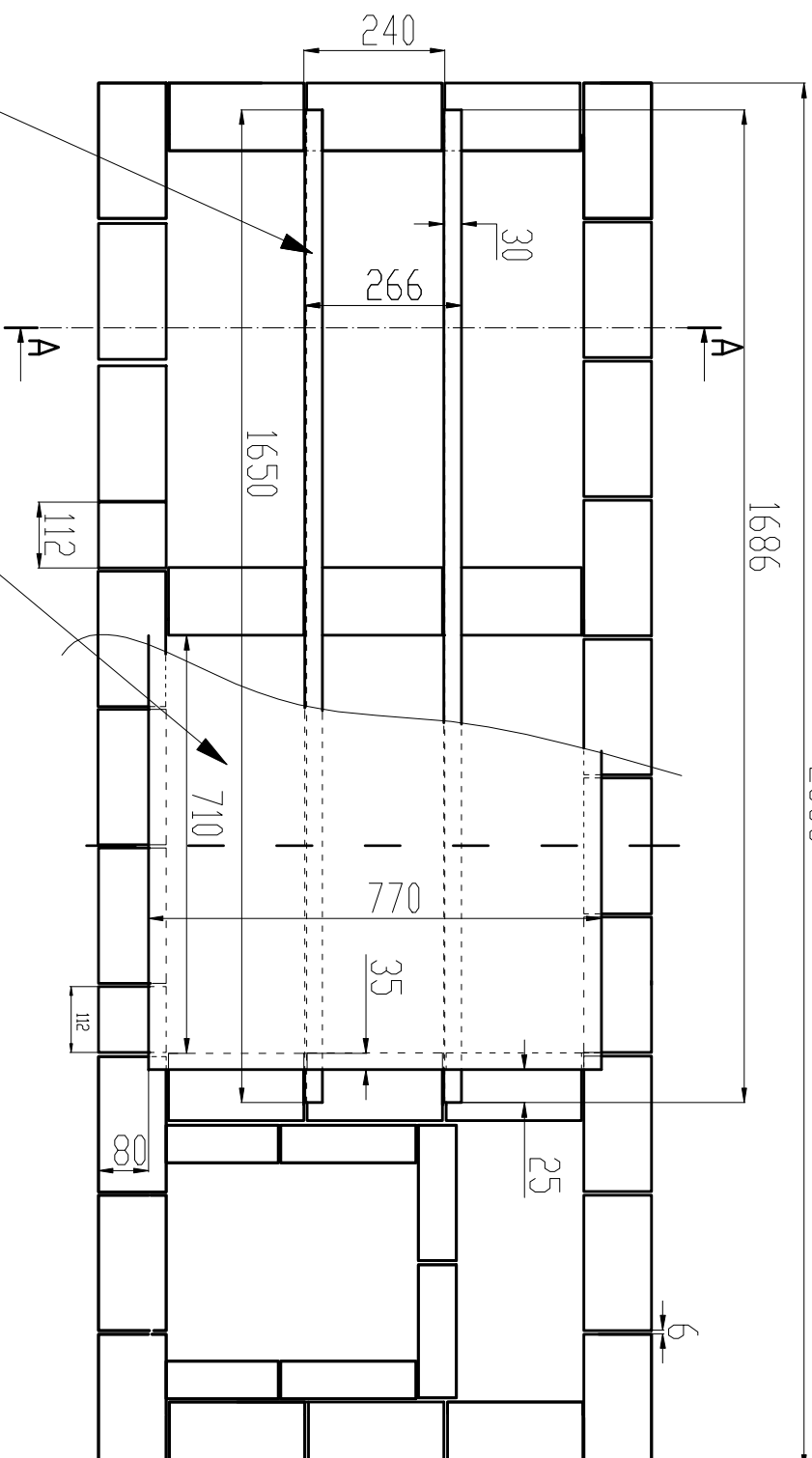


# Randul 10 (fara arcade)



# Randoul 12

2355

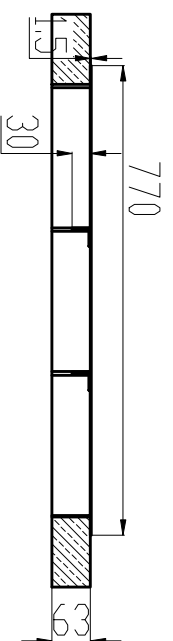


Cornier  
L30X30X3 2buc.  
L=1650mm

Tabla 1,5x1600x770  
1 buc.

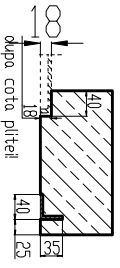
A-A (rotita)

Nota: Cornierul va fi la nivelul superior al caramizilor  
peste care se pune tabla.

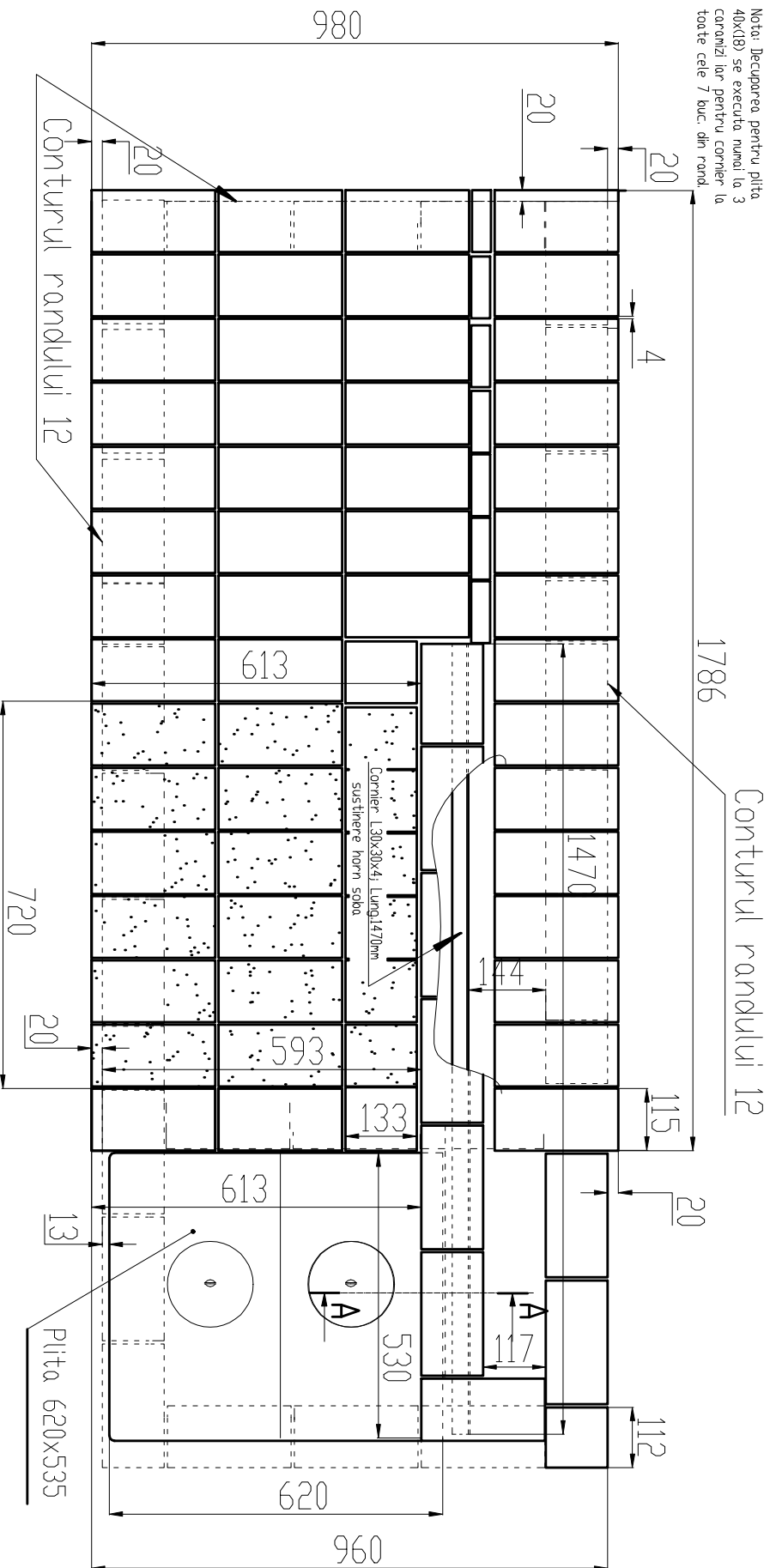


# Randul 13

A-A (roftia)

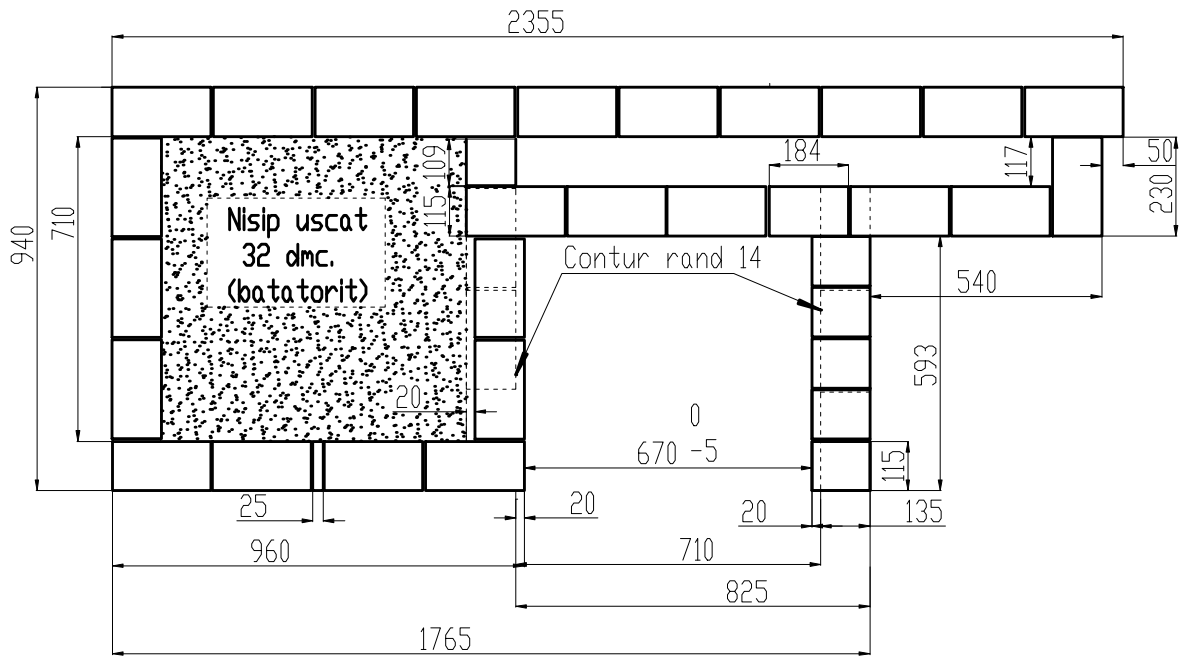


Nota: Decuparea pentru pila 40x18) se executa numai la 3 caramizi iar pentru cornier la toate cele 7 buc. din rand.

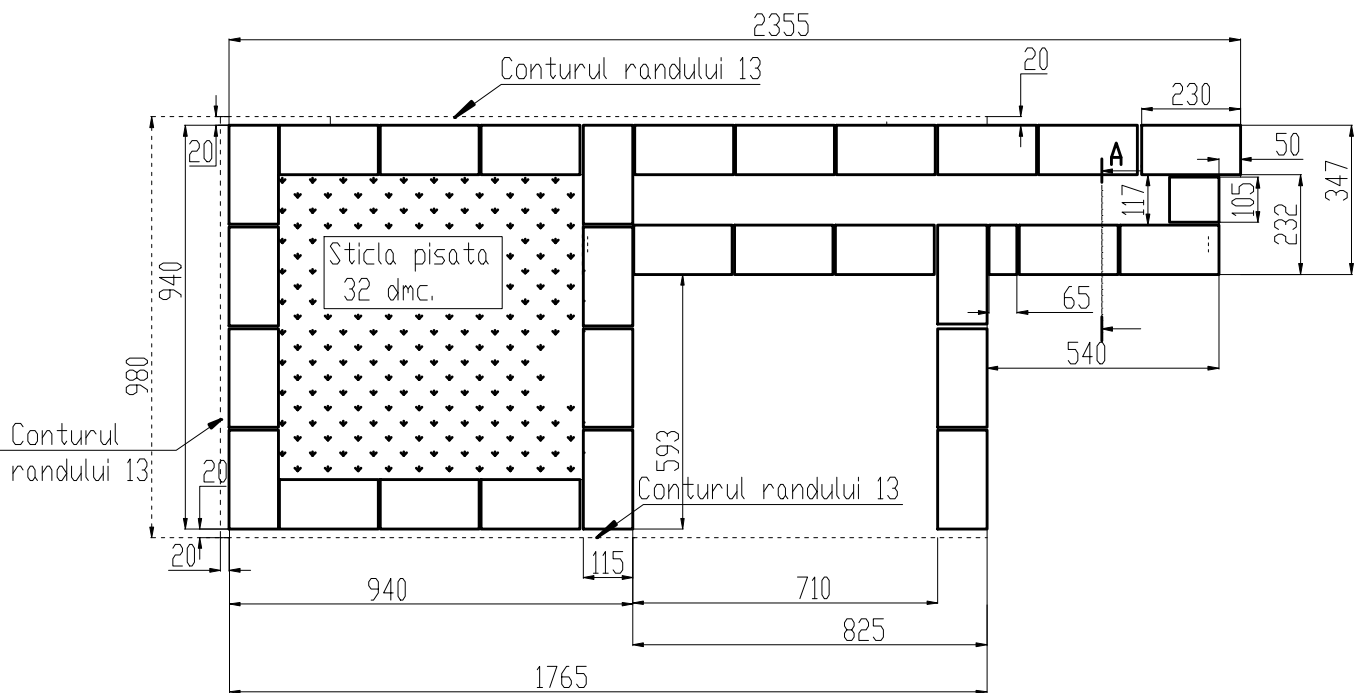


NOTA: Caramizile din zona 720x613 sunt din samota (R 28 AS - 230x114x64)

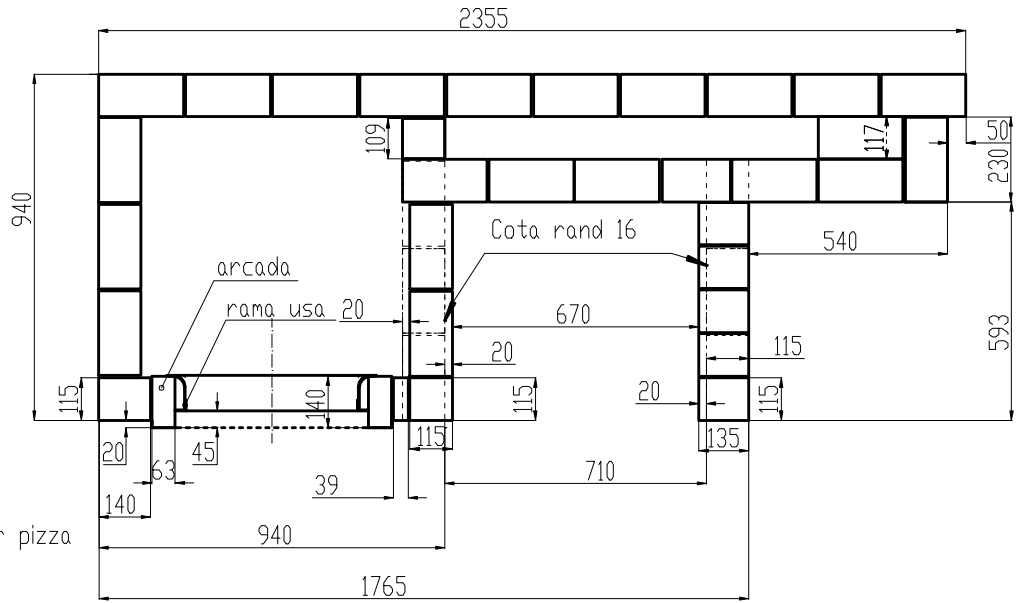
# Randul 15



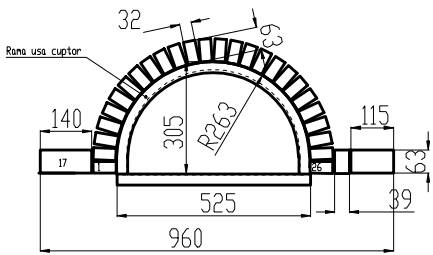
# Randul 14



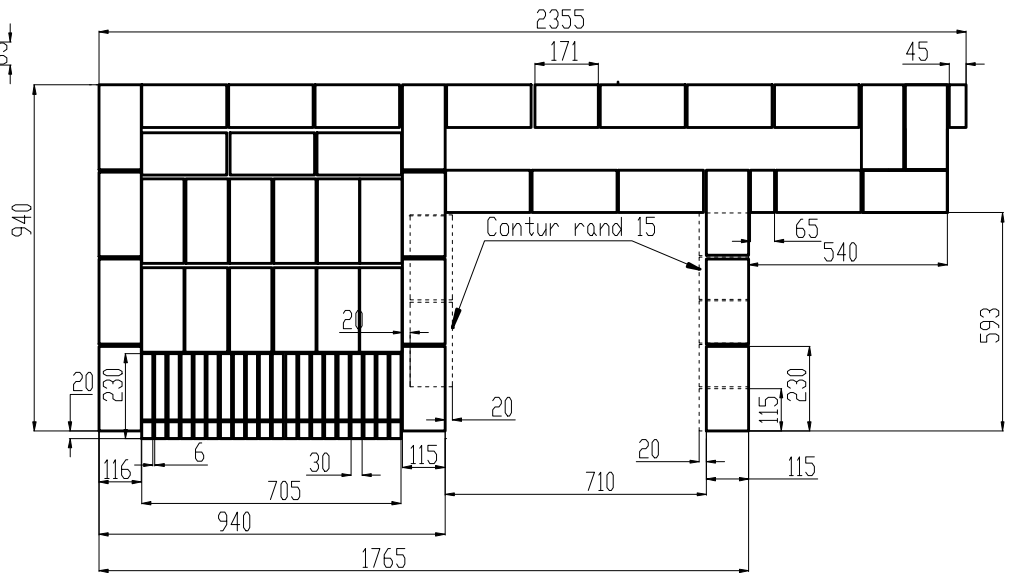
### Randul 17



Constructia arcadei cuptor pizza



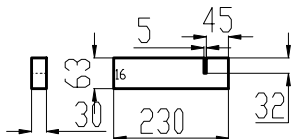
### Randul 16



### Randul 16

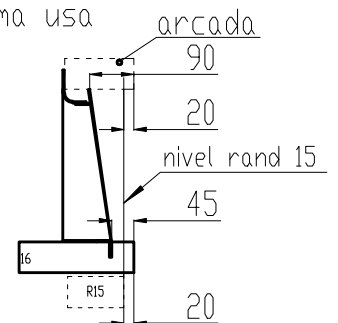
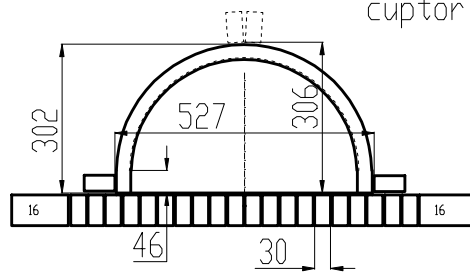
fara usa de la cupt. de pizza

Taiere caramizi sub  
rama usii 20 buc.



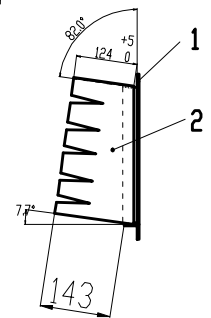
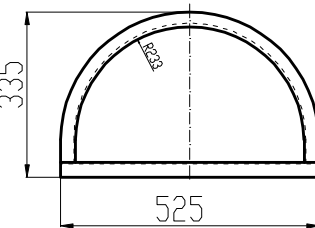
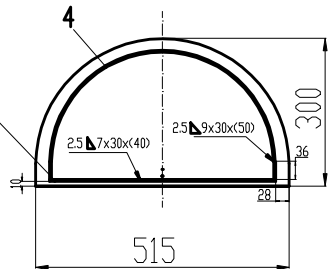
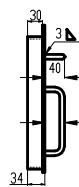
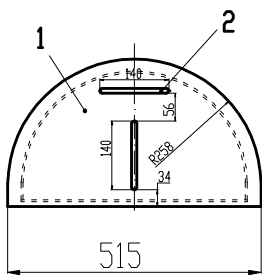
Se taie din caramida R-28 AS, dar  
numai din zona ramei (cota 525)

Detaliu montaj rama usa  
cuptor pizza

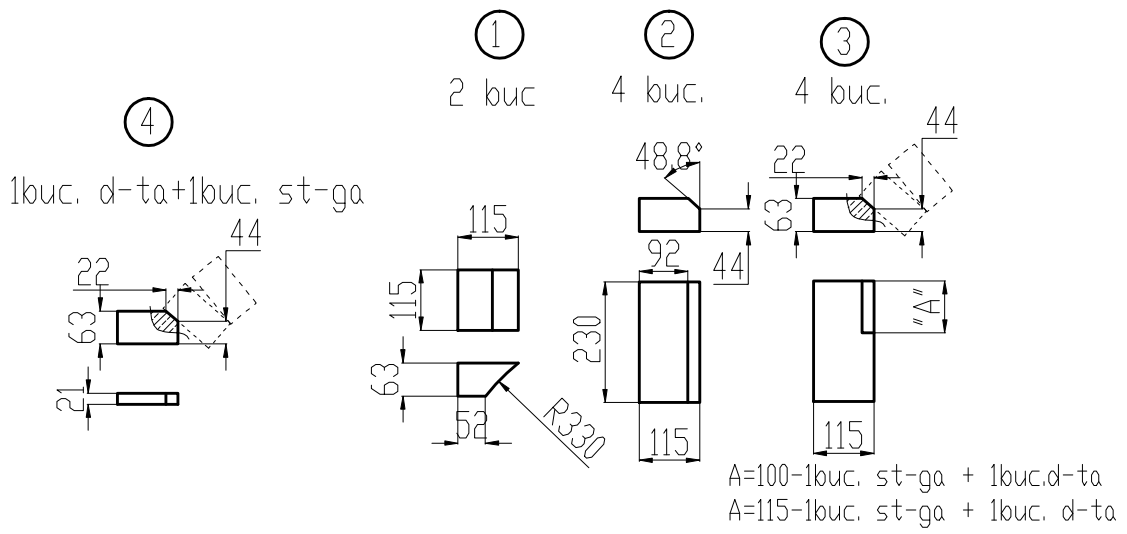


ANSAMBLU USA

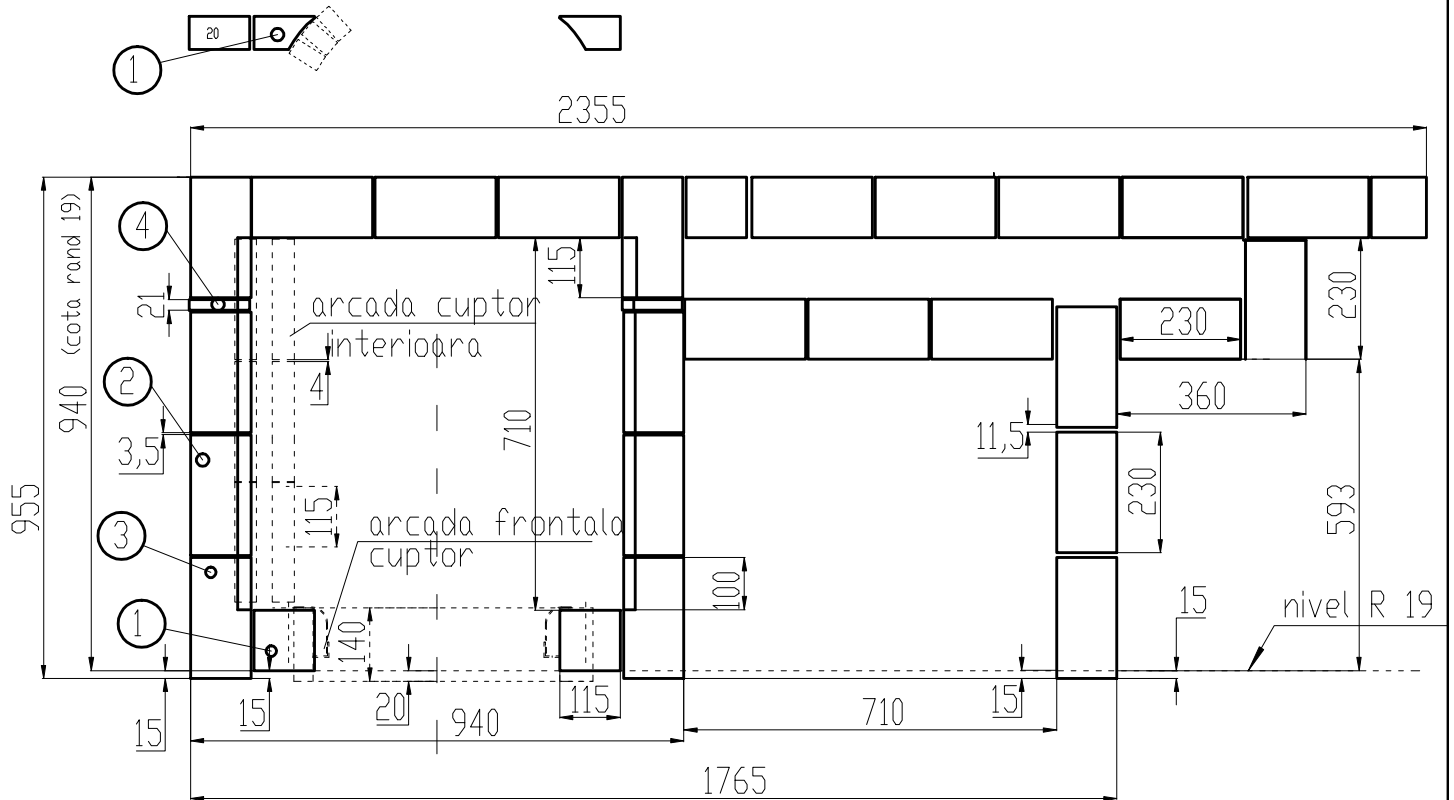
ANSAMBLU RAMA





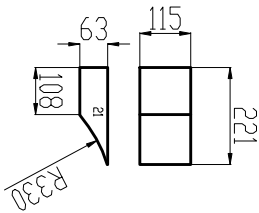


# Randul 20

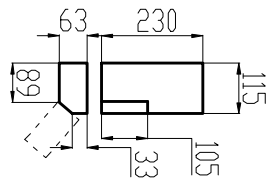
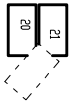


# Randul 21

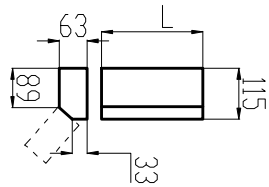
①  
2 buc.



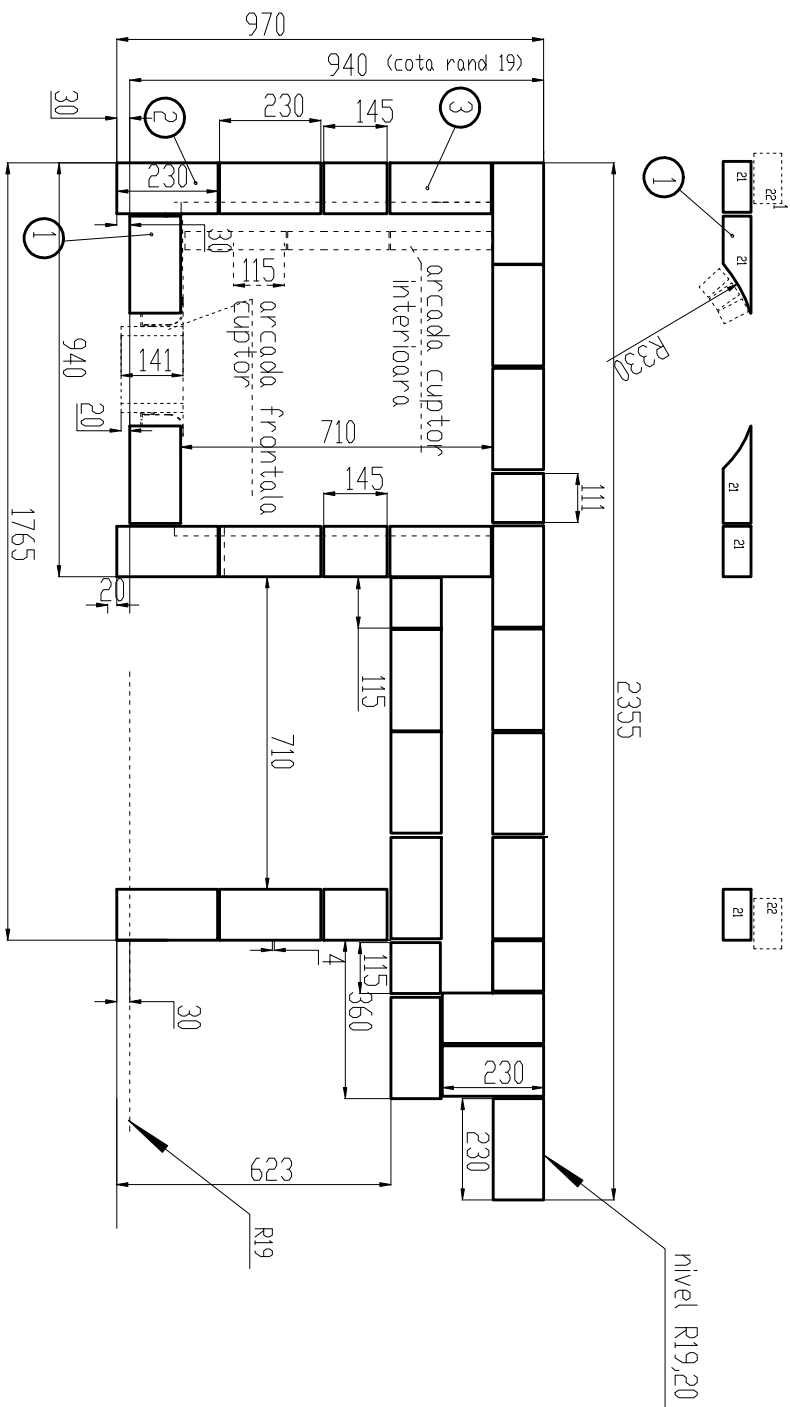
②  
2 buc. in oglinda



③

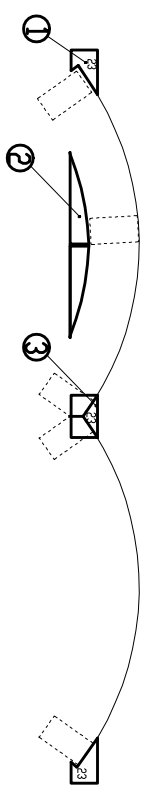


L=230 - 6buc.  
L=145 - 2buc.

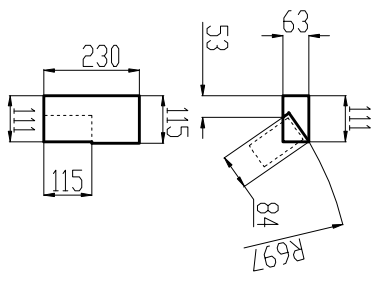




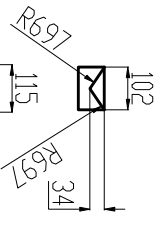
# Randul 23



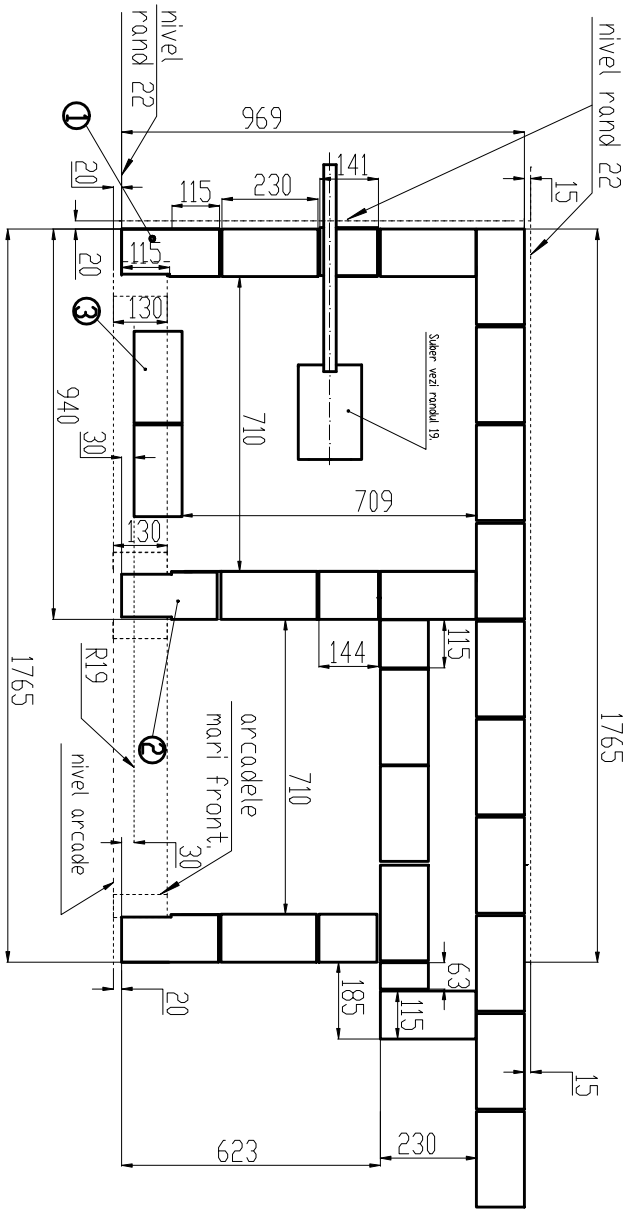
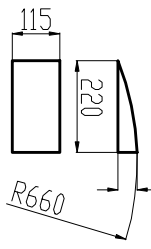
1 buc. d-ta+1 buc. st-ga



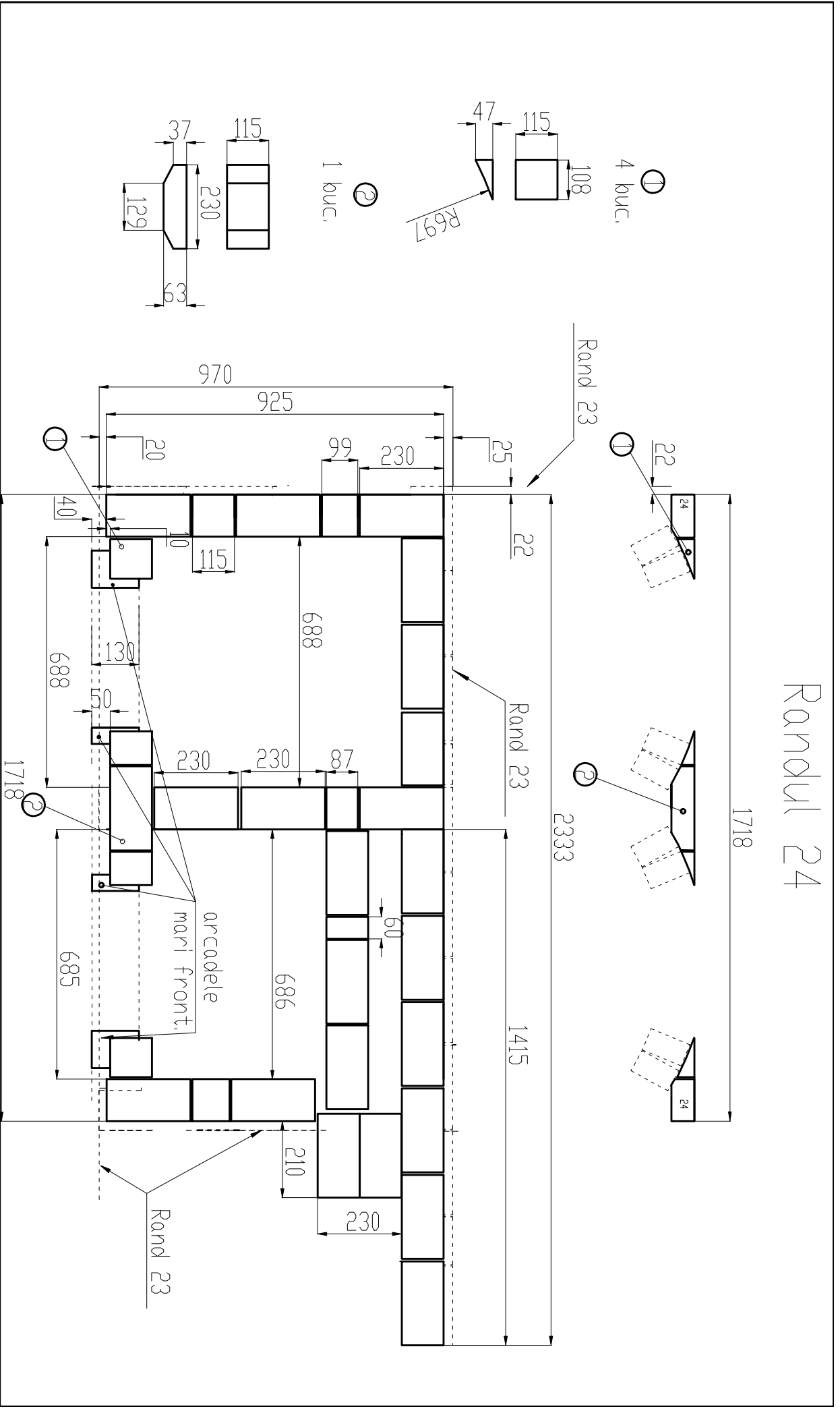
3

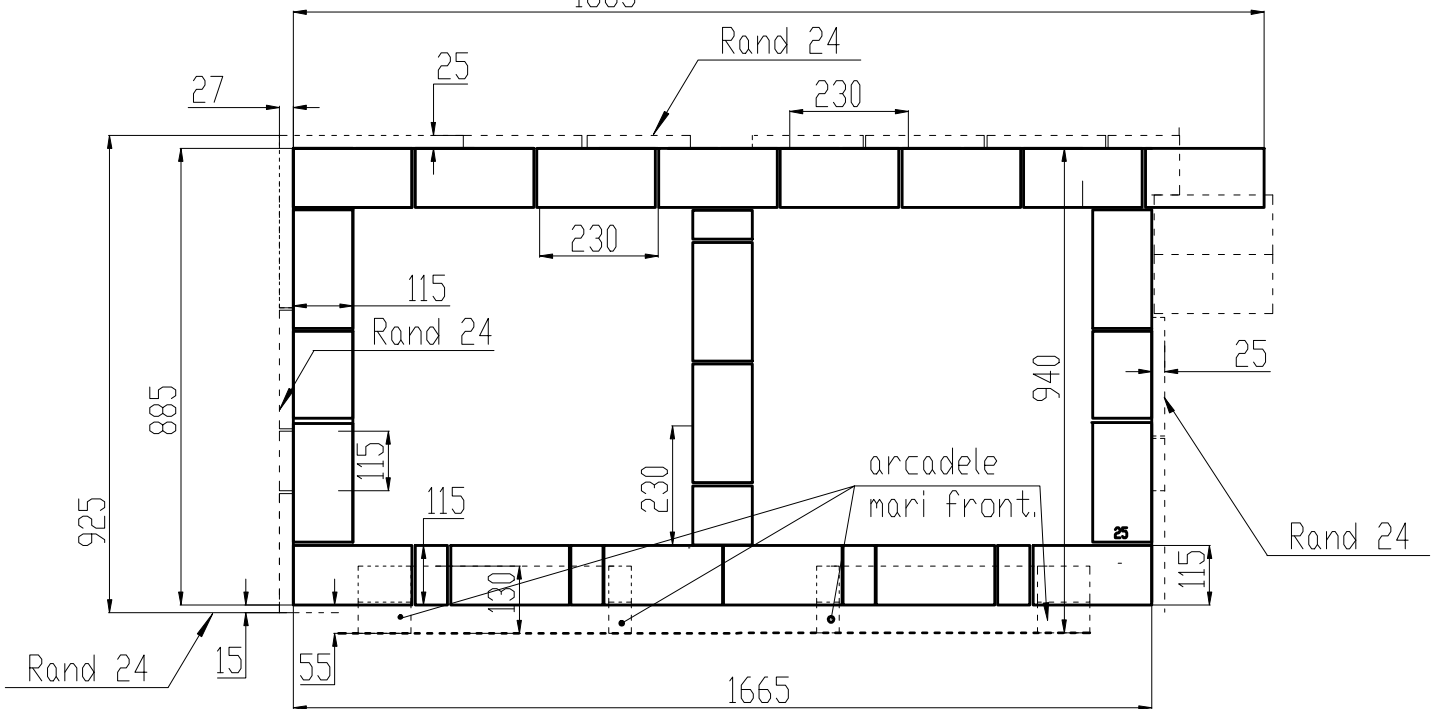
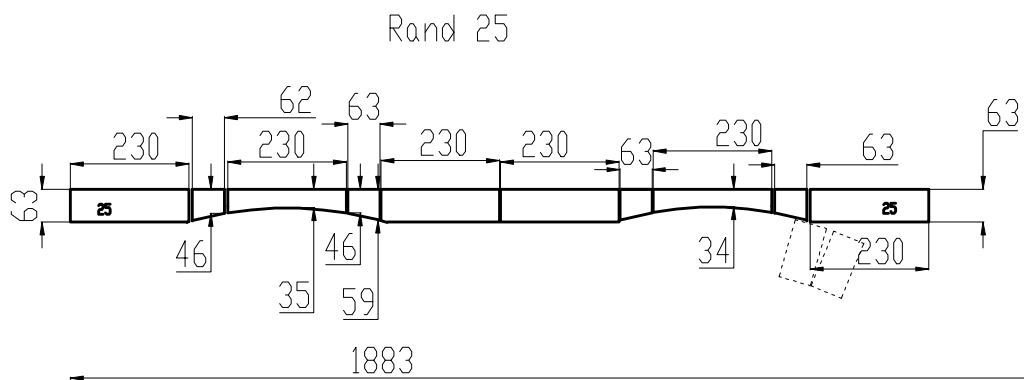
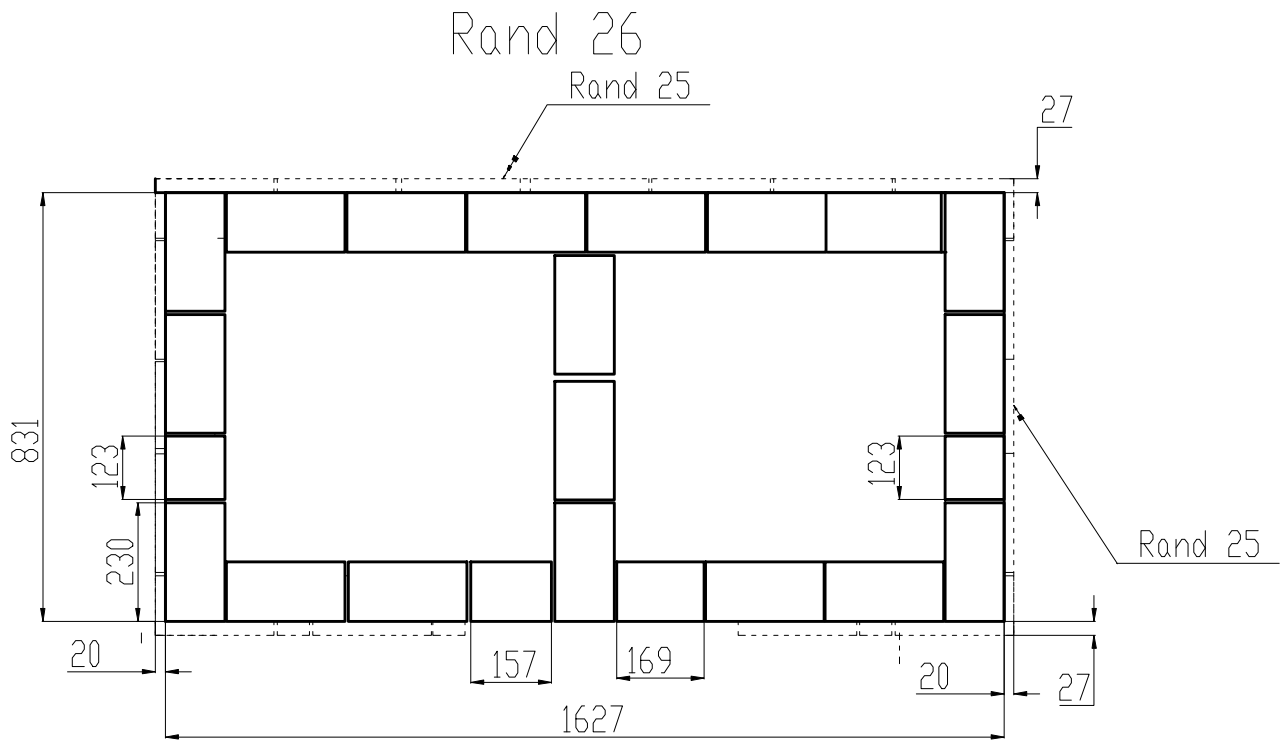


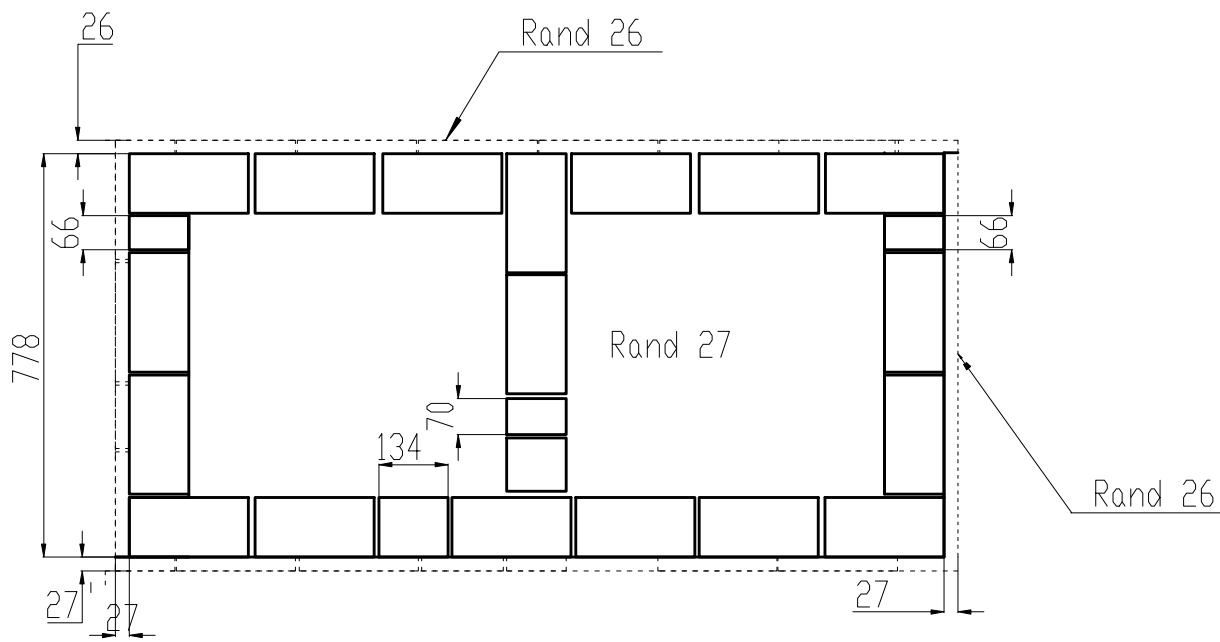
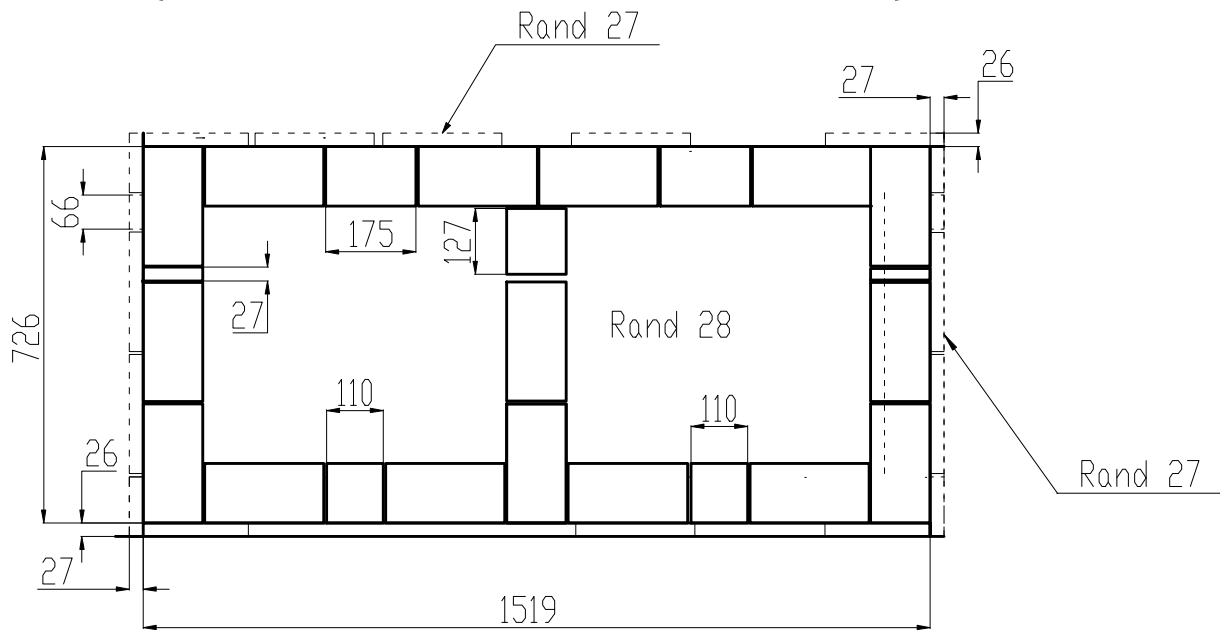
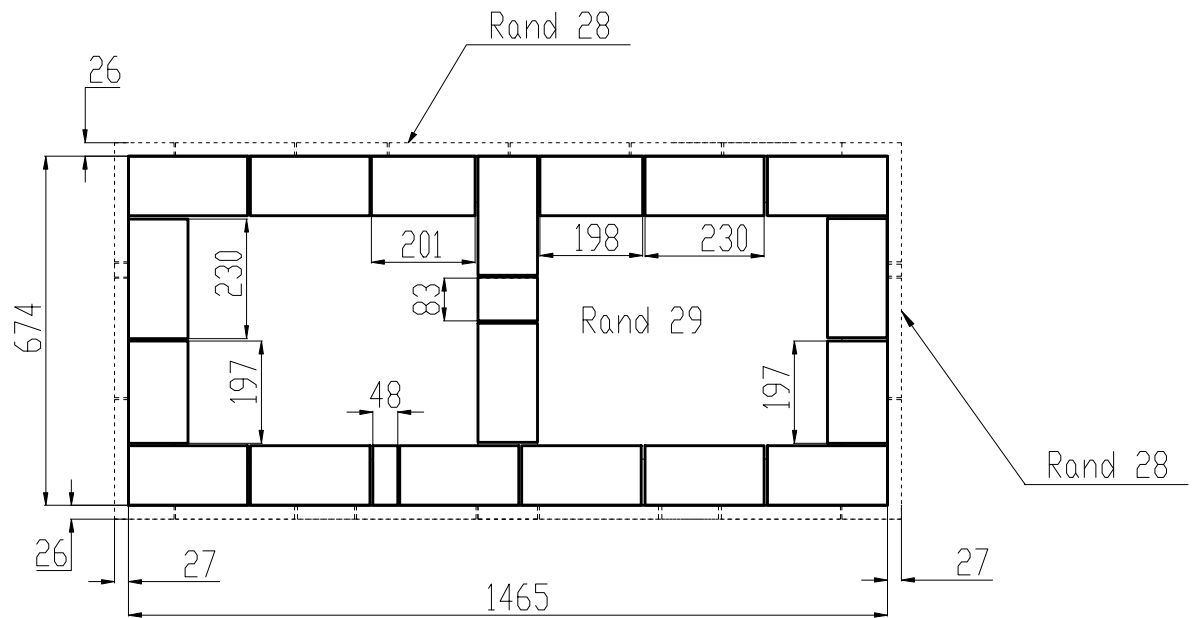
2 buc.

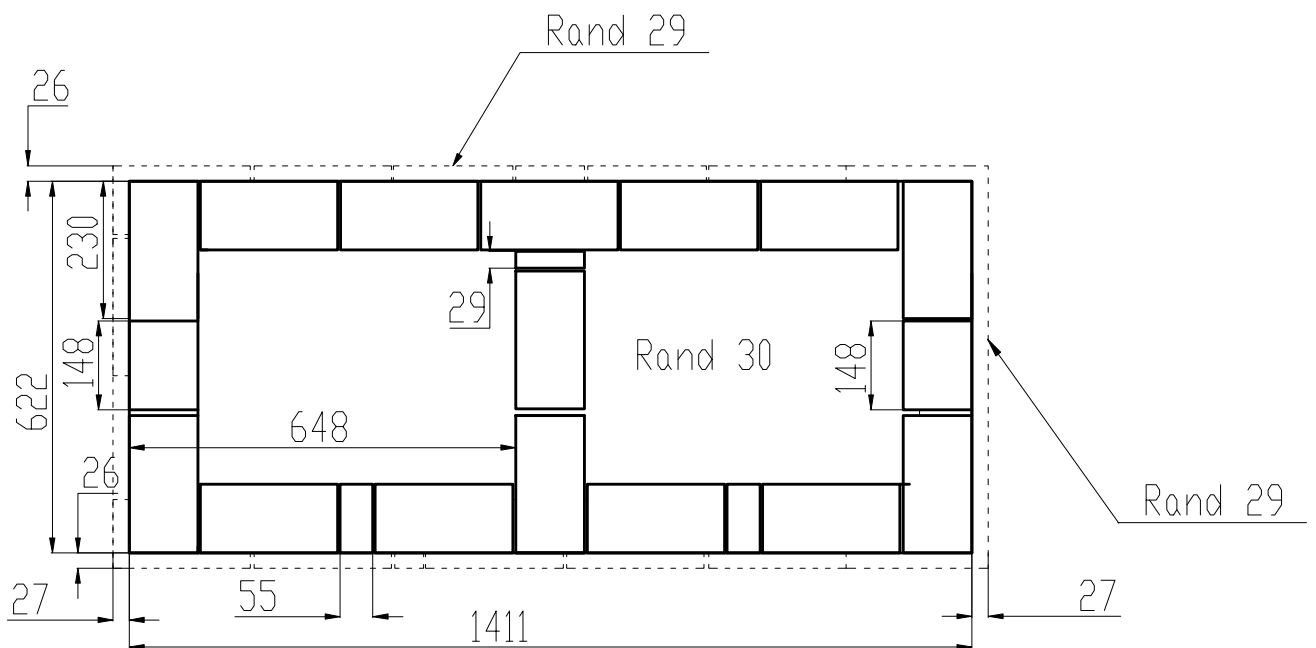
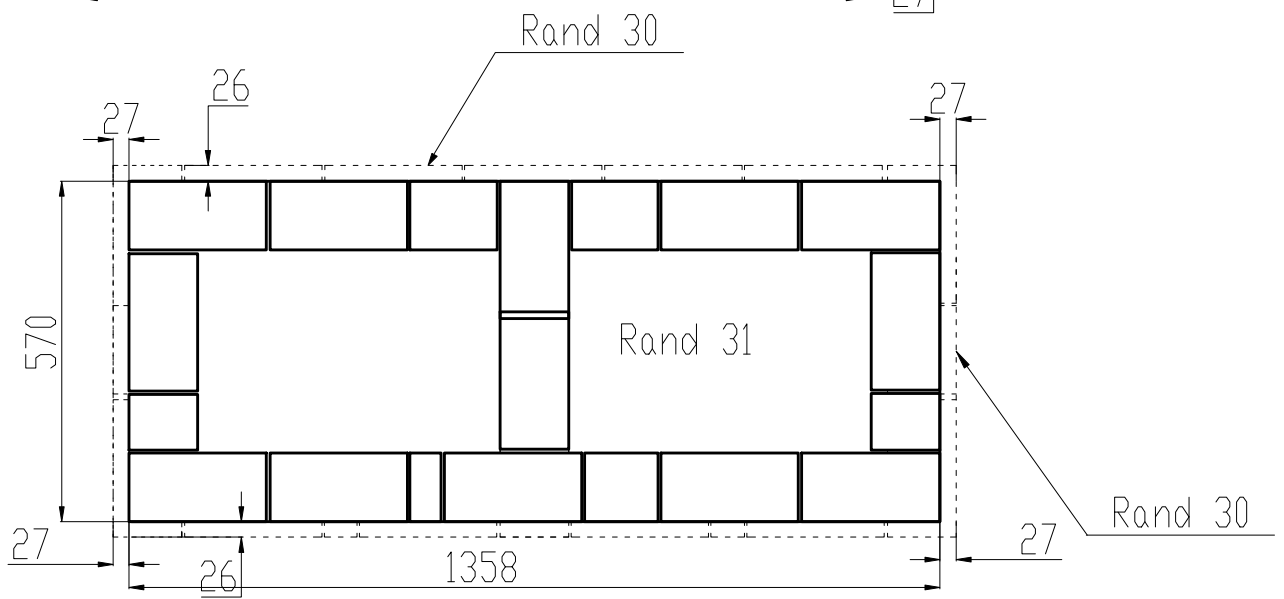
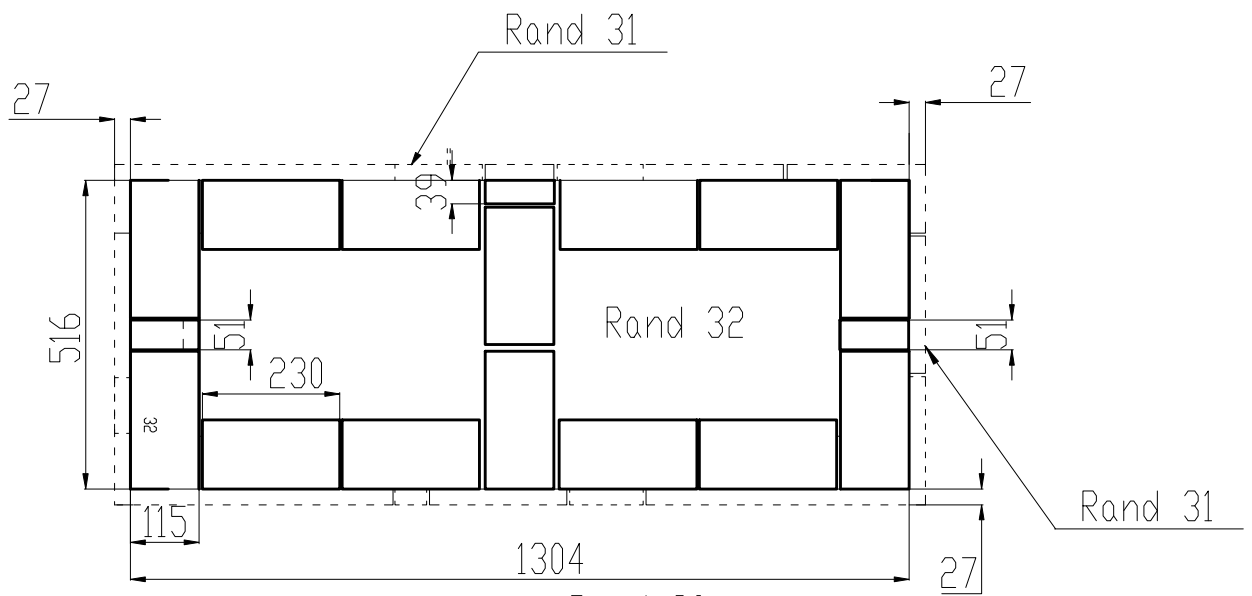


# Randul 24

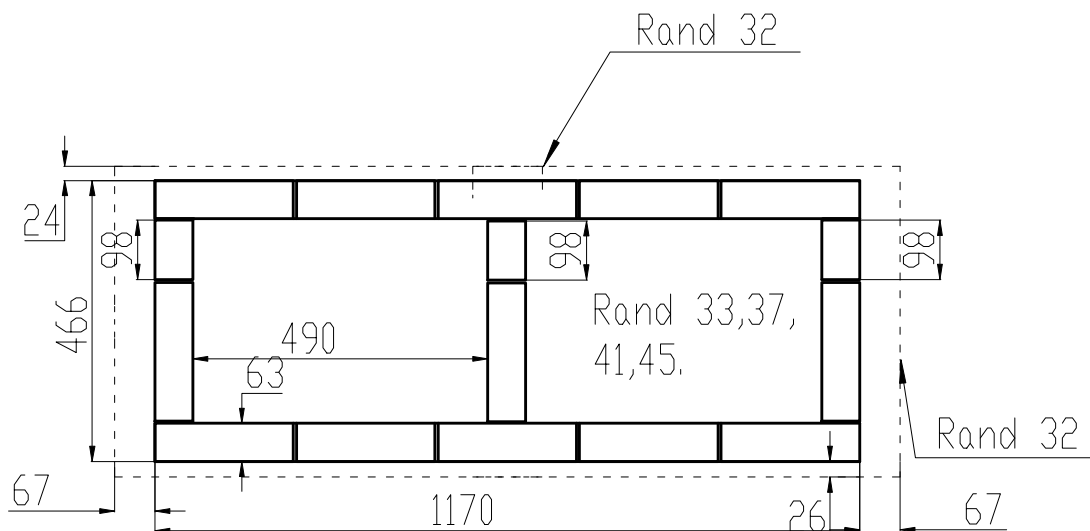
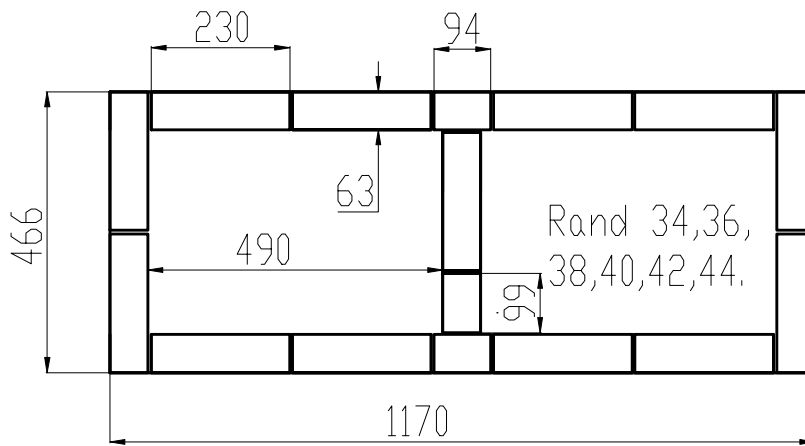
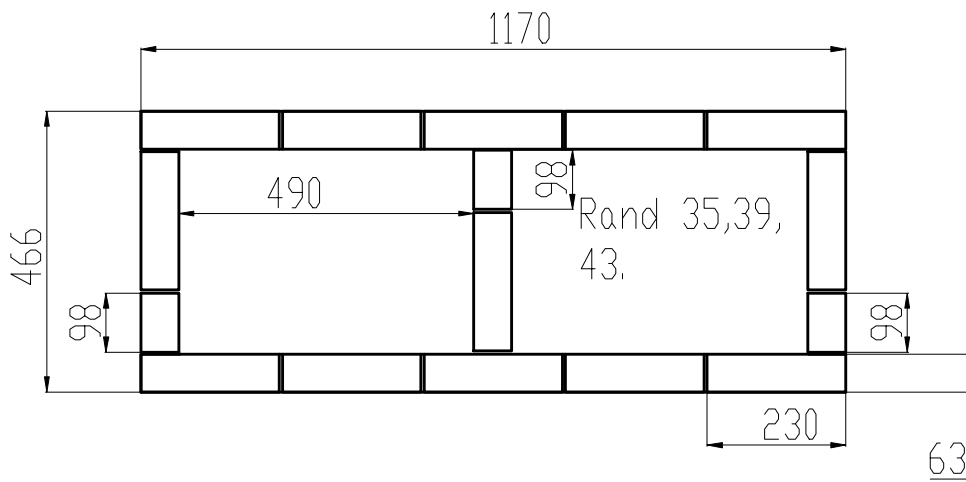
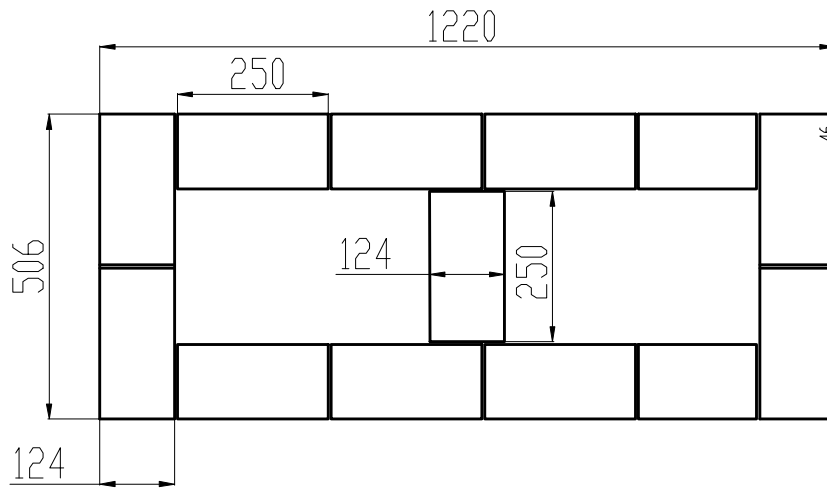












Lista de caramizi varianta 2  
Cuptor+grill+plita

Caramizi P63 (230x115x63)

Nr. rand	Nr. caramizi
1	80
2	42
3	27
4	31
5	36
6	31
7	30
8	56
9	36
10	37
11	32
12	47
13	65
14	36
15	34
16	52
17	48
18	37
19	47
20	41
21	32
22	55
23	32
24	36
25	30
26	23
27	25
28	23
29	19
30	18
31	17
32	14
33	135
34	14
35	145
36	14
37	135
38	14
39	145
40	14
41	135
42	14
43	145
44	14
45	145

Total 1352 buc.

Caramizi R-28 AS

Nr. rand	Nr. caramizi
13	18
16	7
2	25
19	33

Total 84

Caramizi 2R-28 AS

Nr. rand	Nr. caramizi
46	13

Total 12 buc.

Caramizi R32-28 AS

Nr. rand	Nr. caramizi
17	26
19	4
Total	30 buc.