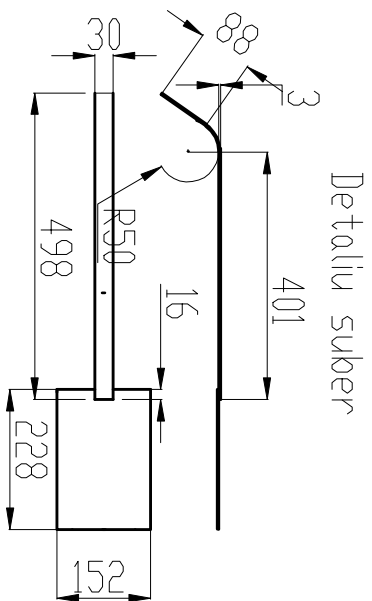


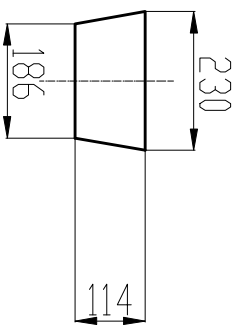


# Construcția arcadei interioare și a suberului

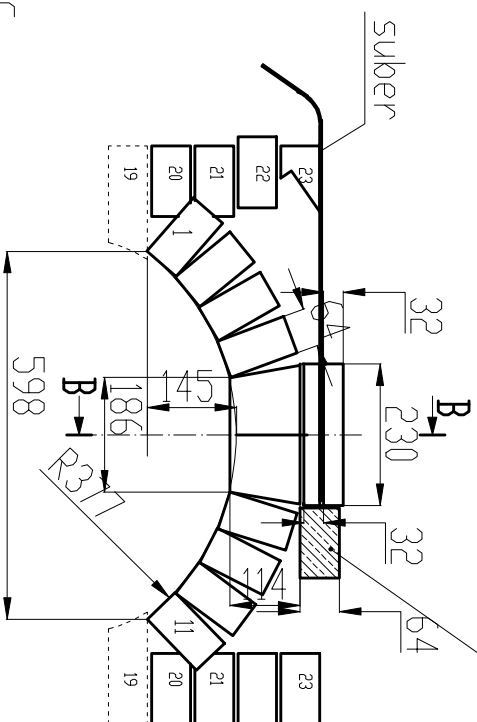
Randul 20



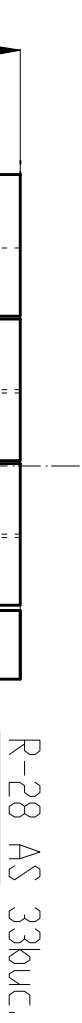
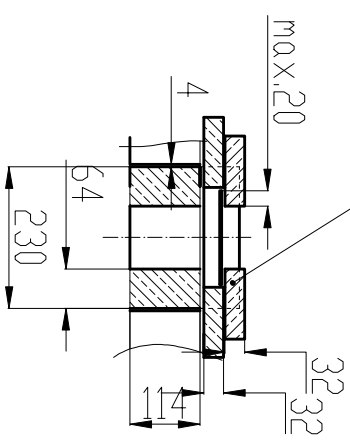
Caramida R-28 AS 2buc.



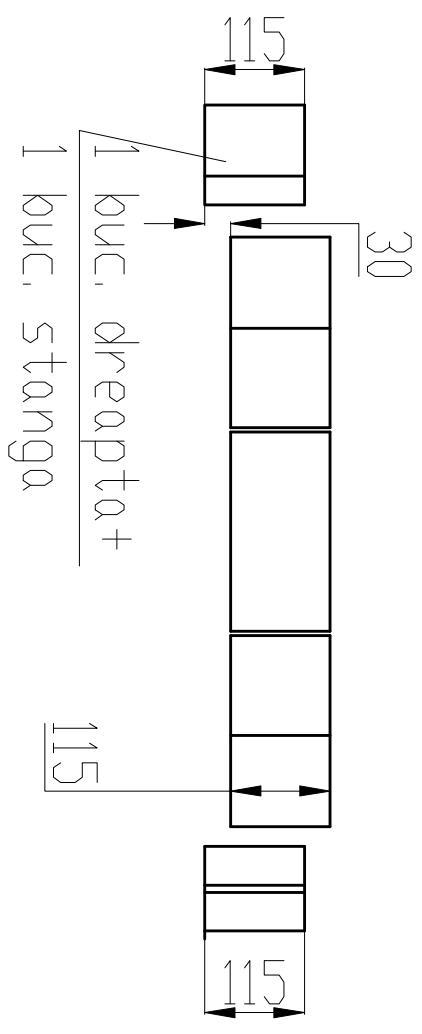
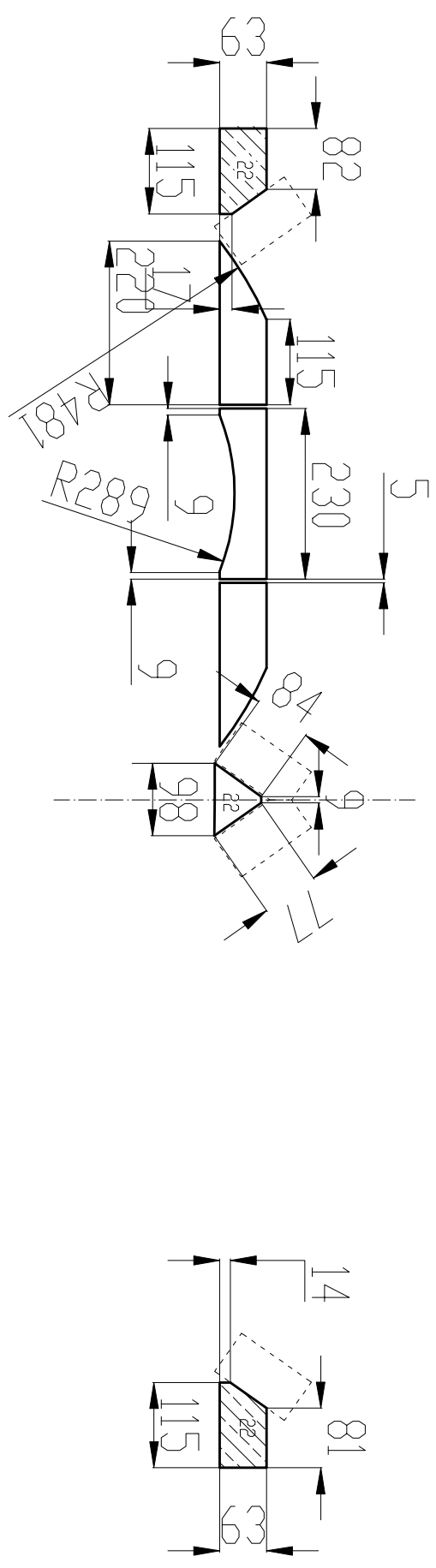
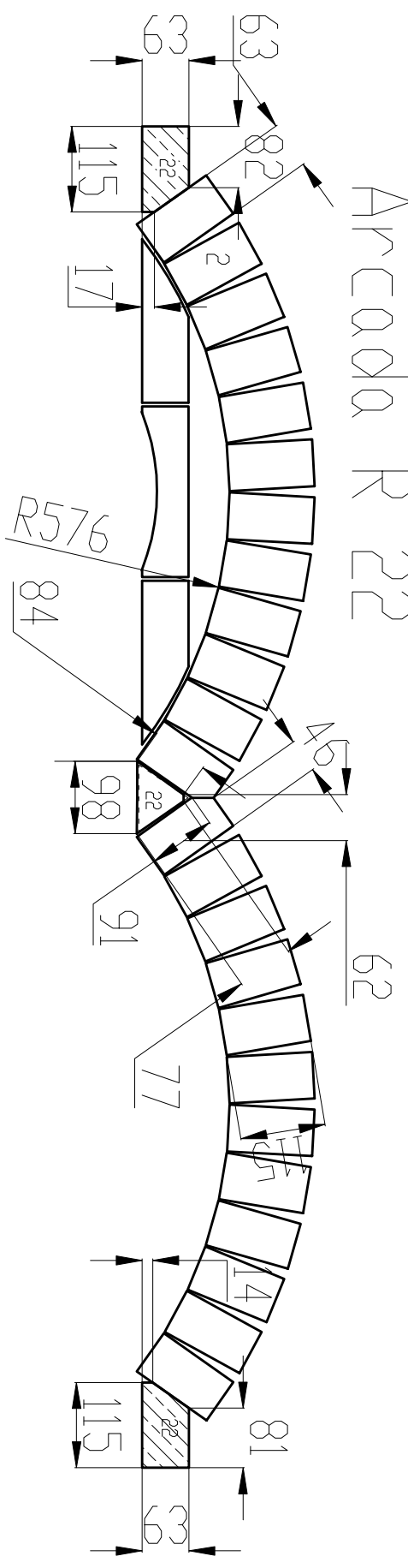
A-A R-28 AS 1buc.



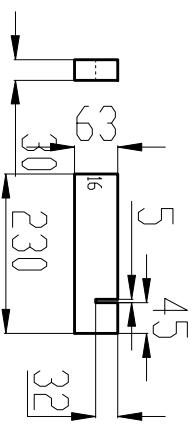
B-B R 32-28AS 4buc.



# ARCOADA R 22

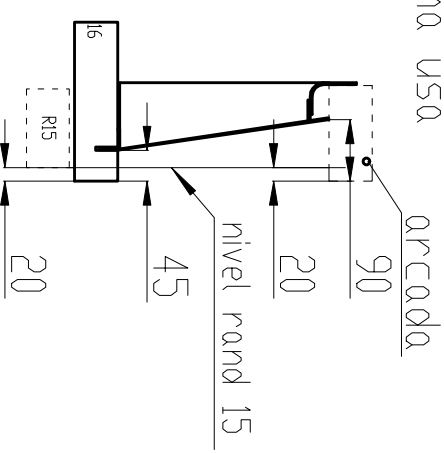
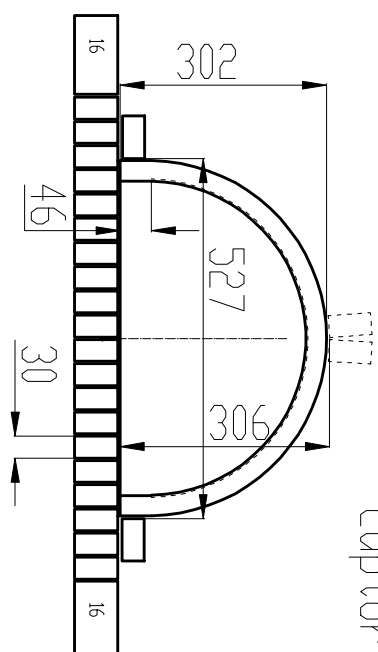


Taiere caramizi sub  
rama usii 20 buc.



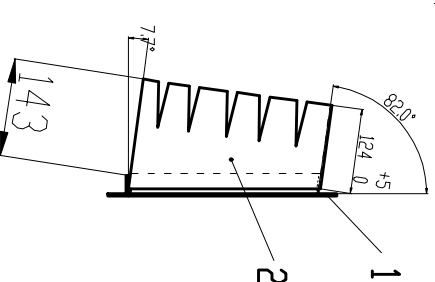
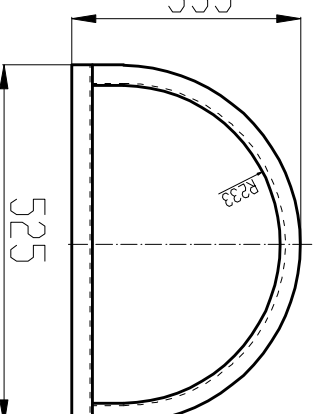
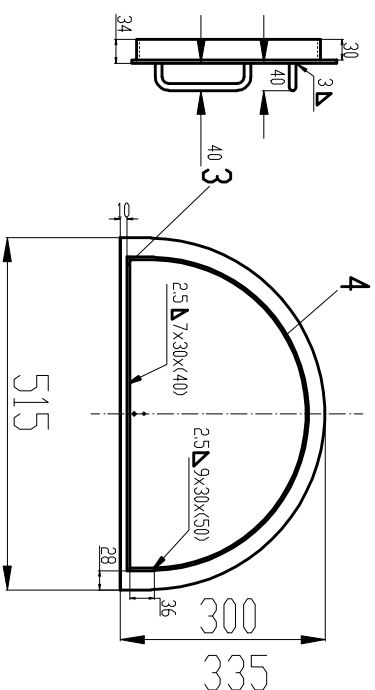
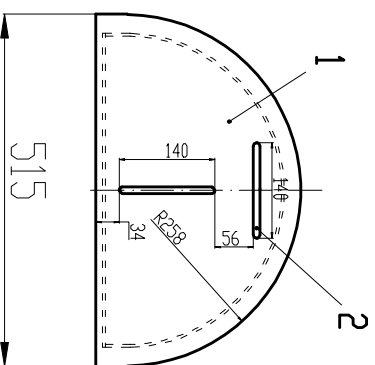
Se taie din caramida R-28 AS, dar  
numai din zona ramei (cota 525)

Detalii montaj rama usa  
cuptor pizza

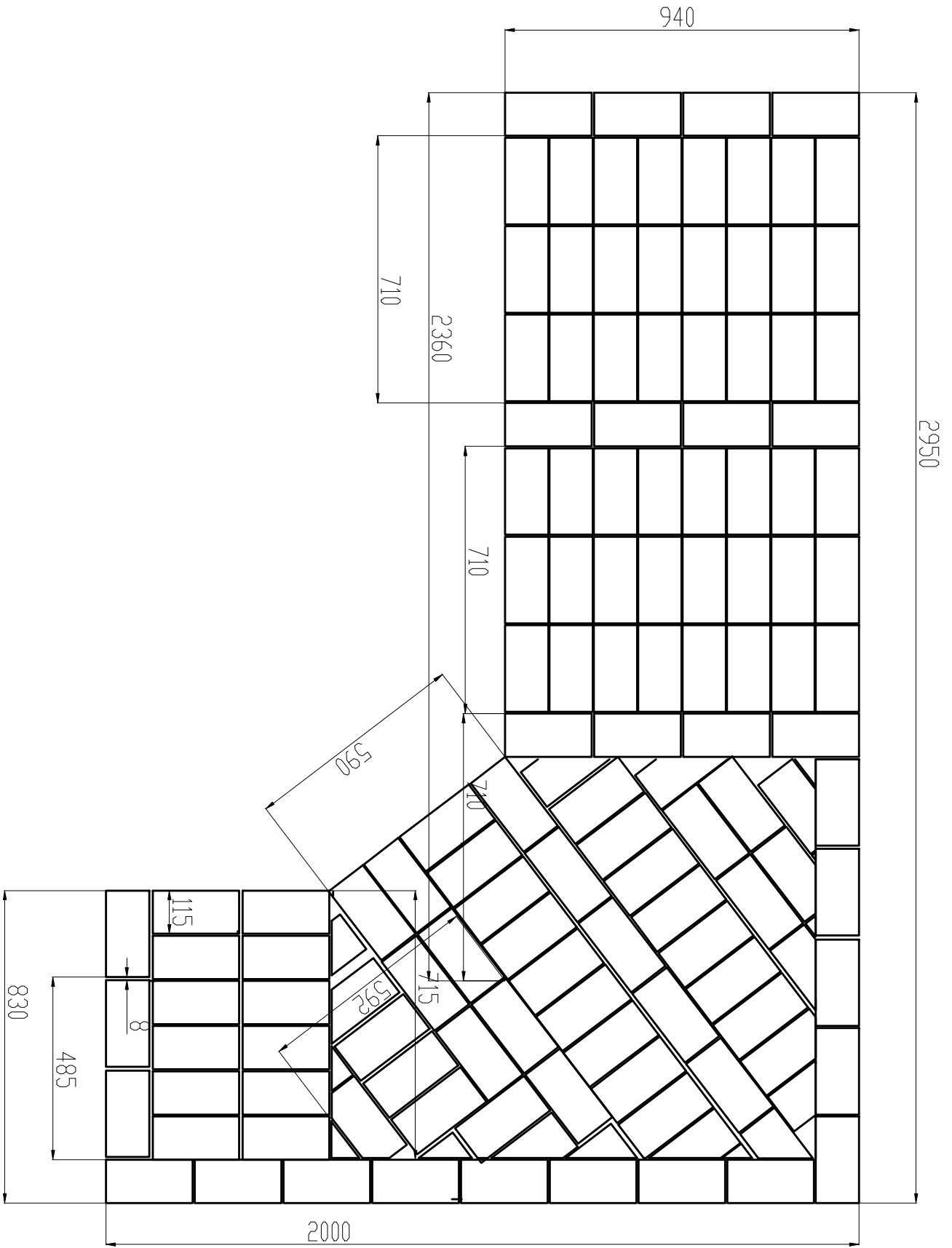


ANSAMBLU USA

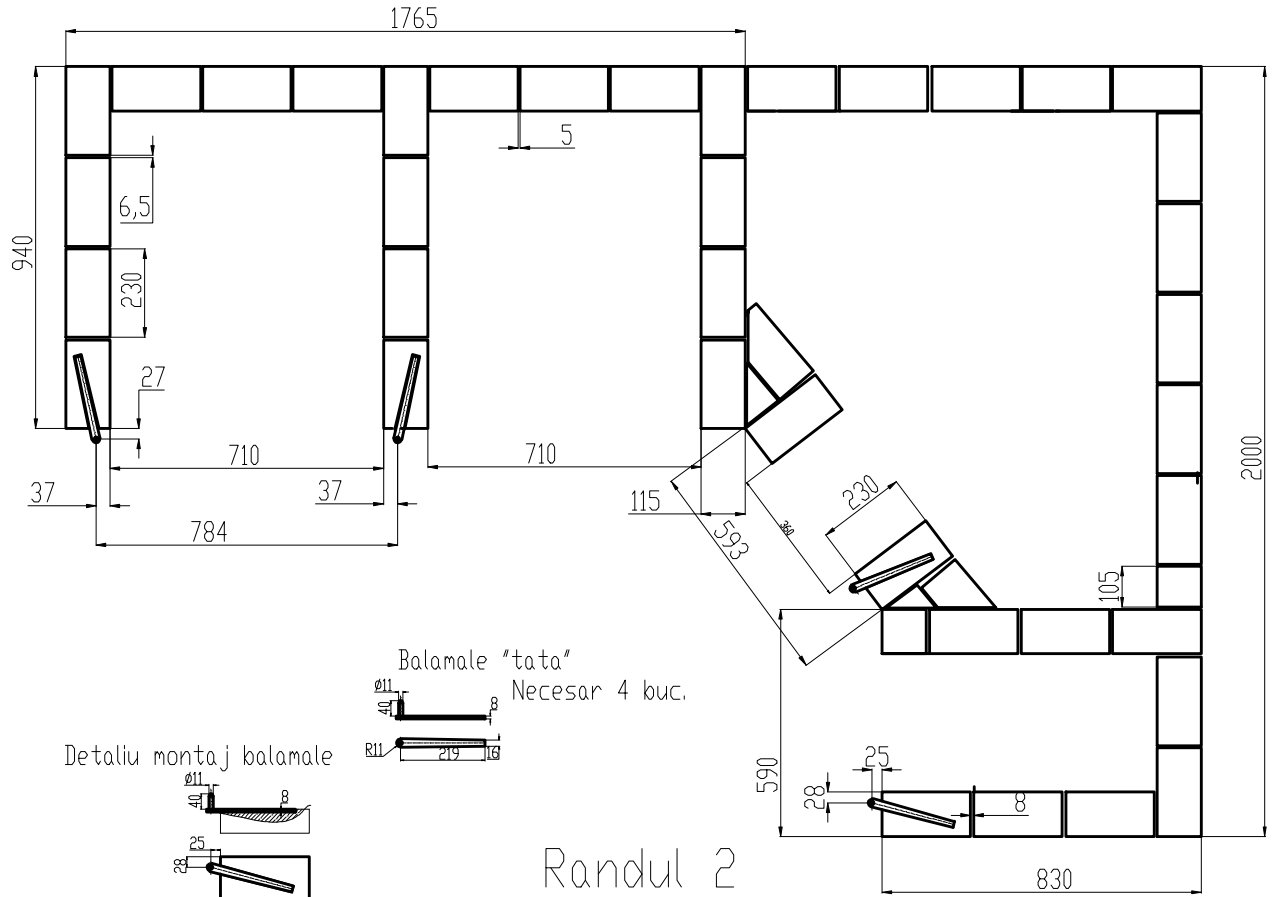
ANSAMBLU RAMA



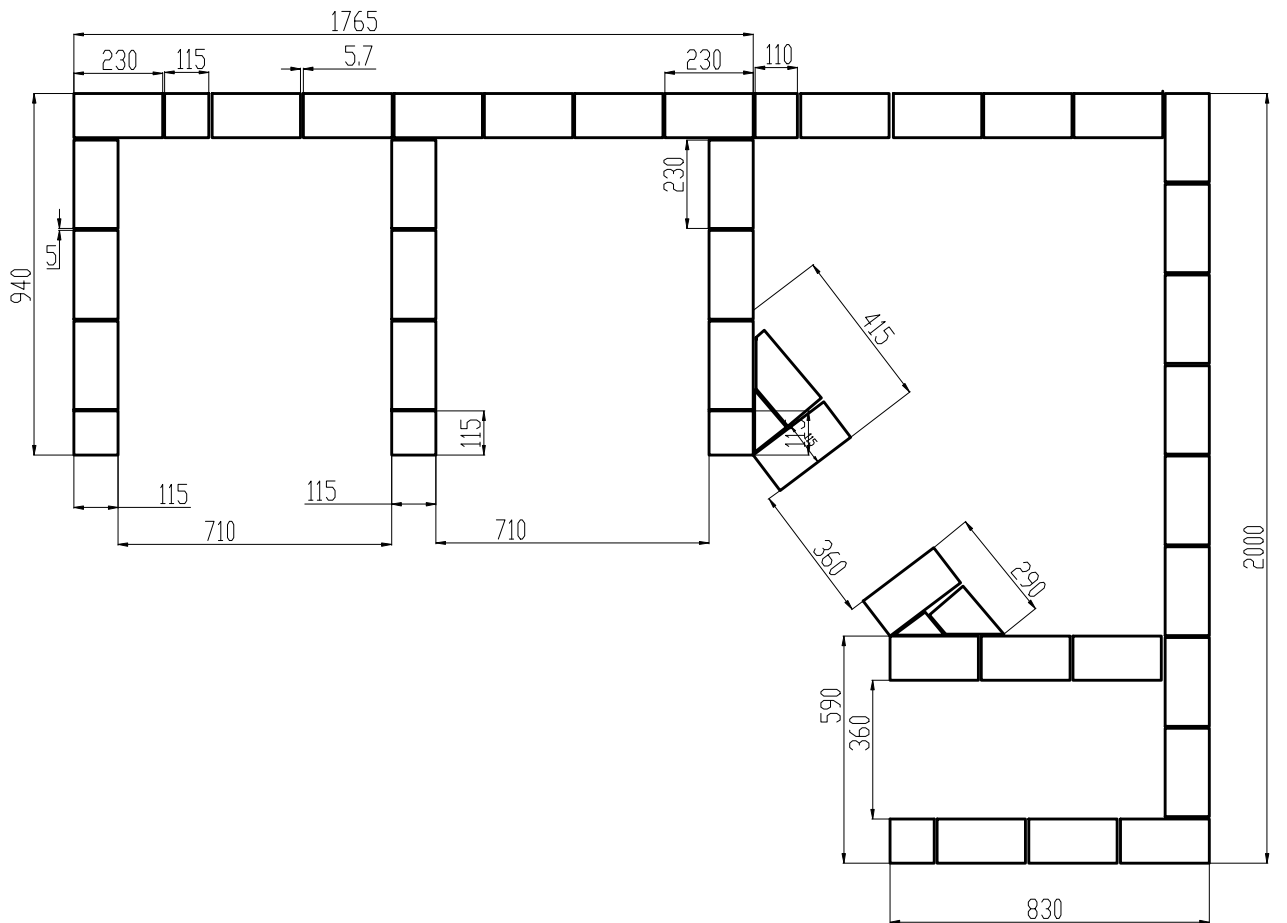
RAND 1



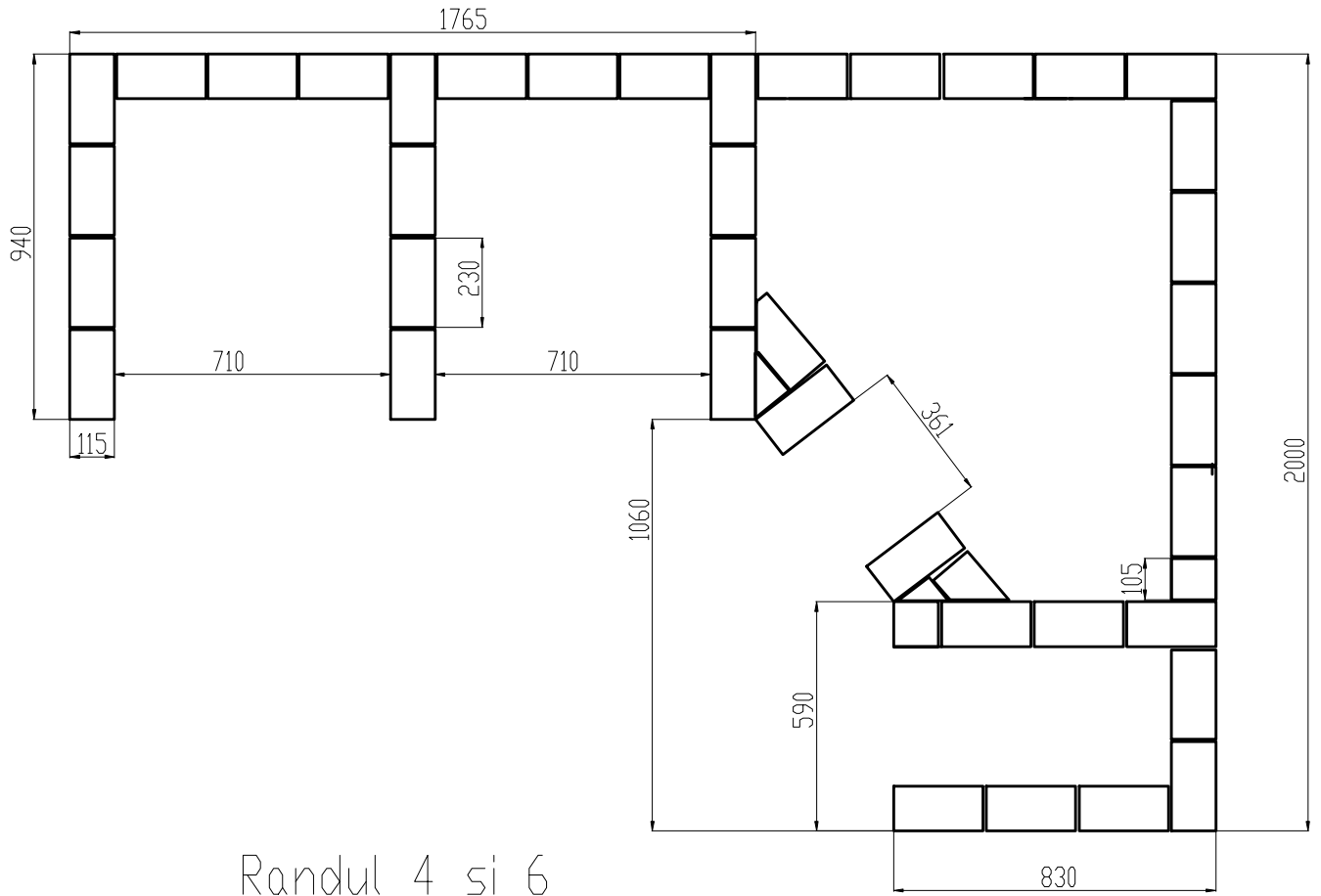
# Randul 3



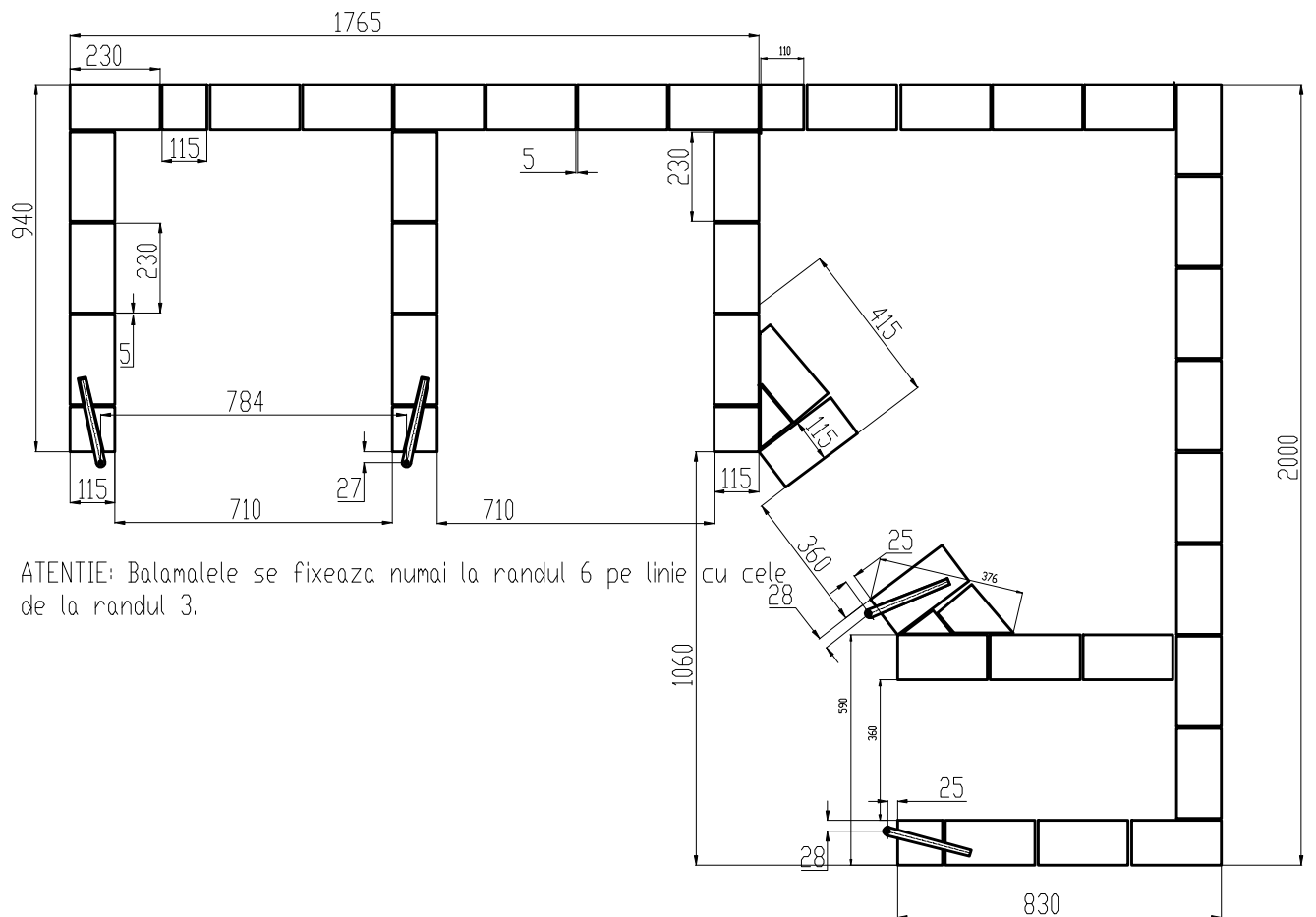
# Randul 2



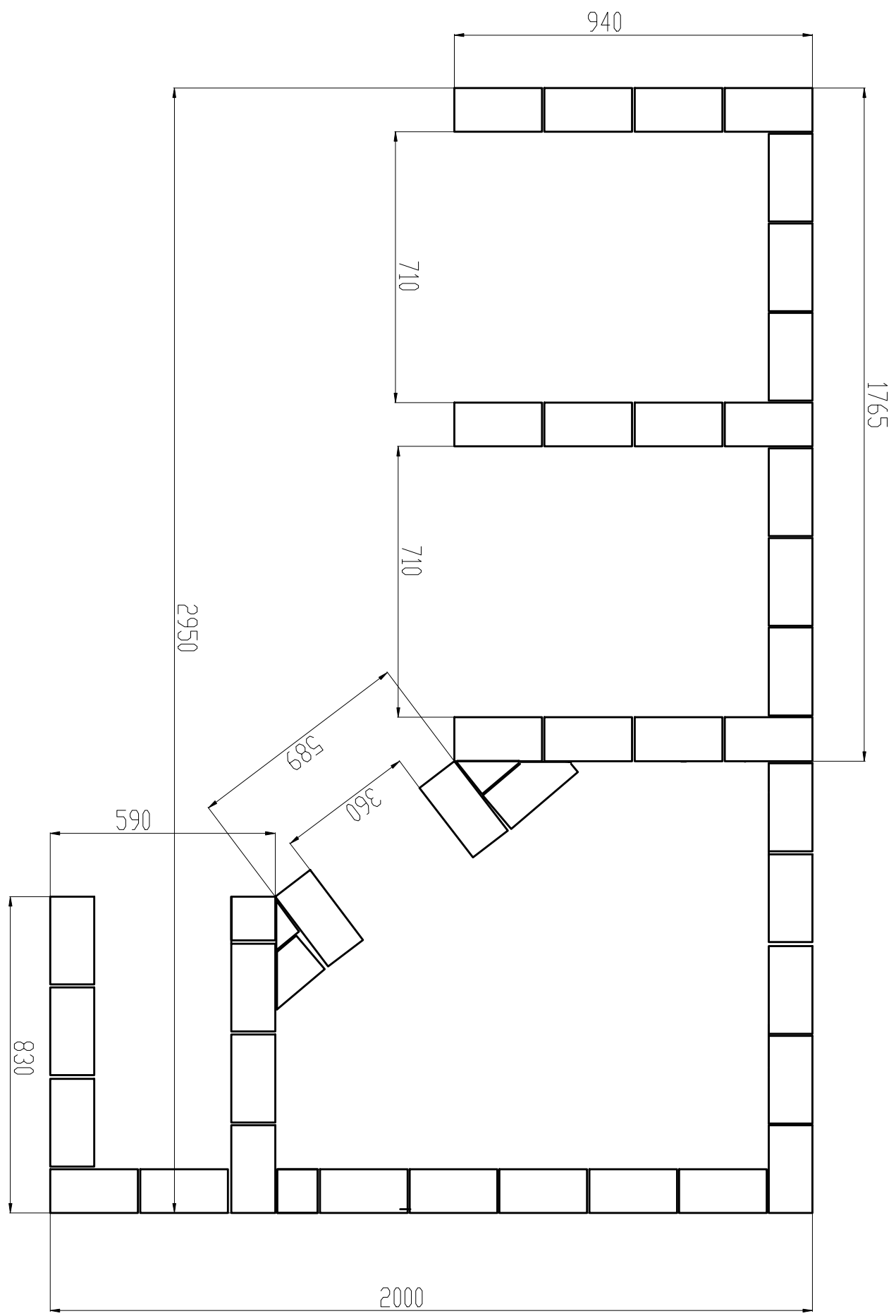
Randul 5 (idem 3 fara  
balamale)



Randul 4 si 6



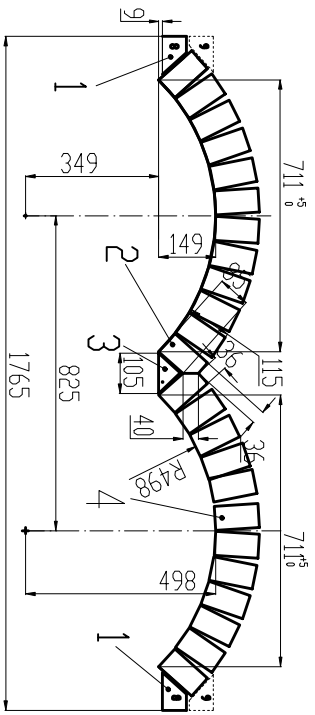
Randuk 7 (idem 5)



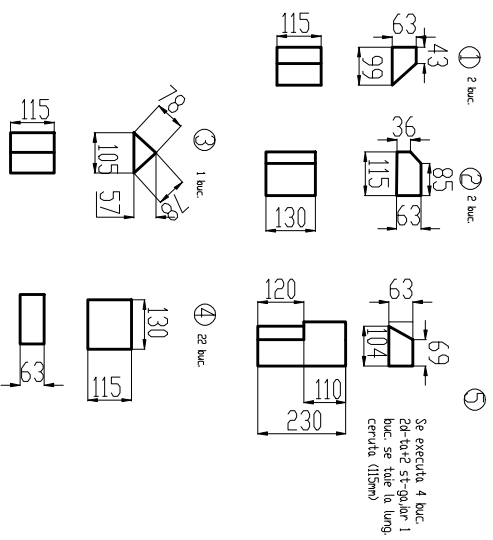


Construcția arcadelor la R8

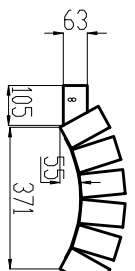
Vedere din A



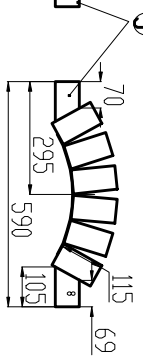
Caranizi taiate R8



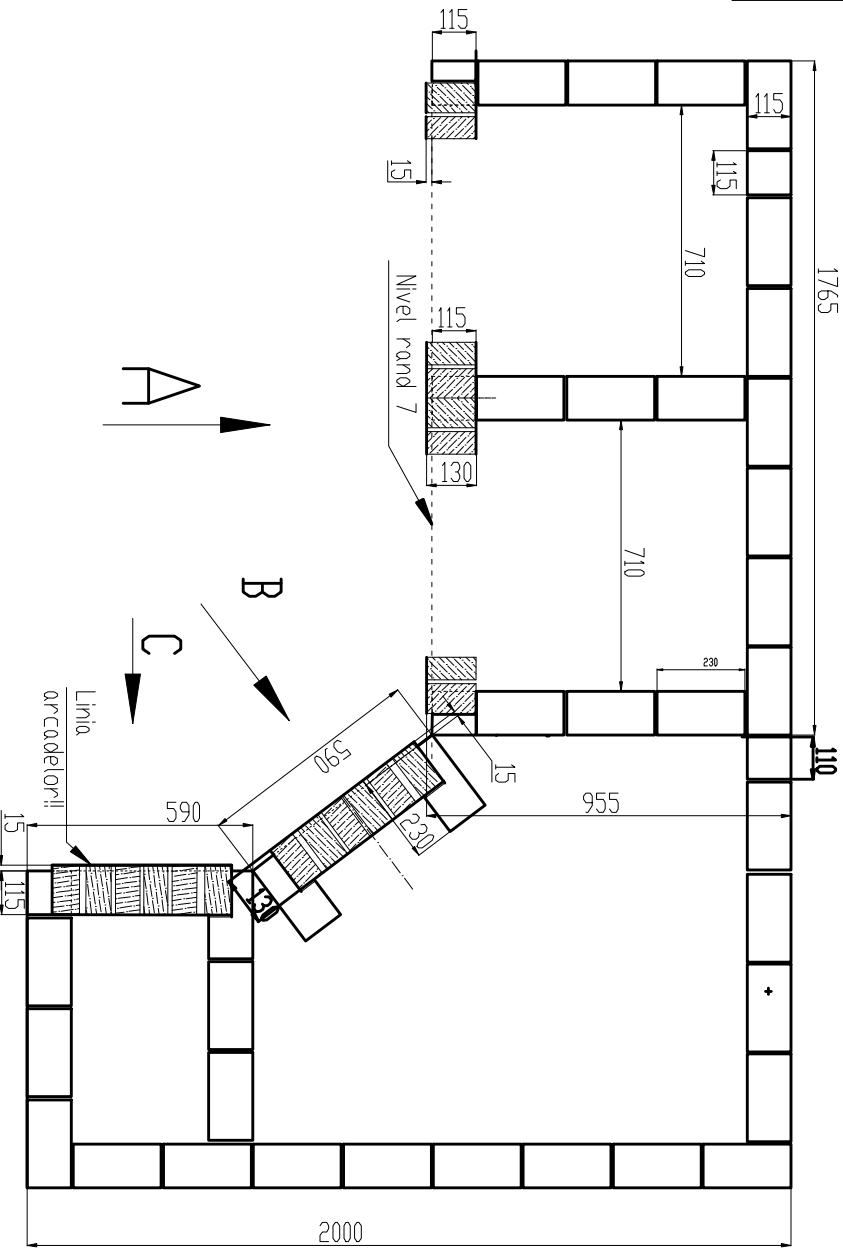
Arcaada.  
Vedere din B



Arcaada.  
Vedere din C

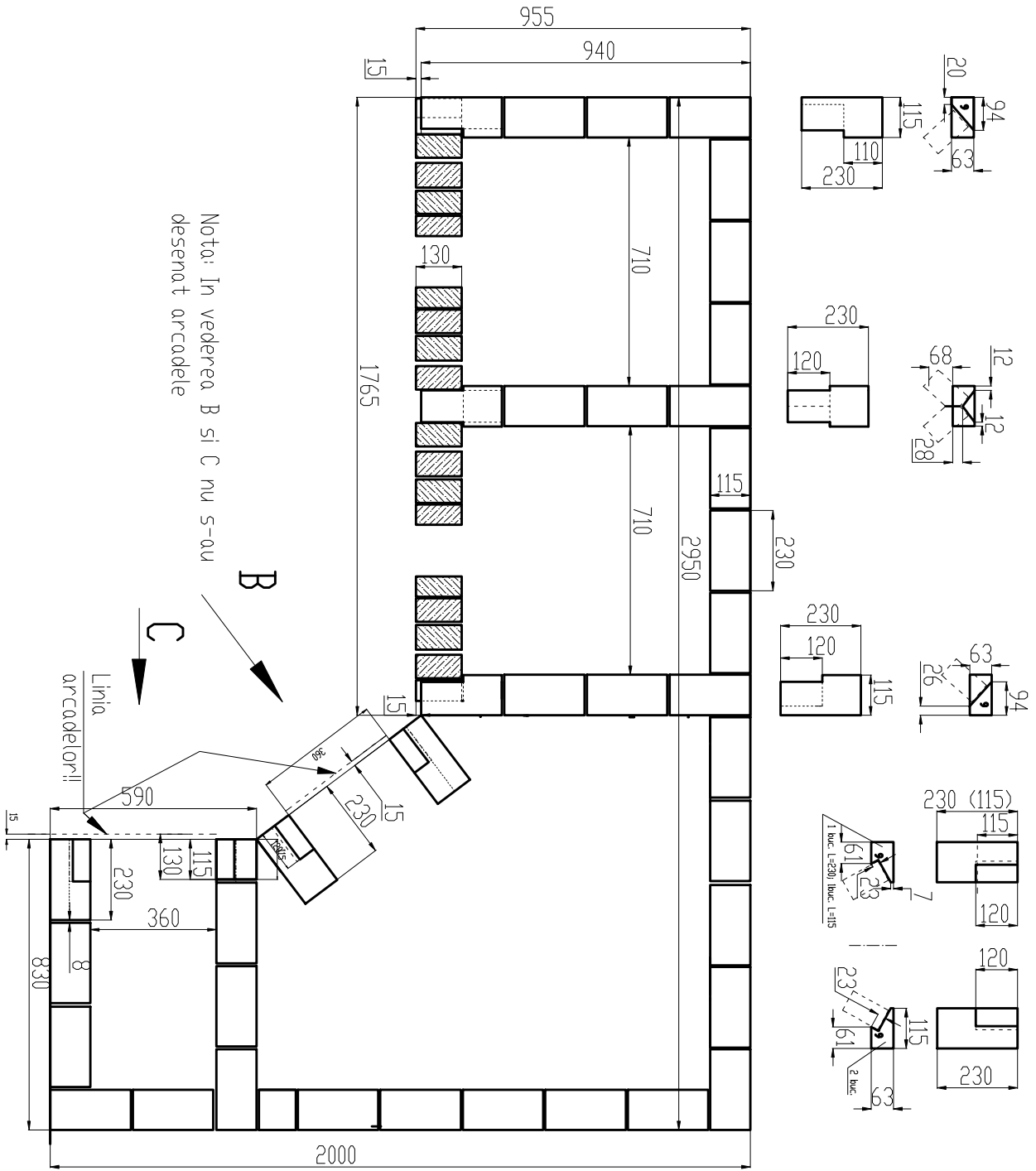


Randul 8



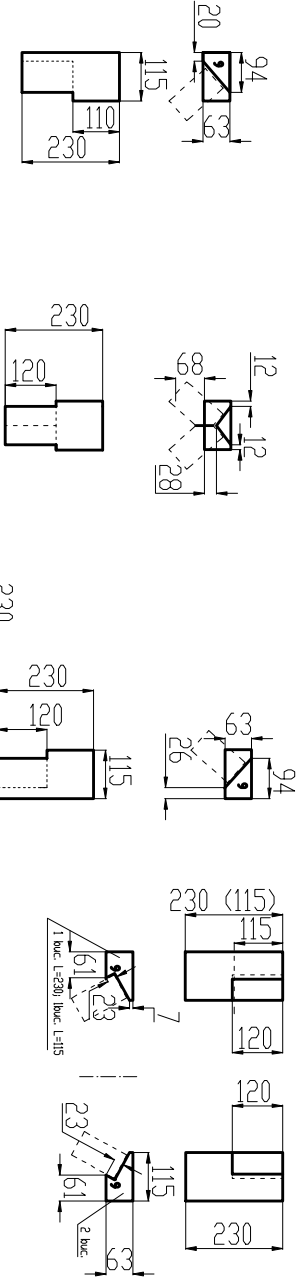
# Randul 9

Caramizile prelucrate la R9

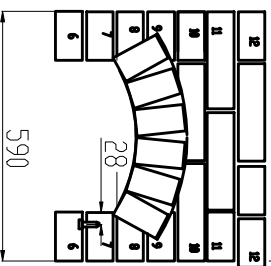


Nota: In vederea B si C nu s-au desenat arcadele

Vedere din B si C



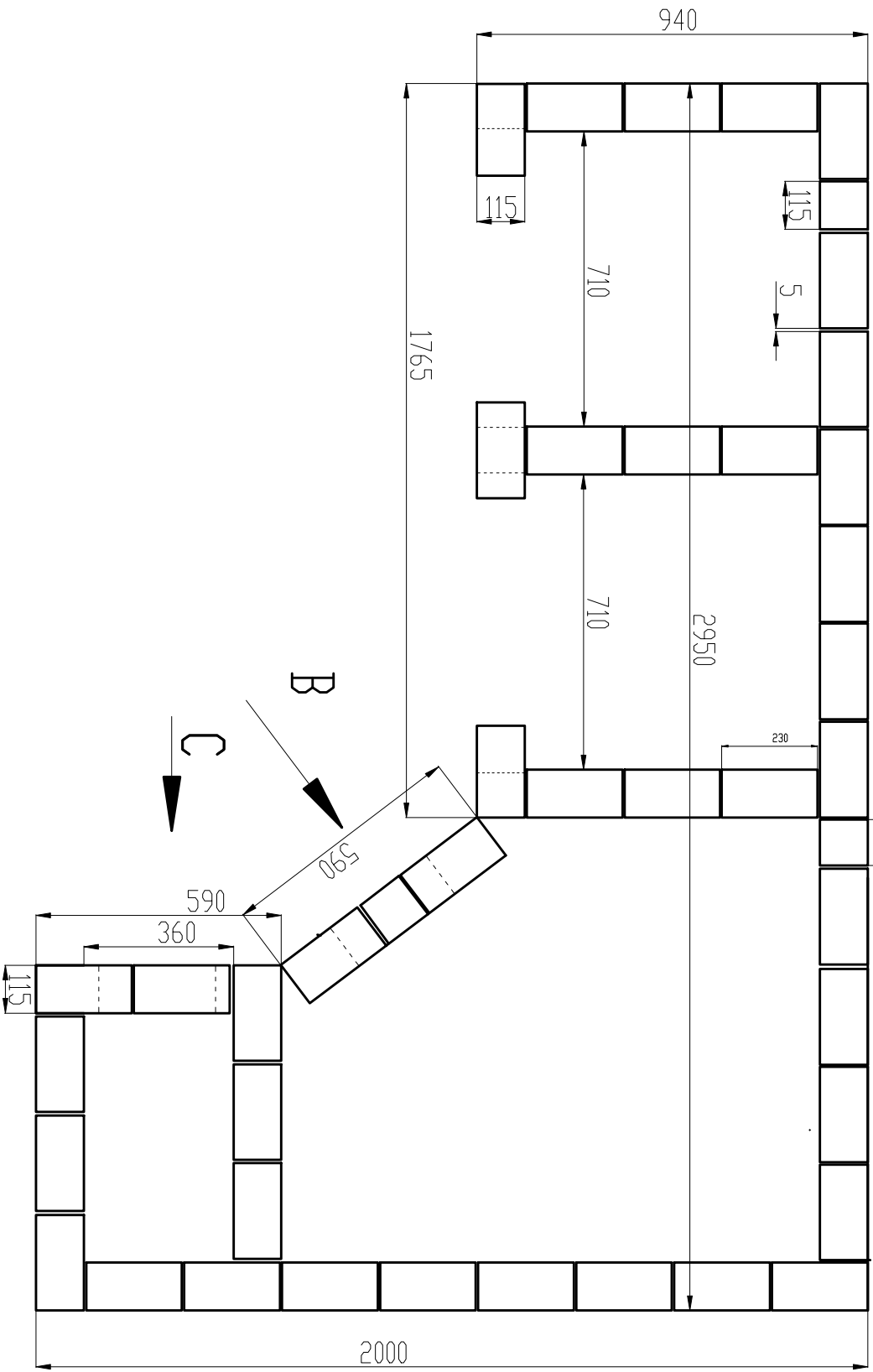
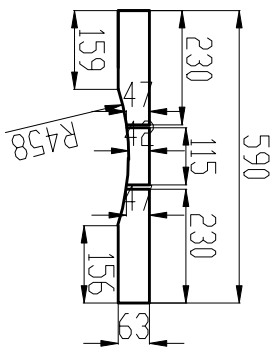
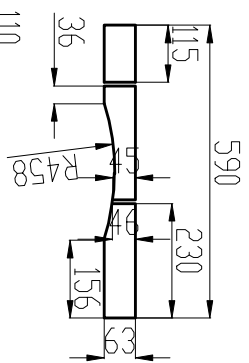
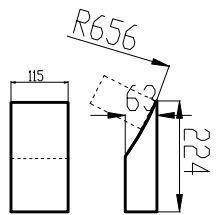
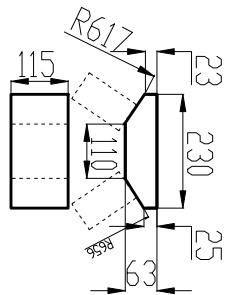
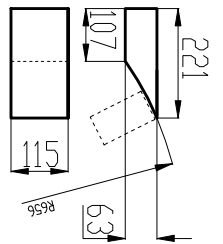
Vedere din B si C

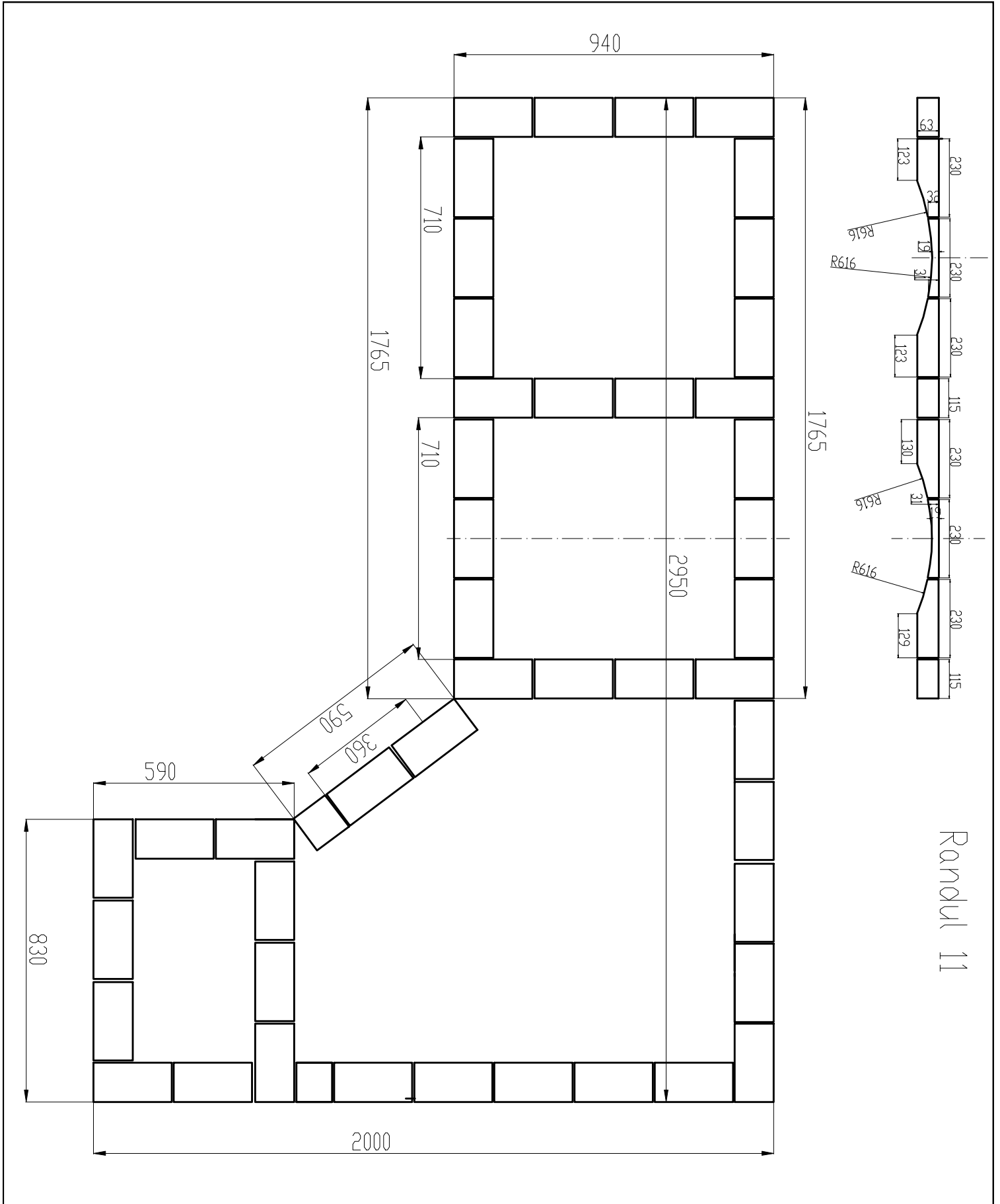


# Randul 10 (fara arcade)

Vedere din C

Vedere din B

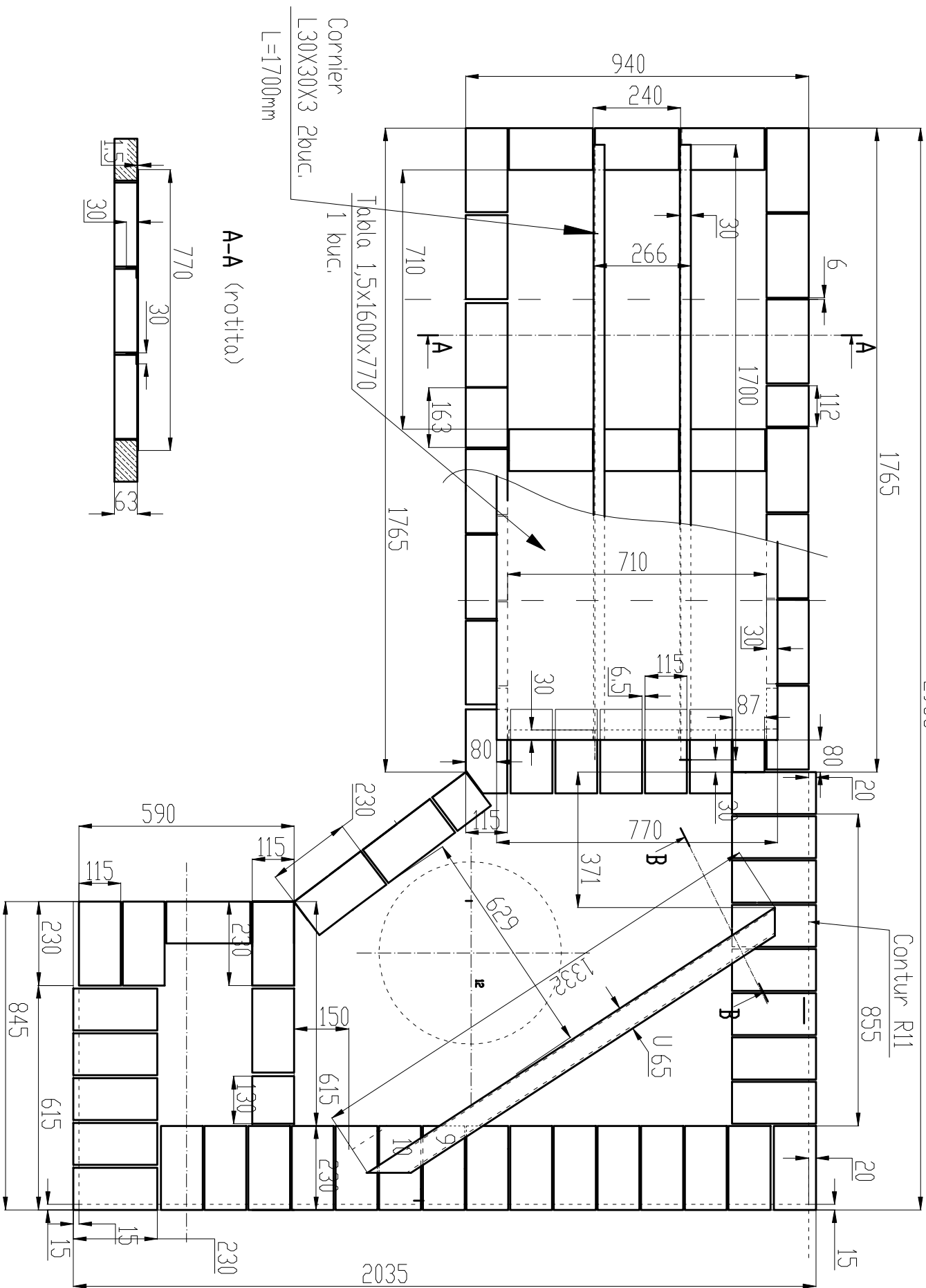




Ranoul 11

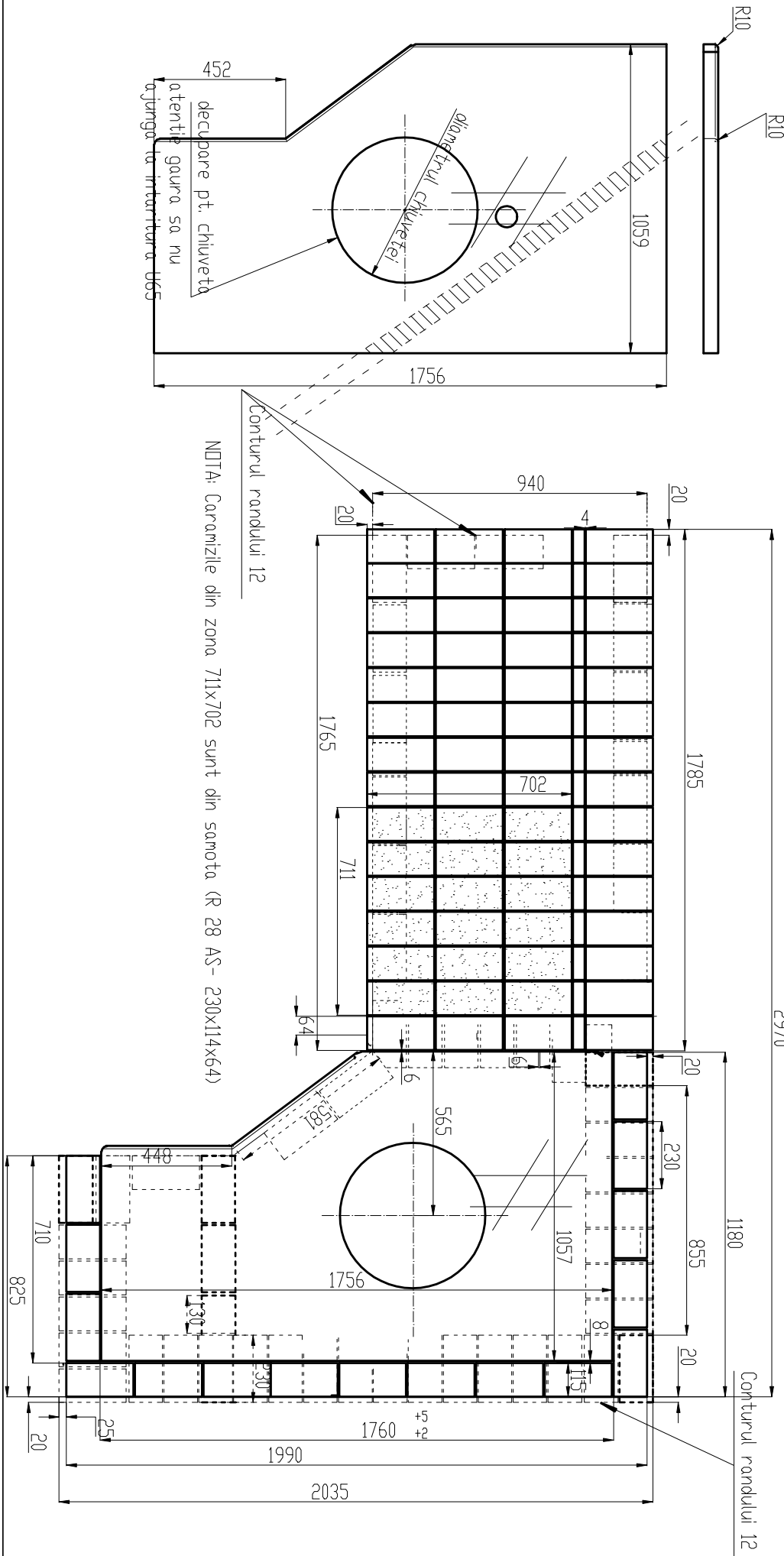
# Randui 12

2965



Pentru confecționarea plăcii de marmură se execută soluția după zidărie și se lasă o margine după preferință.

### Randul 13



NOTA: Cararizile din zona 711x702 sunt din samota (R 28 AS- 230x114x64)

Conturul randului 12

Conturul randului 12

452  
decupare pt. chiuveta  
atenție gaura sa nu  
ajunga la intrarea

diametrul chiuvetei

R10

R10

2970

20

1785

940

20

4

702

1765

711

64

20

1180

Conturul randului 12

565

1756

1760

+5  
+2

1990

2035

448

710

825

20

25

130

230

115

8

20

230

115

8

20

230

115

8

20

230

115

8

20

230

115

8

20

230

115

8

20

230

115

8

20

230

115

8

20

230

115

8

20

230

115

8

20

230

115

8

20

230

115

8

20

230

115

8

20

230

115

8

20

230

115

8

20

230

115

8

20

230

115

8

20

230

115

8

20

230

115

8

20

230

115

8

20

230

115

8

20

230

115

8

20

230

115

8

20

230

115

8

20

230

115

8

20

230

115

8

20

230

115

8

20

230

115

8

20

230

115

8

20

230

115

8

20

230

115

8

20

230

115

8

20

230

115

8

20

230

115

8

20

230

115

8

20

230

115

8

20

230

115

8

20

230

115

8

20

230

115

8

20

230

115

8

20

230

115

8

20

230

115

8

20

230

115

8

20

230

115

8

20

230

115

8

20

230

115

8

20

230

115

8

20

230

115

8

20

230

115

8

20

230

115

8

20

230

115

8

20

230

115

8

20

230

115

8

20

230

115

8

20

230

115

8

20

230

115

8

20

230

115

8

20

230

115

8

20

230

115

8

20

230

115

8

20

230

115

8

20

230

115

8

20

230

115

8

20

230

115

8

20

230

115

8

20

230

115

8

20

230

115

8

20

230

115

8

20

230

115

8

20

230

115

8

20

230

115

8

20

230

115

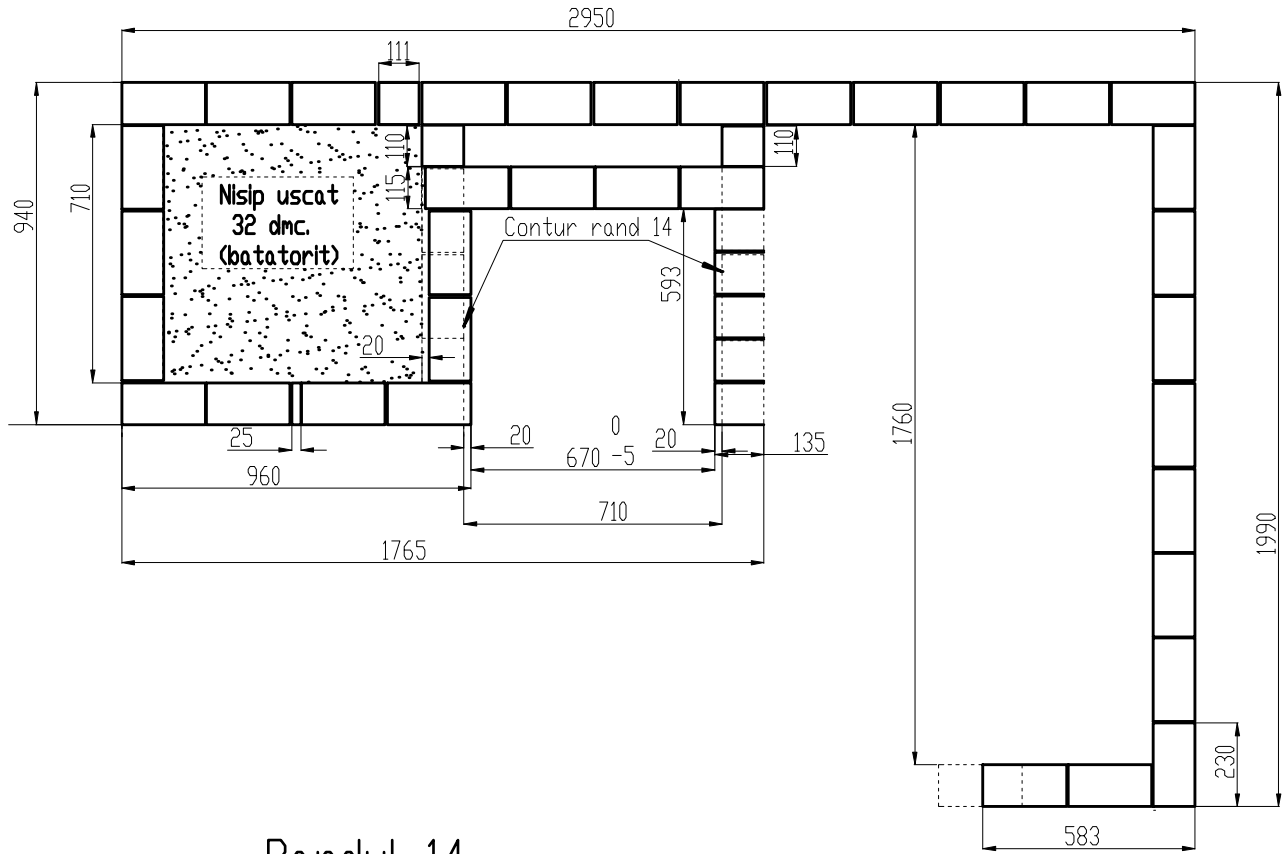
8

20

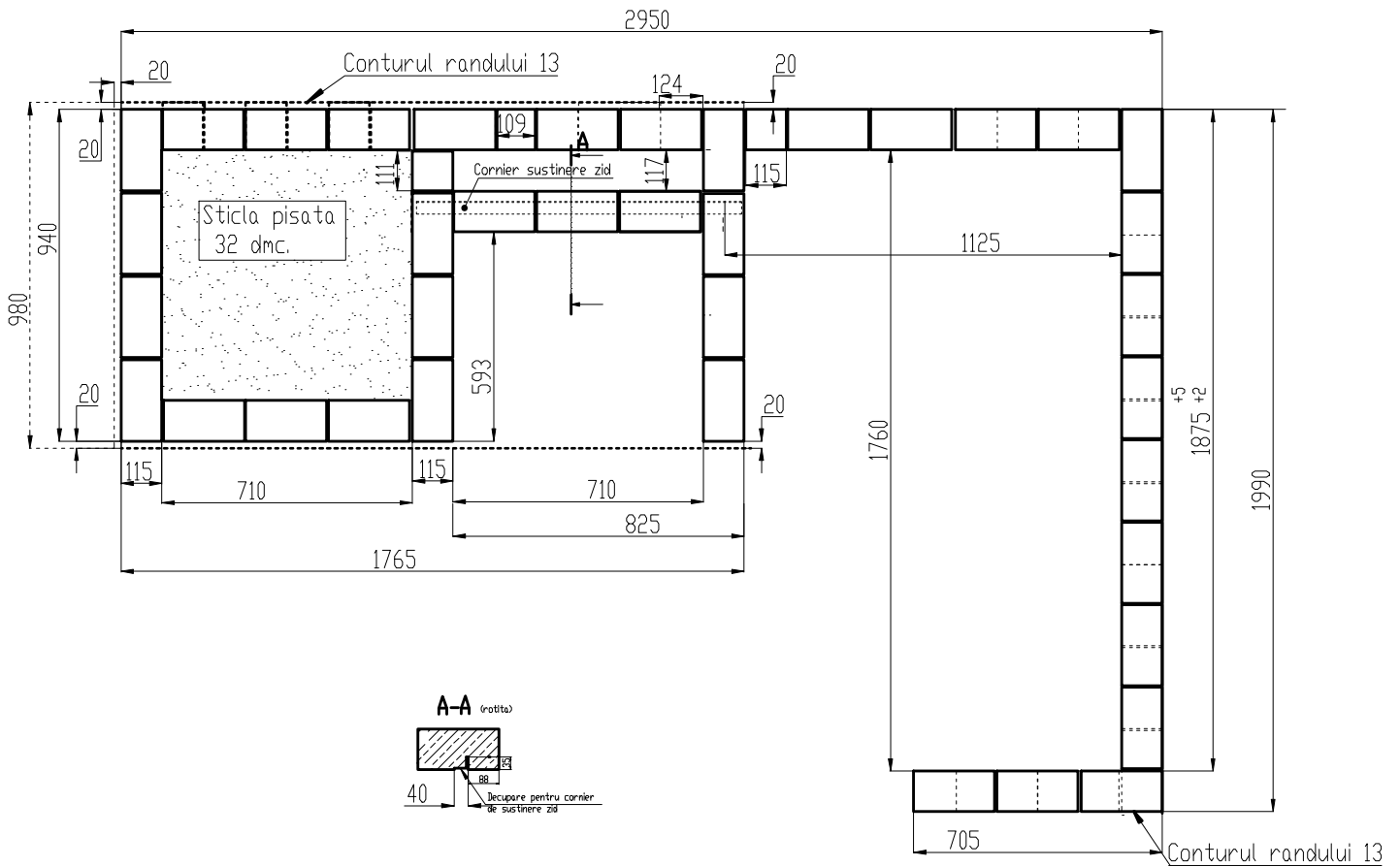
230

115</

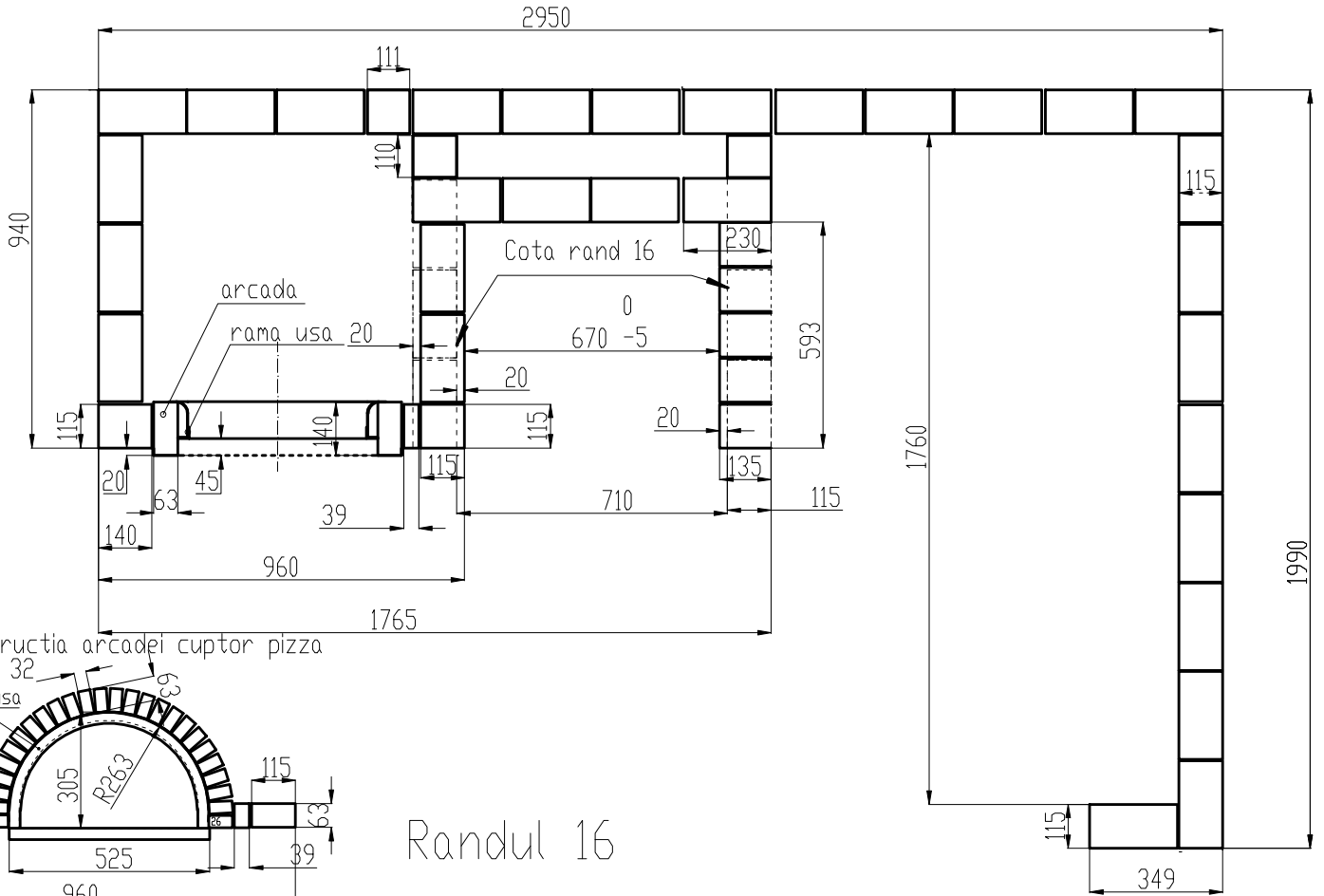
# Randul 15



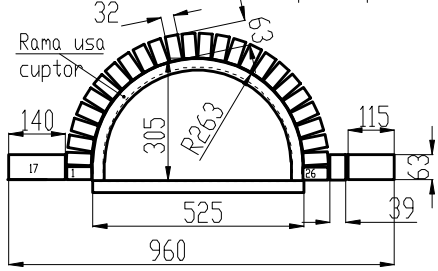
# Randul 14



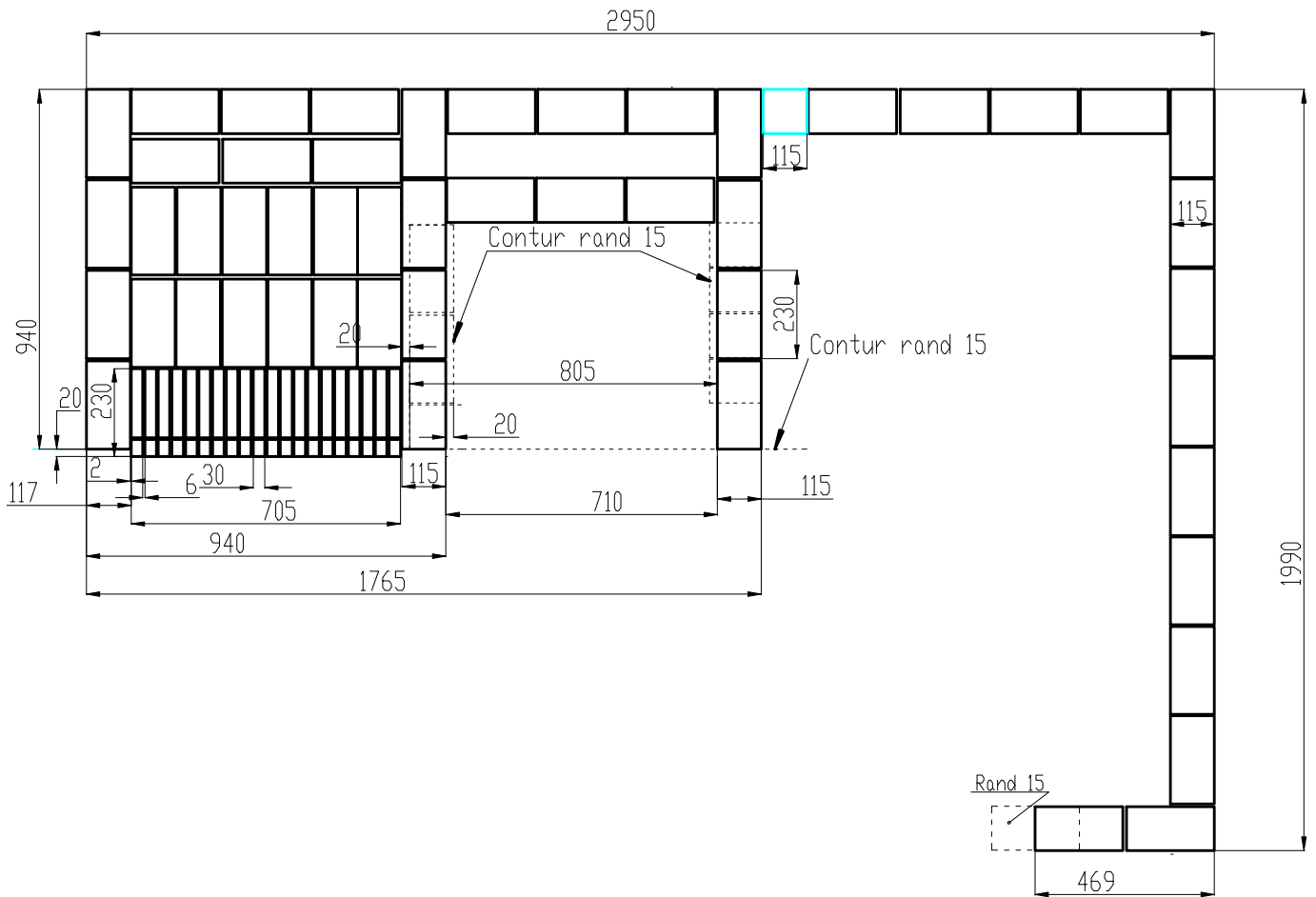
# Randul 17



## Constructia arcadei cuptor pizza

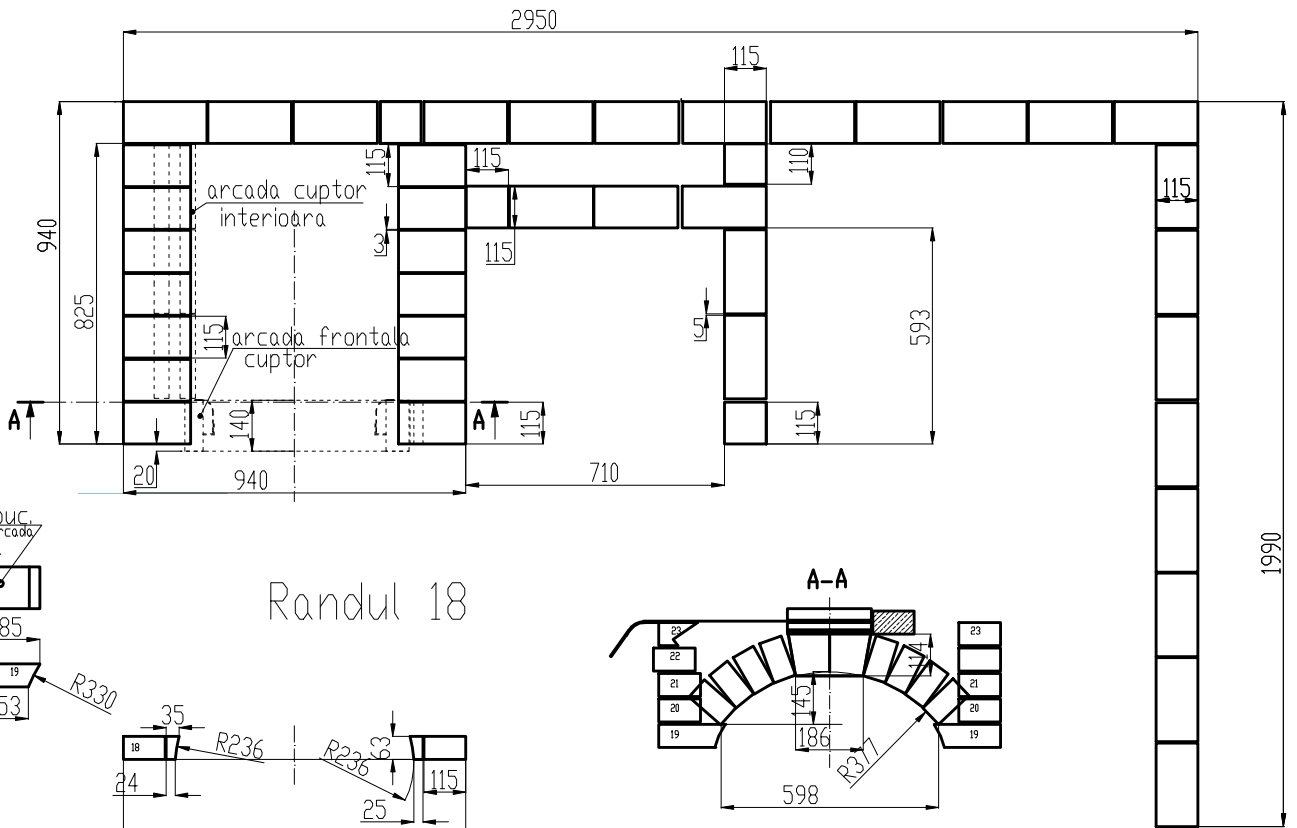


# Randul 16

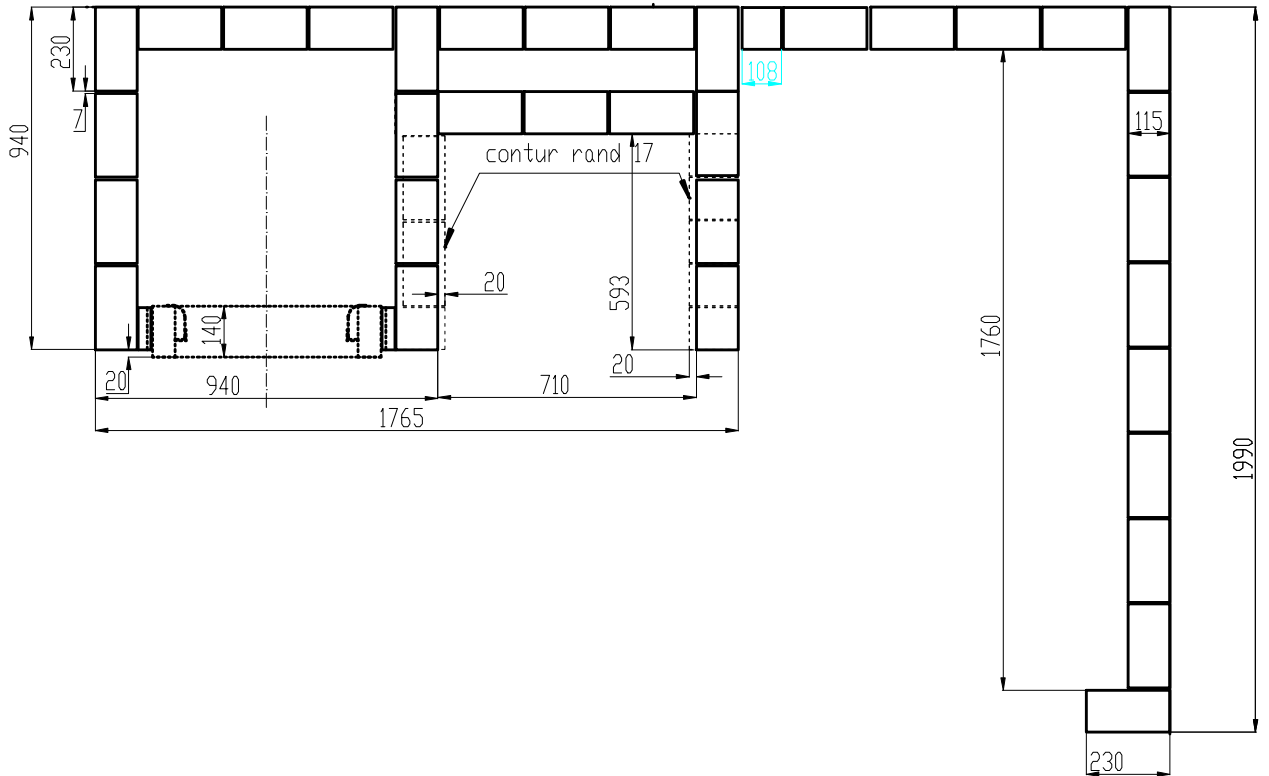
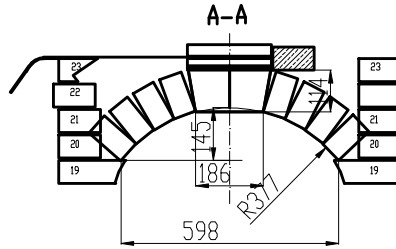
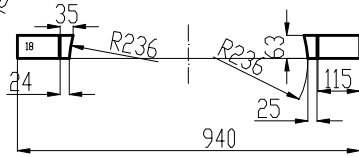
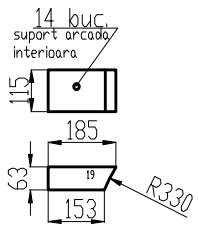




# Randul 19

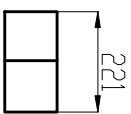


# Randul 18

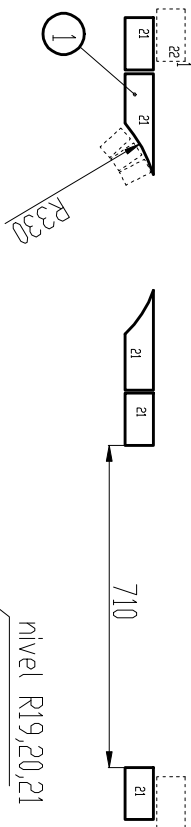




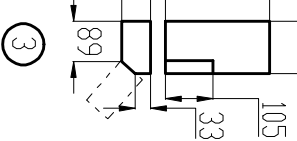
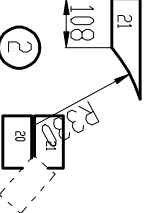
①  
2 buc.



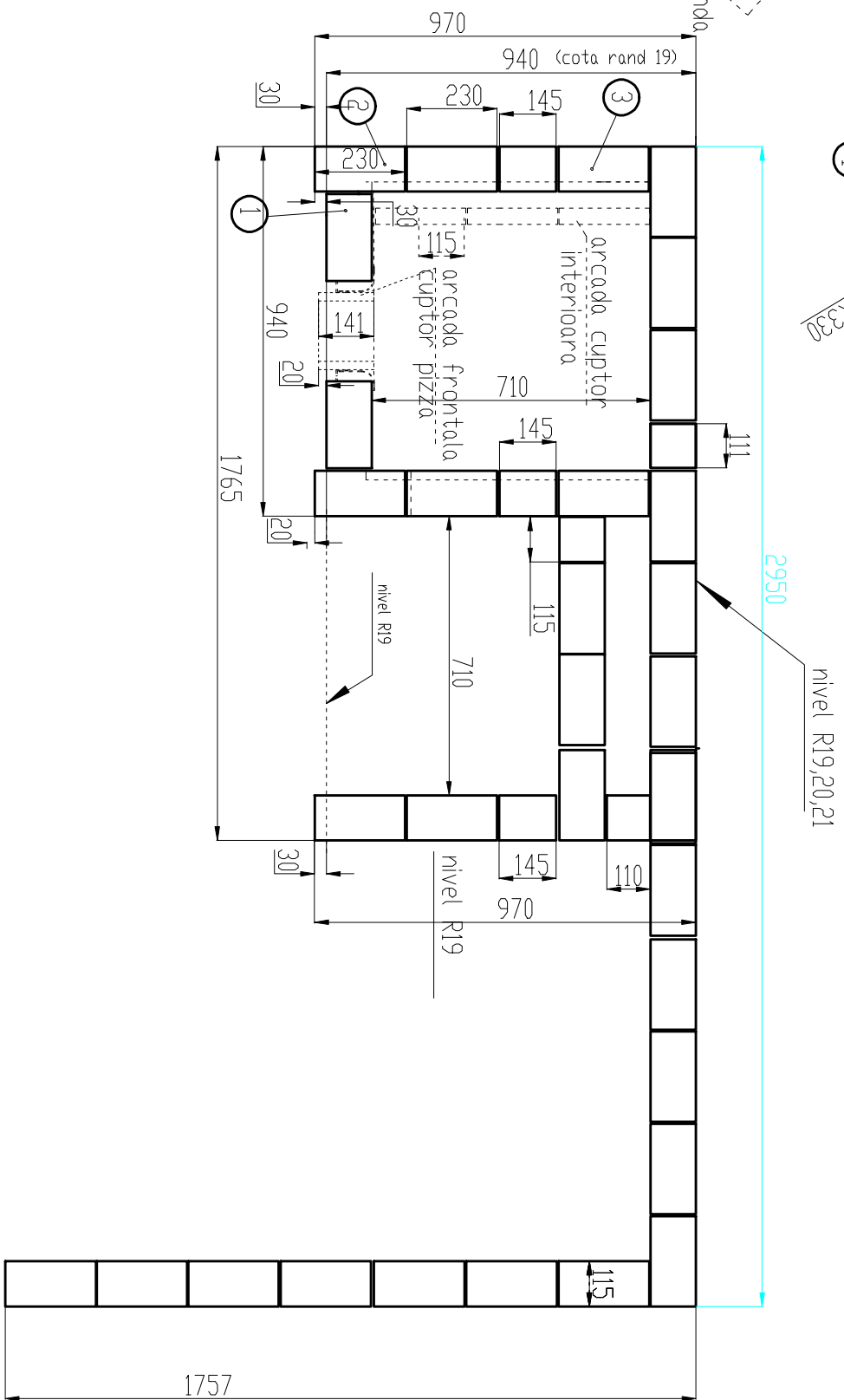
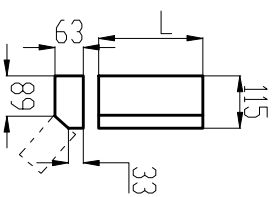
# Randul 21



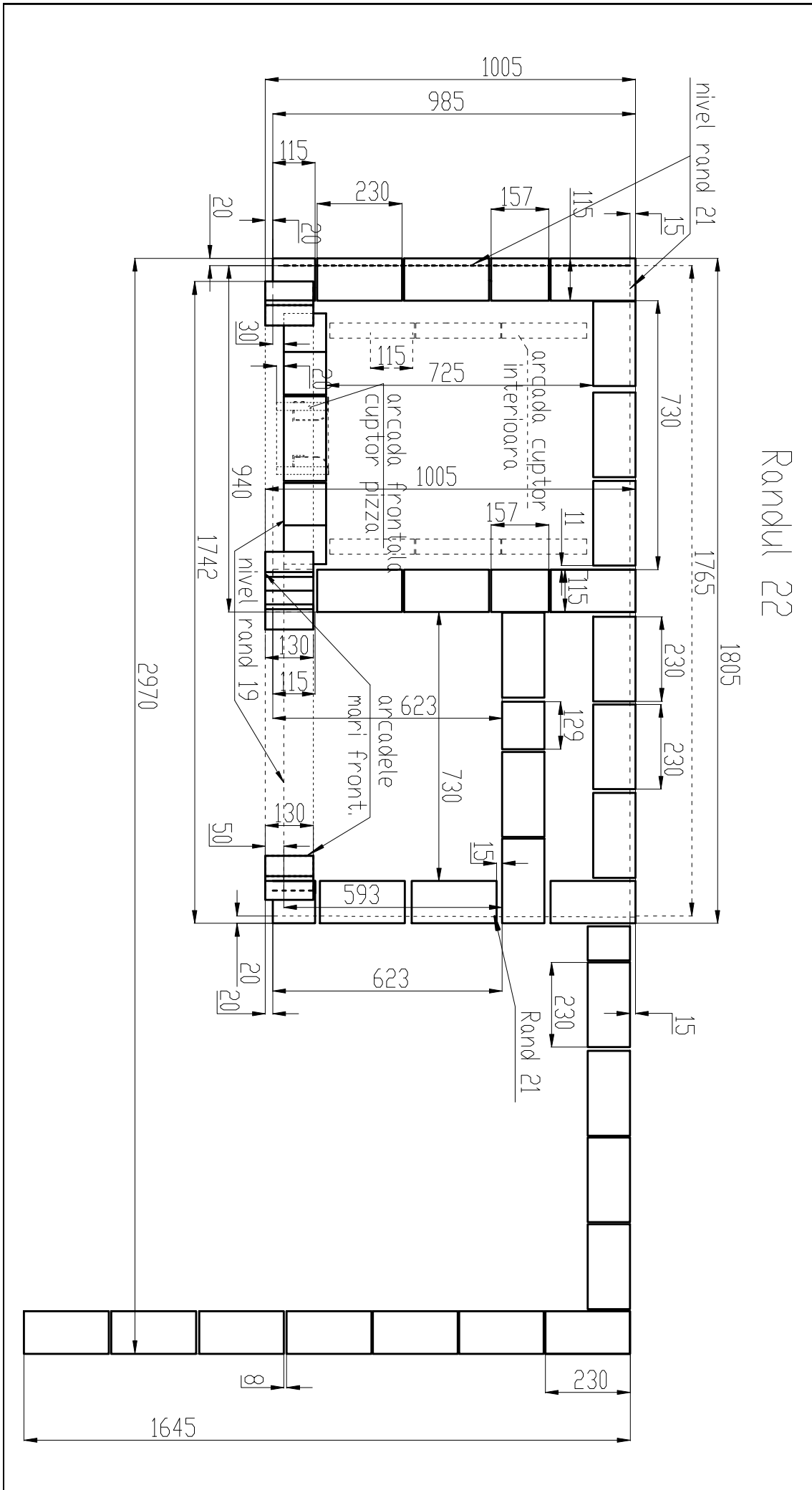
②  
2 buc. in oglinda



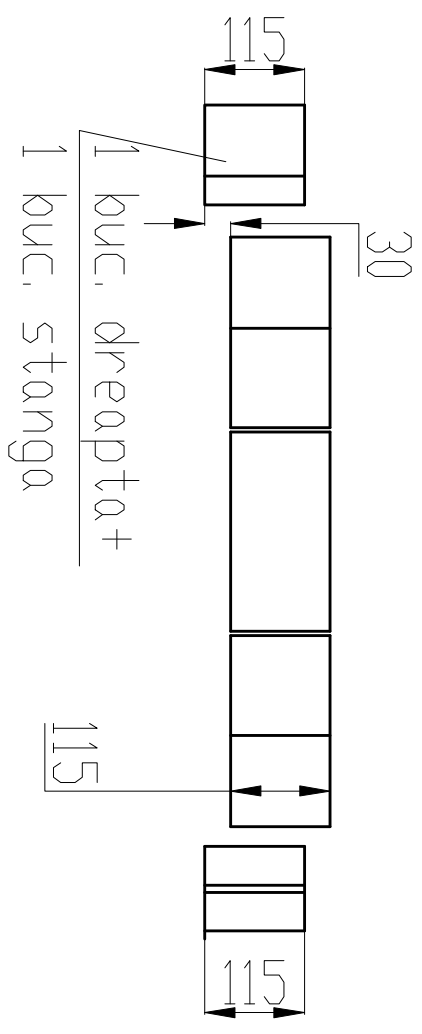
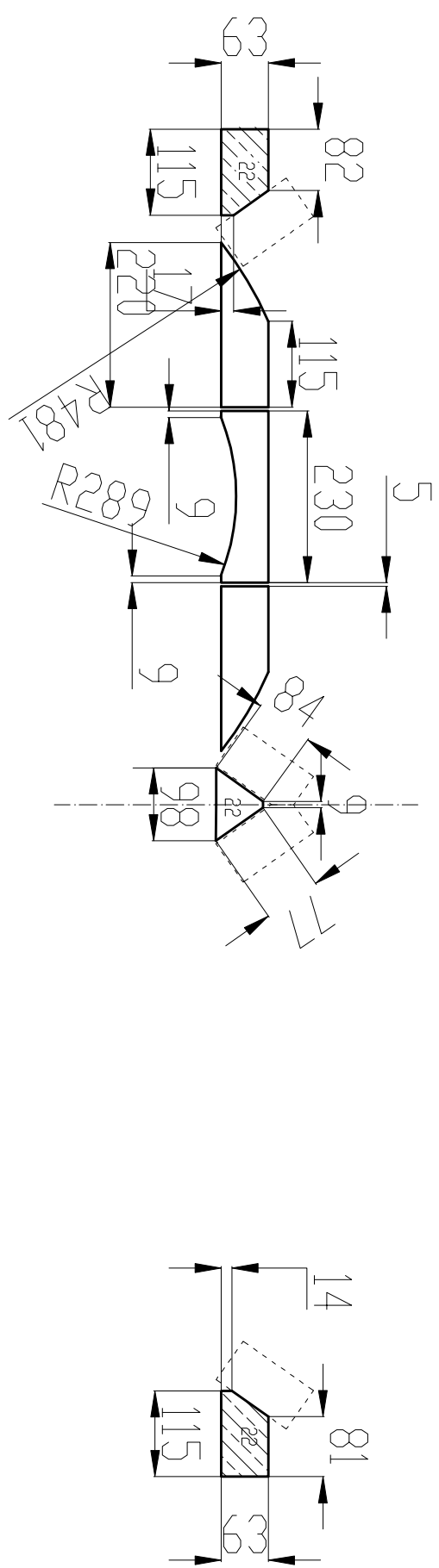
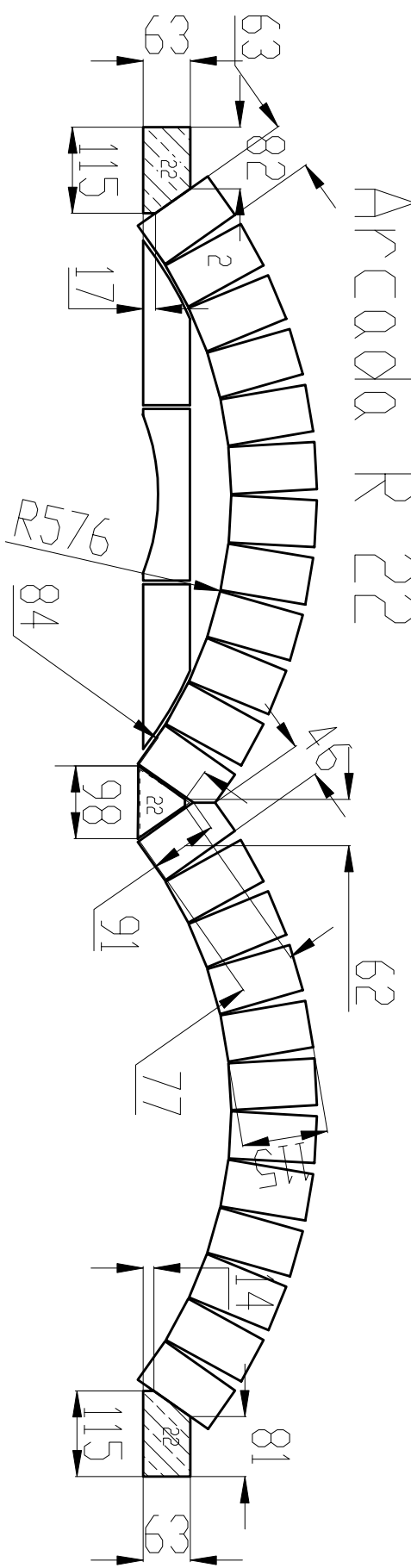
L=230 -6buc.  
L=145 -2buc.



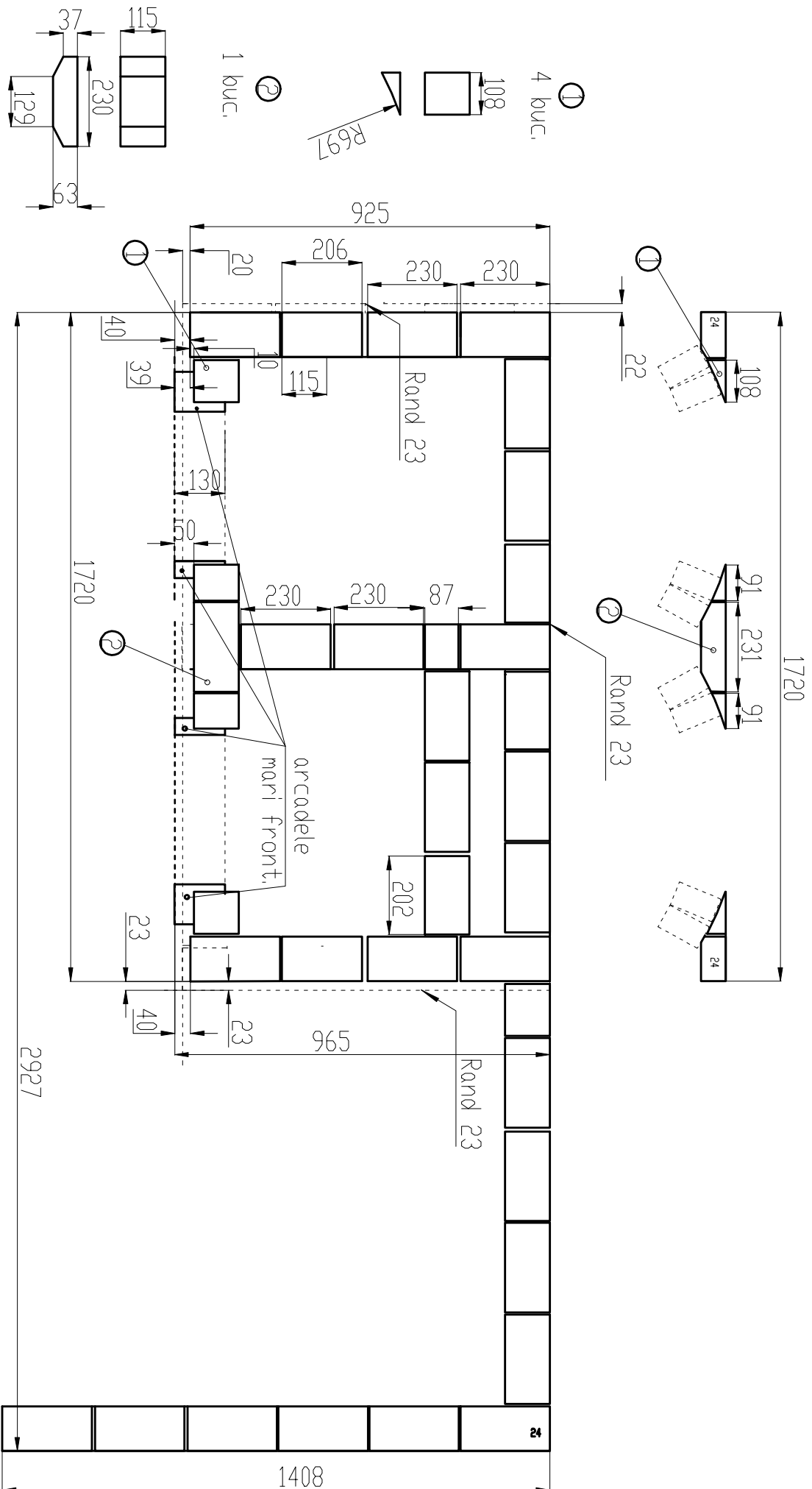
# Randul 22



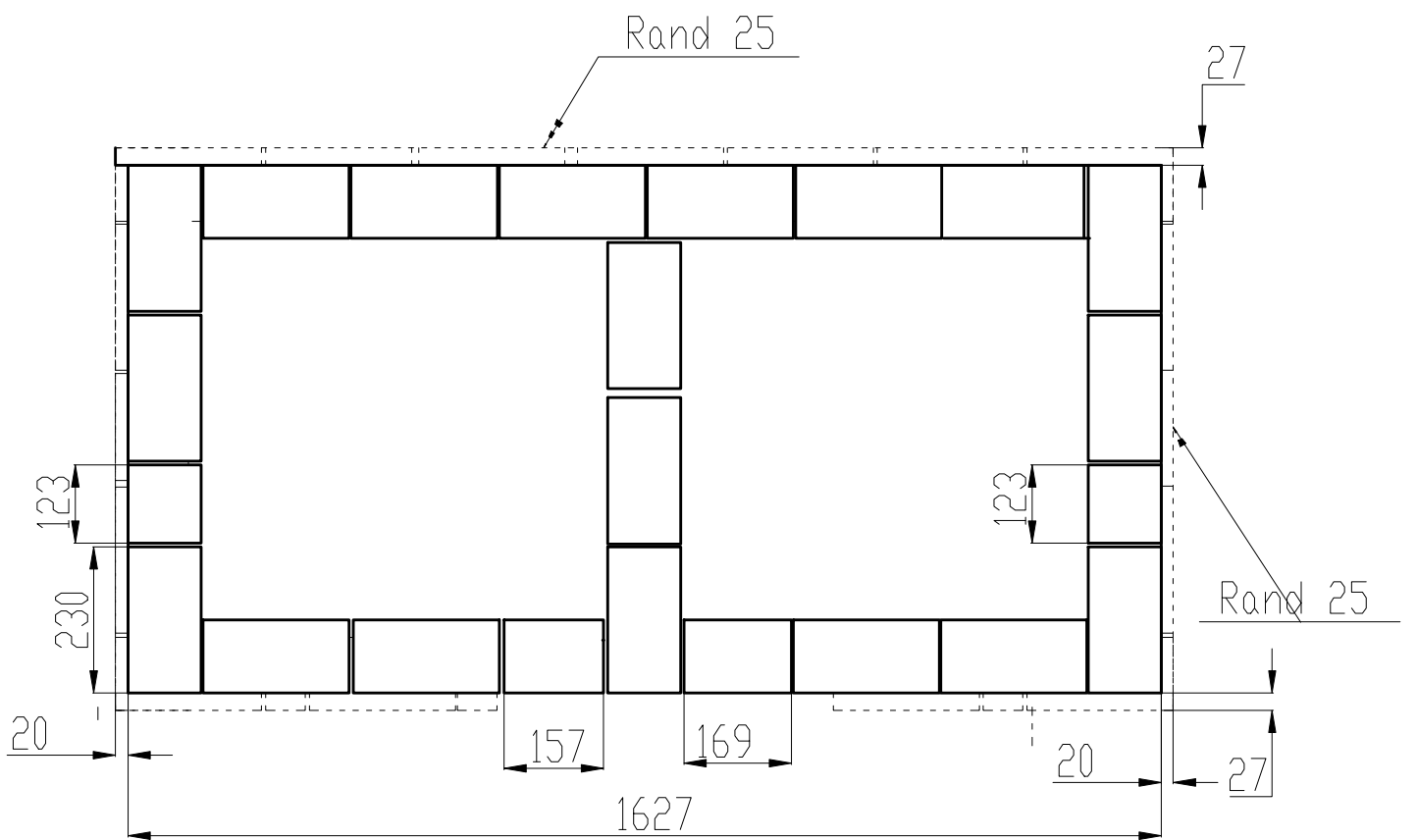
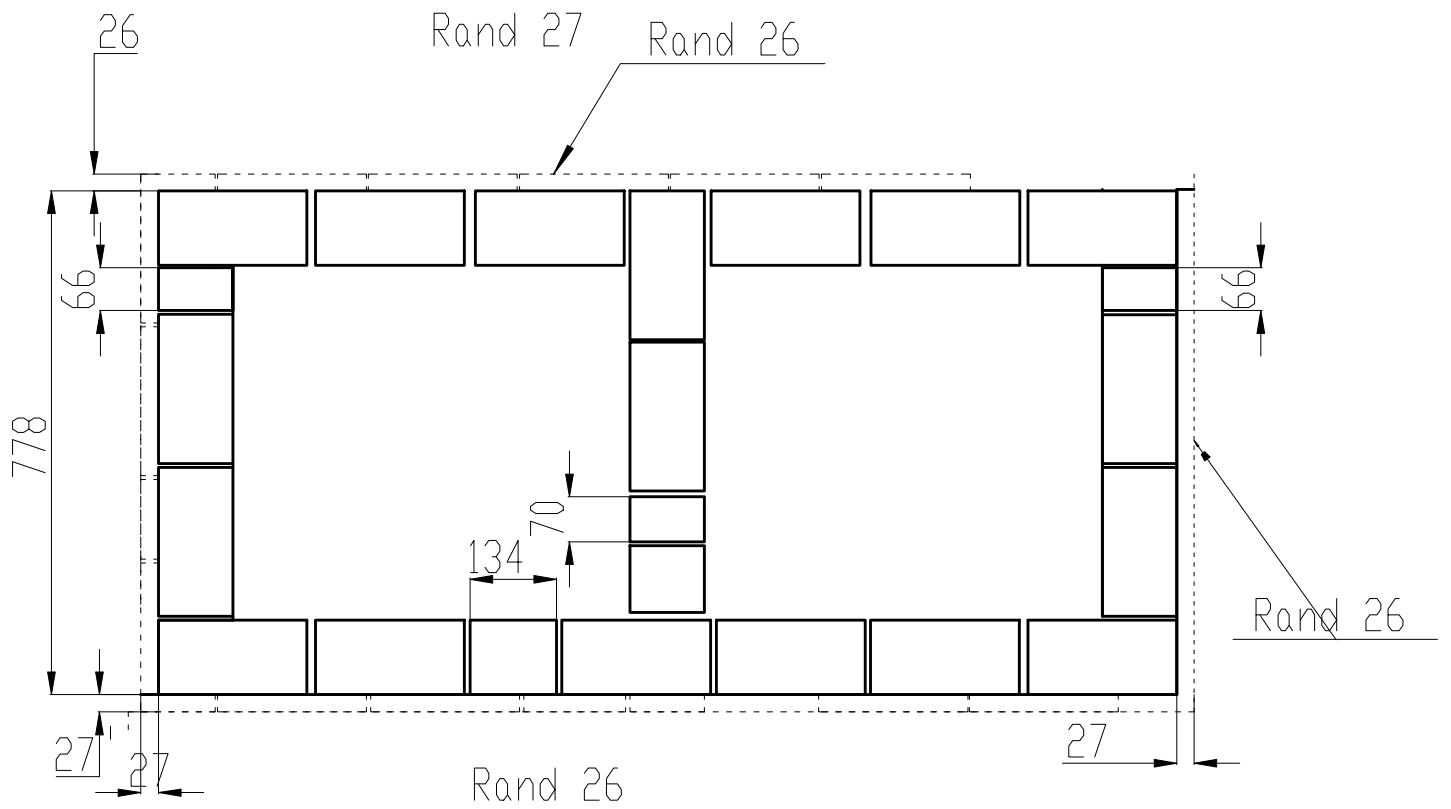
# ARCOADA R 22



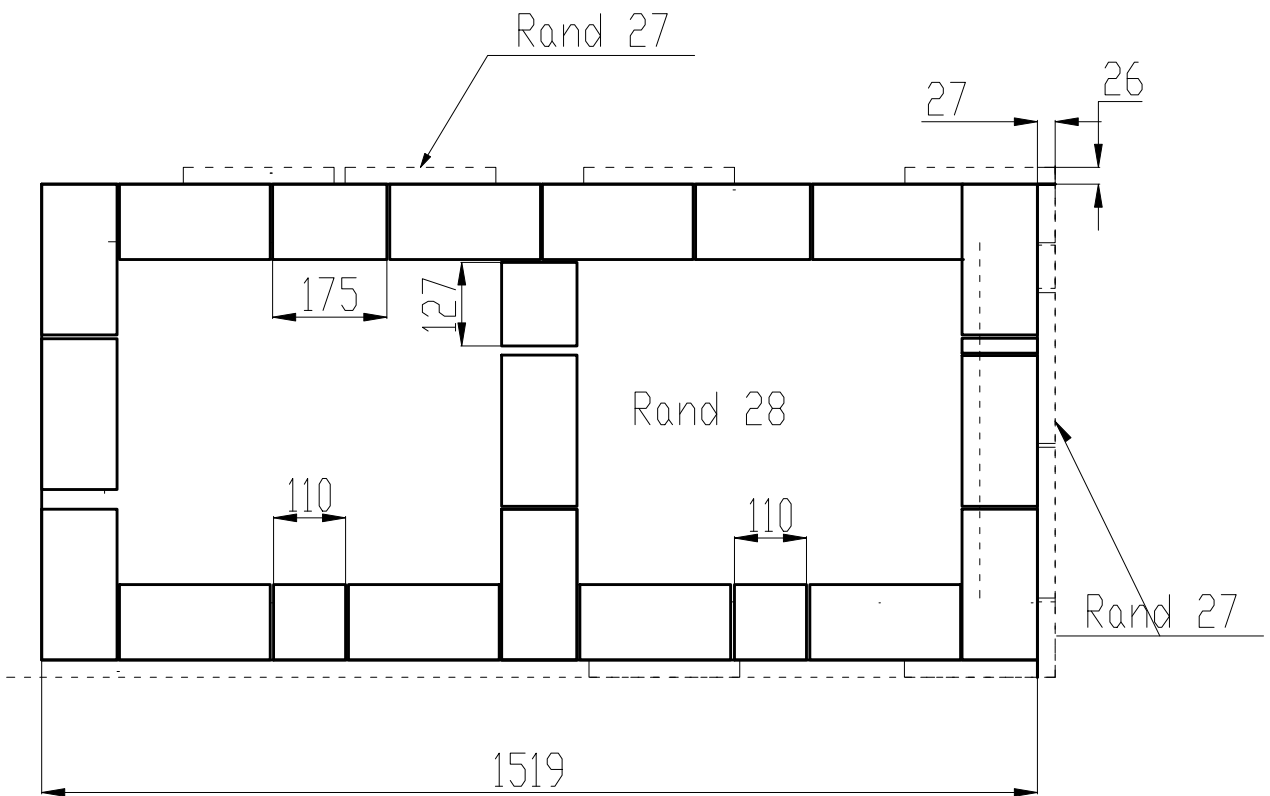
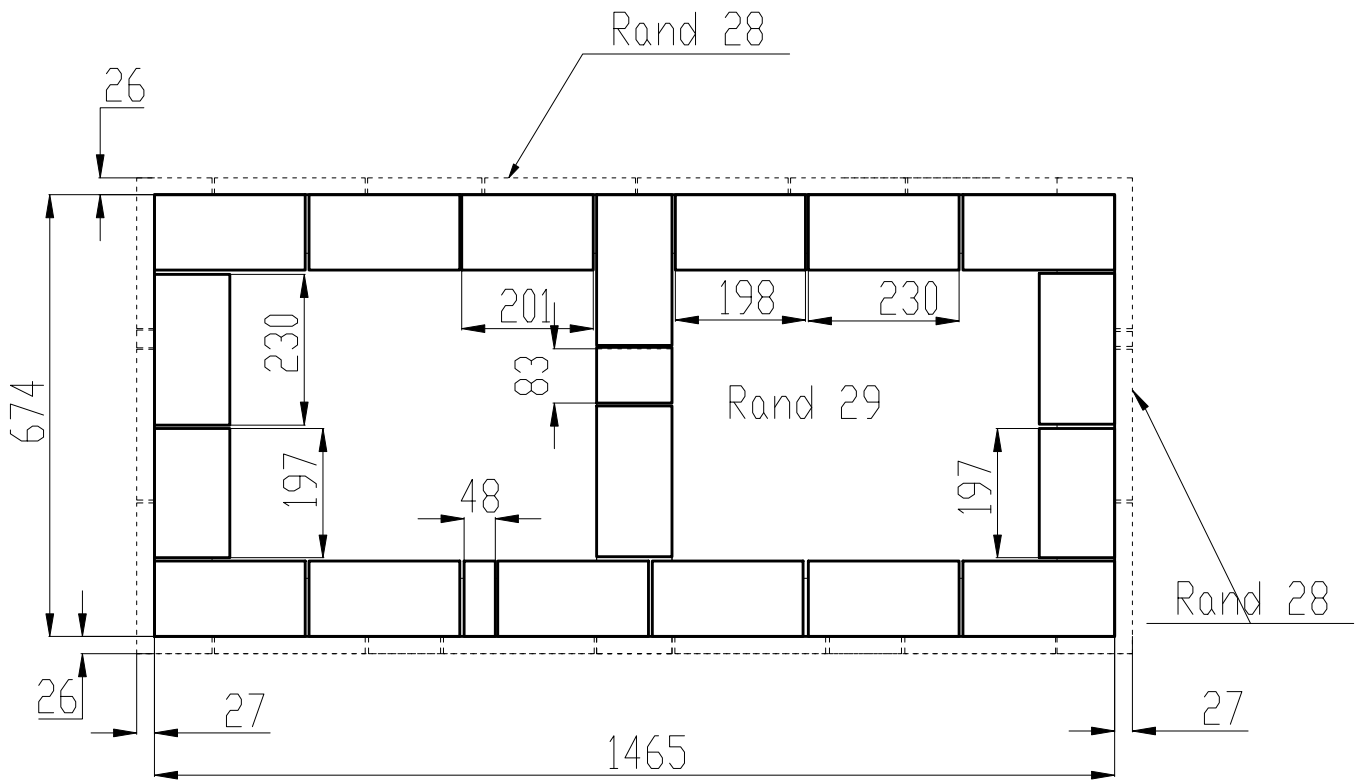
# Randul 24

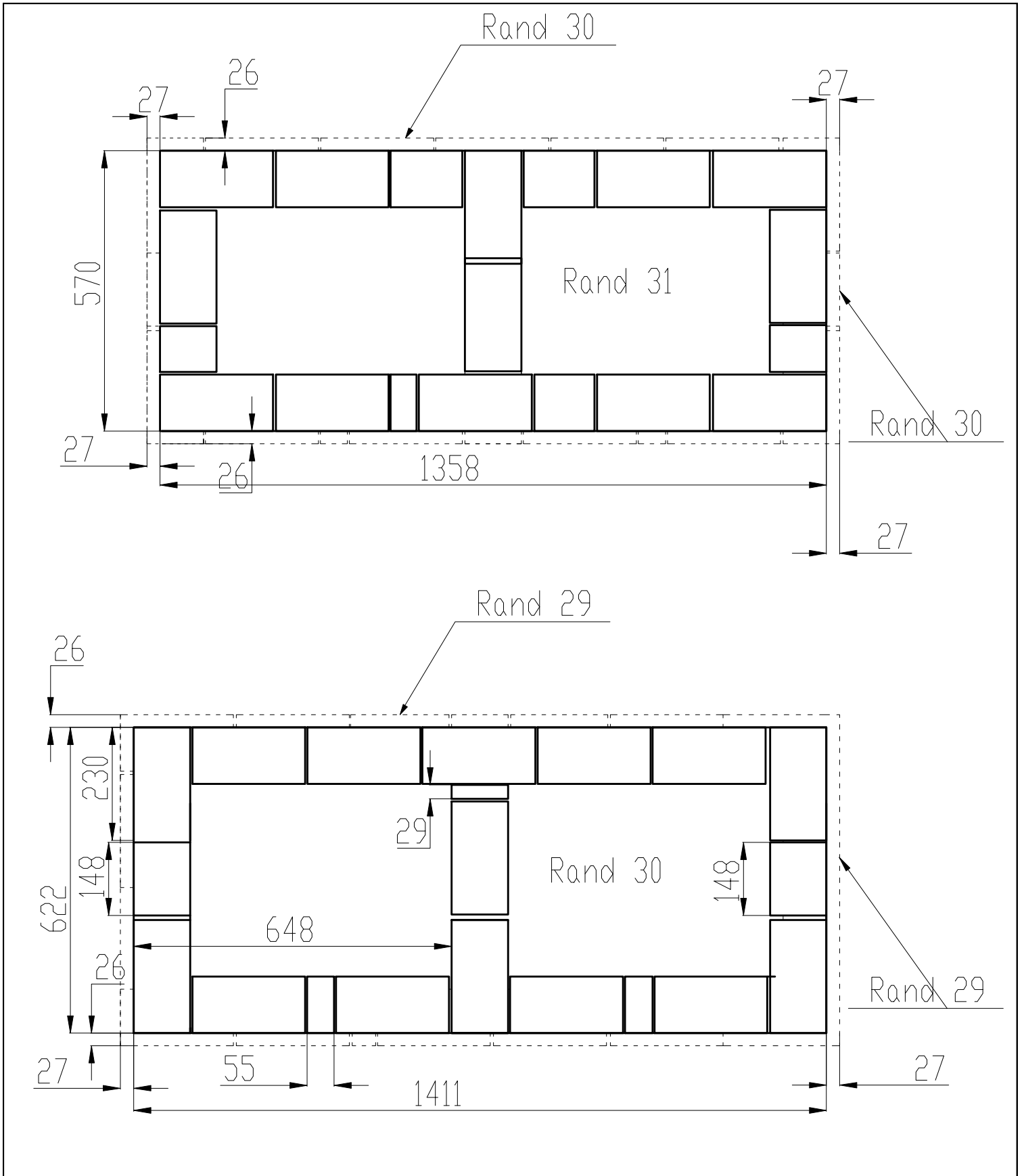


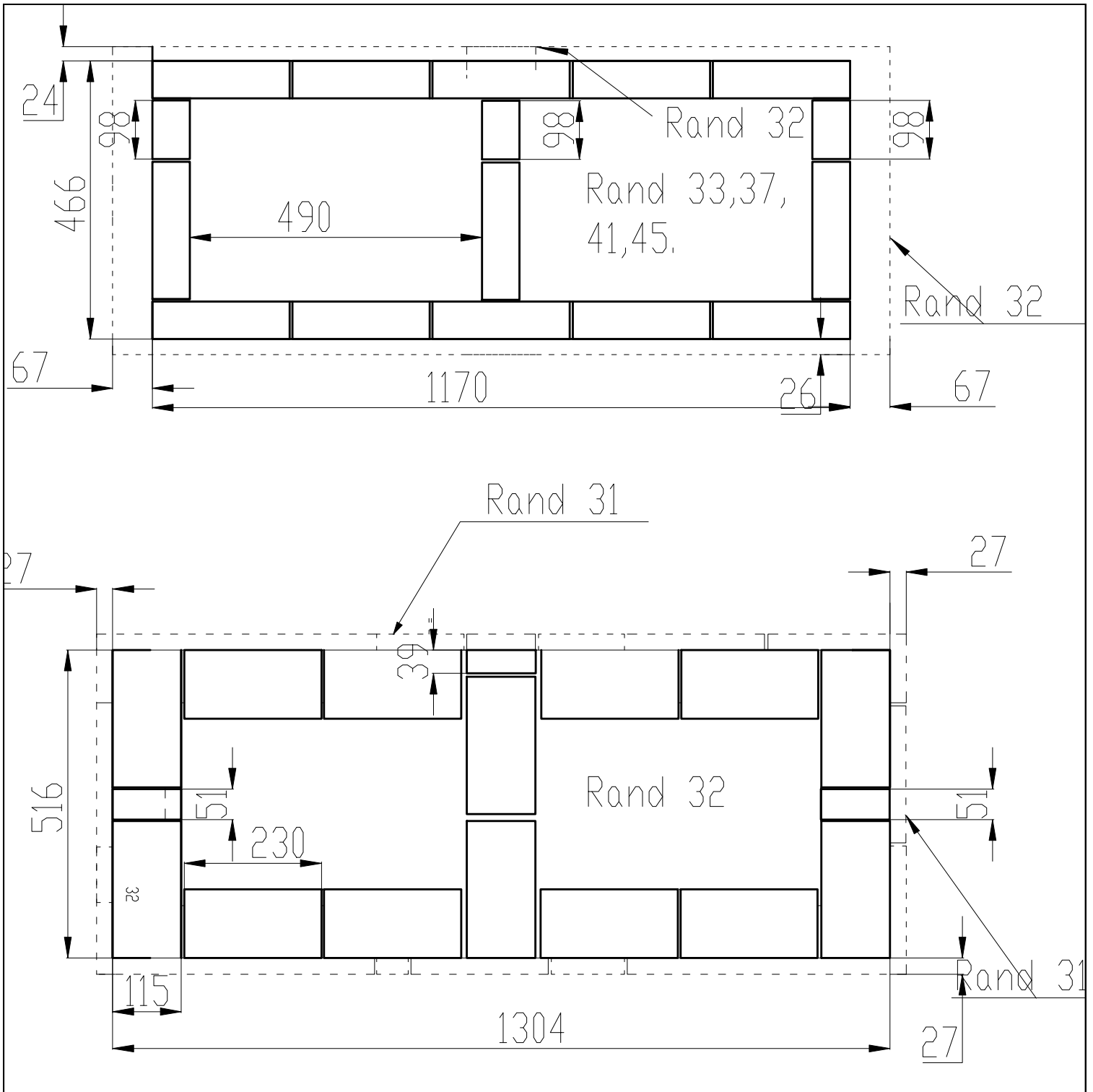


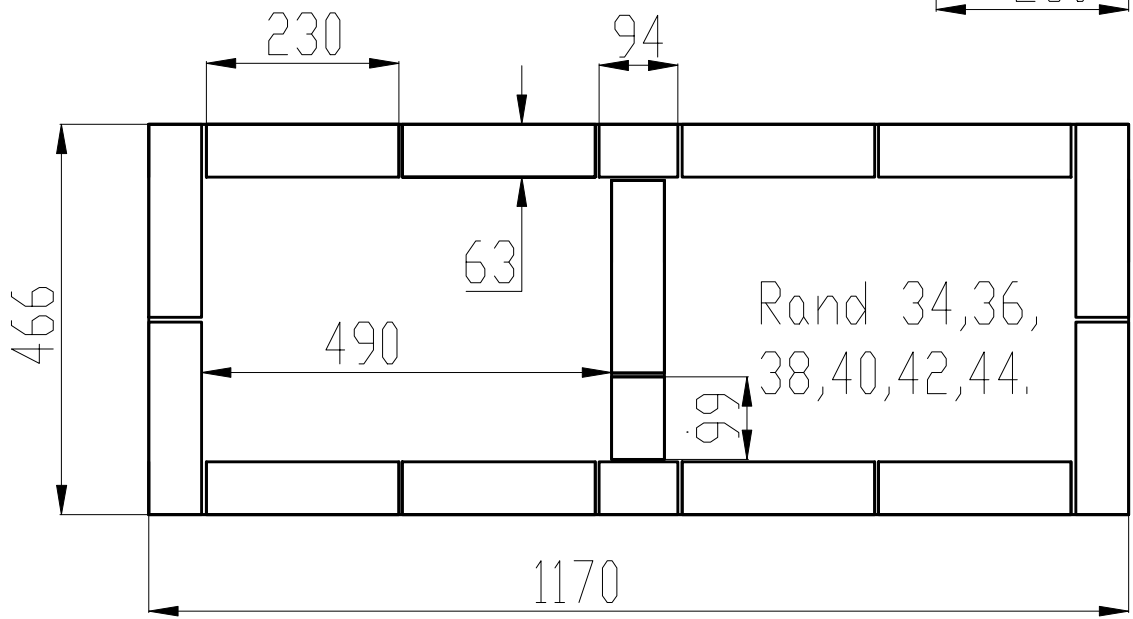
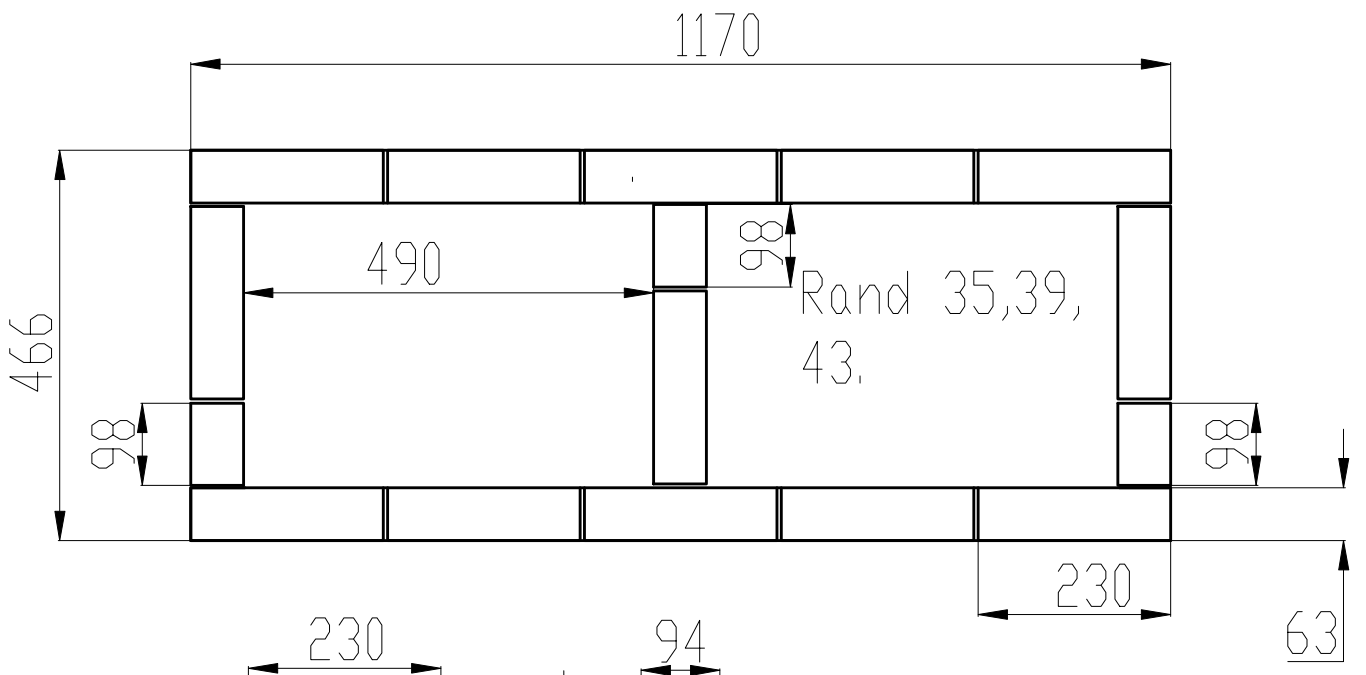
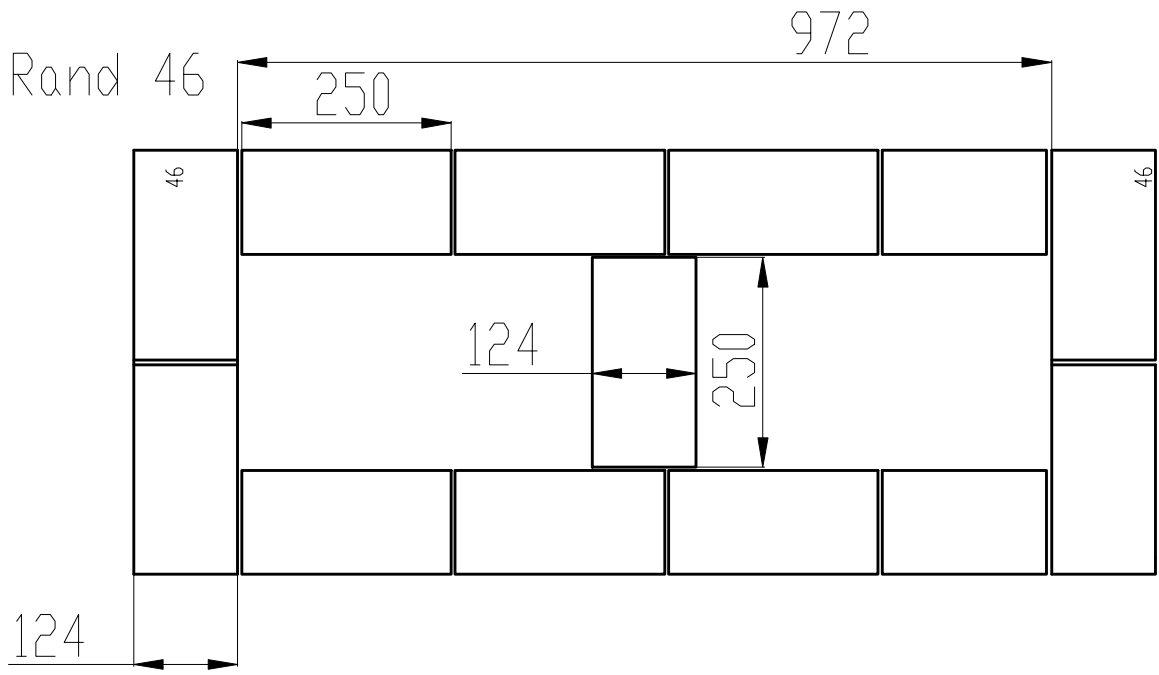












Lista de caramizi varianta 5  
Cuptor+grill+chiuveta

Caramizi P63 (230x115x63)

Nr. rand	Nr. caramizi
1	134
2	47
3	43
4	48
5	43
6	48
7	42
8	79
9	46
10	44
11	48
12	65
13	56
14	41
15	43
16	50
17	40
18	37
19	42
20	36
21	38
22	63
23	39
24	41
25	28
26	23
27	25
28	23
29	19
30	18
31	17
32	14
33	135
34	14
35	145
36	14
37	135
38	14
39	145
40	14
41	135
42	14
43	145
44	14
45	145

Total 1563 buc.

Caramizi R-28 AS

Nr. rand	Nr. caramizi
13	18
16	10
20	36

Total 64

Caramizi 2R-28 AS

Nr. rand	Nr. caramizi
46	13

Total 13 buc.

Caramizi R32-28 AS

Nr. rand	Nr. caramizi
17	26
20	4
Total	30 buc.